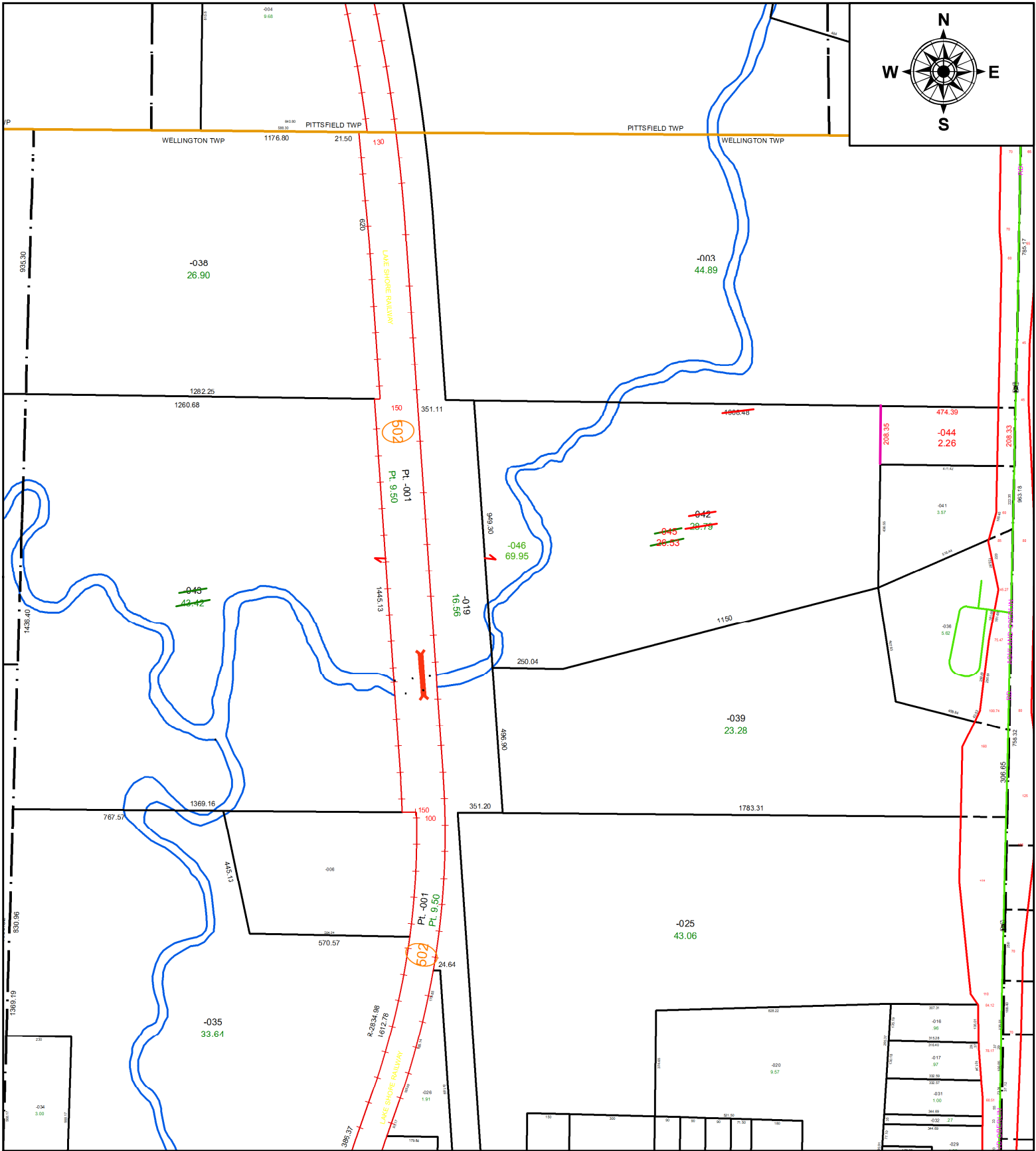
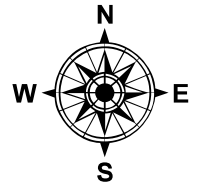


PARENT PARCEL: 18-00-030-000-042, -043

CHILD PARCEL: 18-00-030-000-044 THRU -046

STARTING POINT: INTERSECTION OF C/L OF S.R. 58 AND C/L OF WEBSTER RD.

20-04210



SPLITS/DEEDS PROCESSED
LORAIN COUNTY TAX MAP DEPARTMENT
226 MIDDLE AVE. ELYRIA, OH

SURVEYED BY: TIMOTHY D. HOZALSKI

CLOSURE: 1:193,656

MAP PAGE(S): 18-00-030

APPROVED BY: RRM DATE: 11-9-20

SCALE: 1" = 450 PRIOR INSTRUMENT: 20000698570