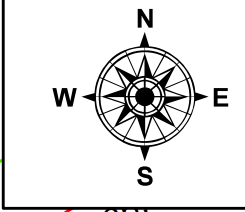
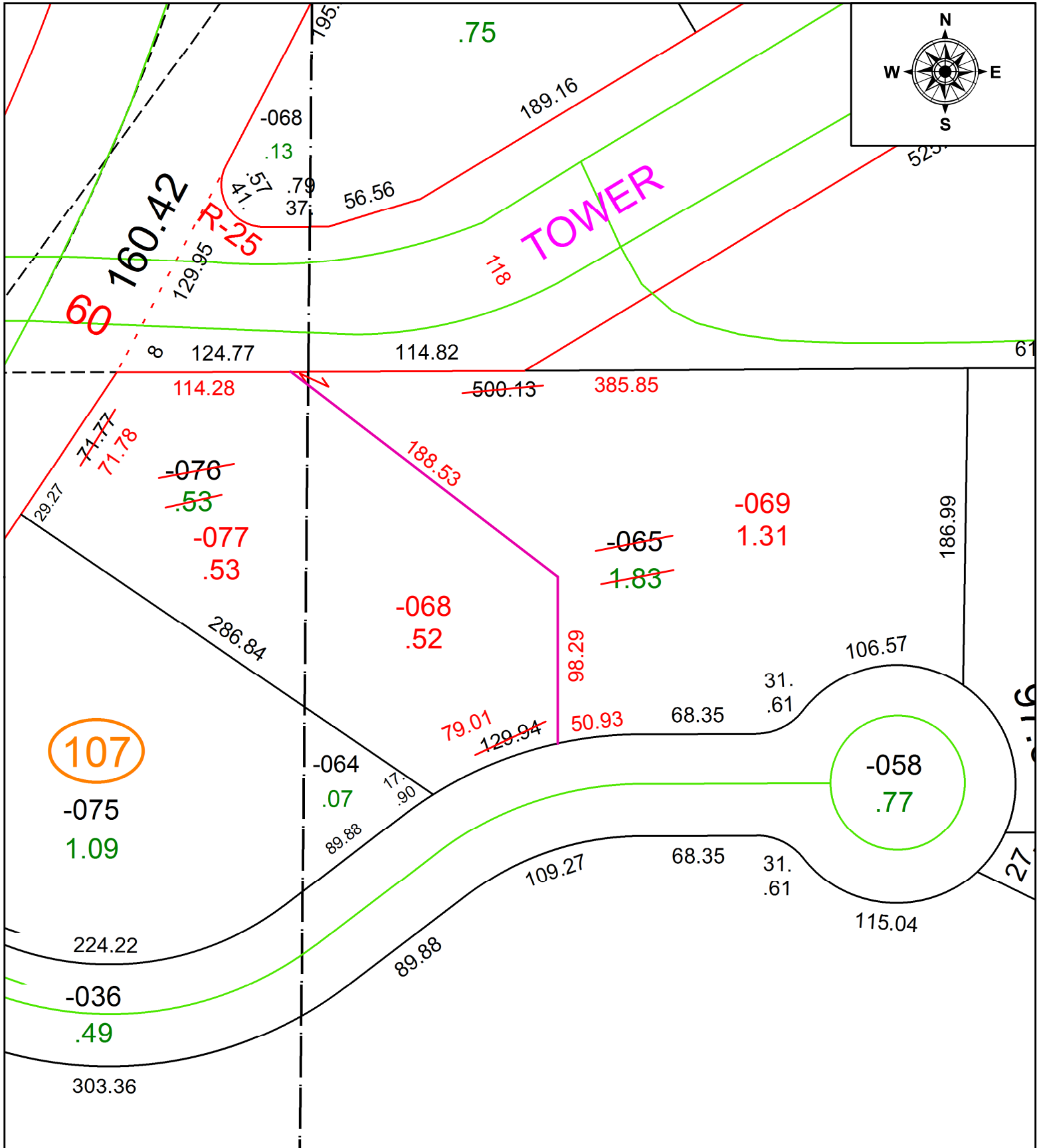


PARENT PARCEL: 02-02-007-101-065, 02-02-008-107-076

CHILD PARCEL: 02-02-007-101-068, -069, 02-02-008-107-077

STARTING POINT: INTERSECTION OF C/L OF LEAVITT RD. AND SOUTH LINE OF O.L.8 TR.2

20-04208



SPLITS/DEEDS PROCESSED
 LORAIN COUNTY TAX MAP DEPARTMENT
 226 MIDDLE AVE. ELYRIA, OH

SURVEYED BY: GARY S. SWIERZ
 CLOSURE: 1:83,846
 MAP PAGE(S): 2-02-007
 APPROVED BY: RRM DATE: 11-5-20
 SCALE: 1" = 75' PRIOR INSTRUMENT: 20200746324