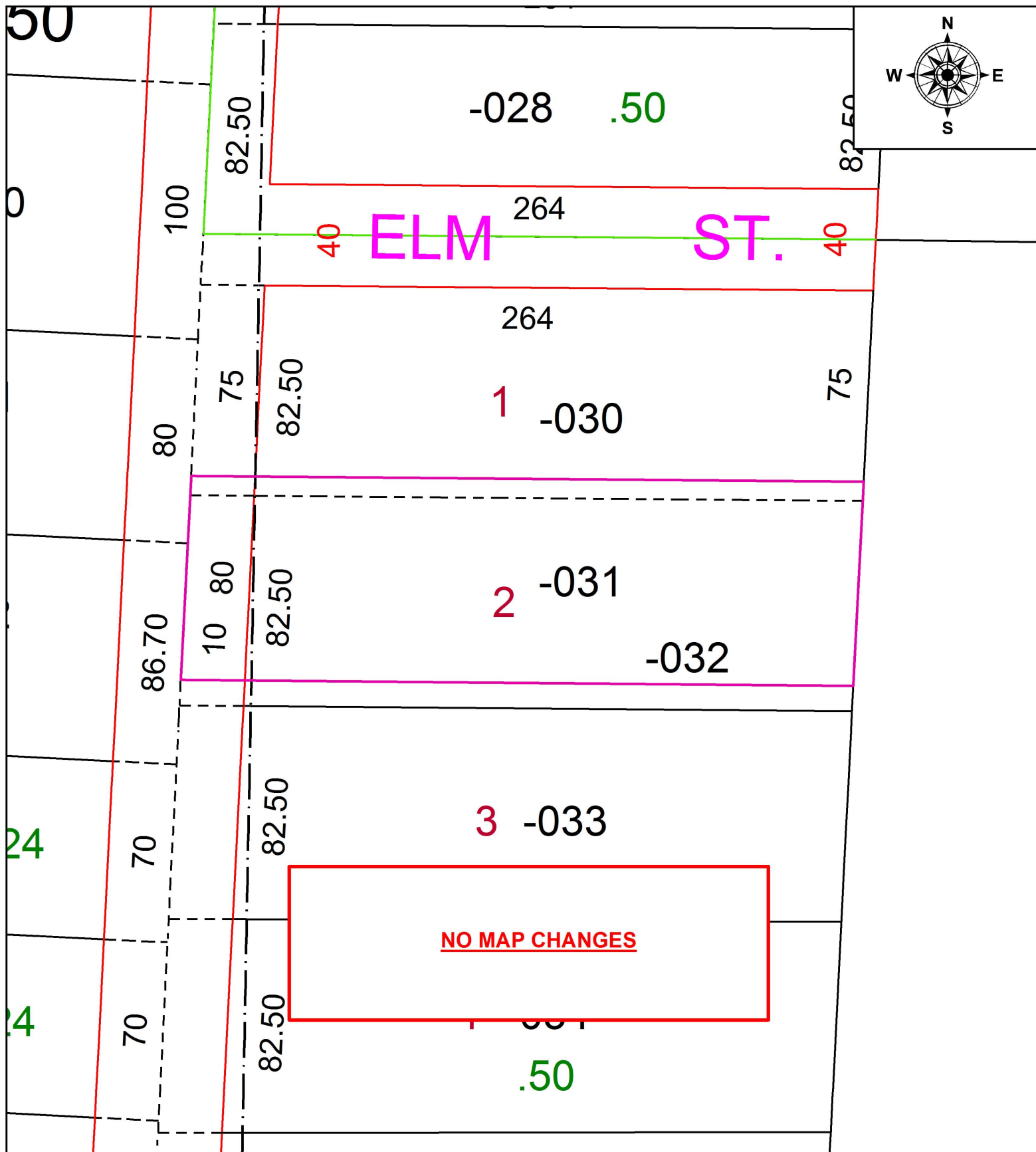


PARENT PARCEL: 05-00-011-103-031

CHILD PARCEL:

STARTING POINT: INTERSECTION OF C/L OF S. LAKE ST. AND NORTH LINE OF S/L 1 IN JACKSON'S SUB.

19-04207-C



SPLITS/DEEDS PROCESSED
 LORAIN COUNTY TAX MAP DEPARTMENT
 226 MIDDLE AVE. ELYRIA, OH

SURVEYED BY: RICHARD A. ROSEBECK

CLOSURE: 1: 21,899

MAP PAGE(S): 5-00-011

APPROVED BY: RRM DATE: 10-17-19

SCALE: 1" = 50 PRIOR INSTRUMENT: 20090306797