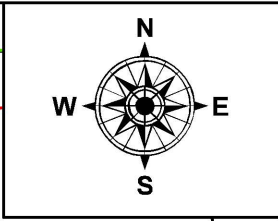
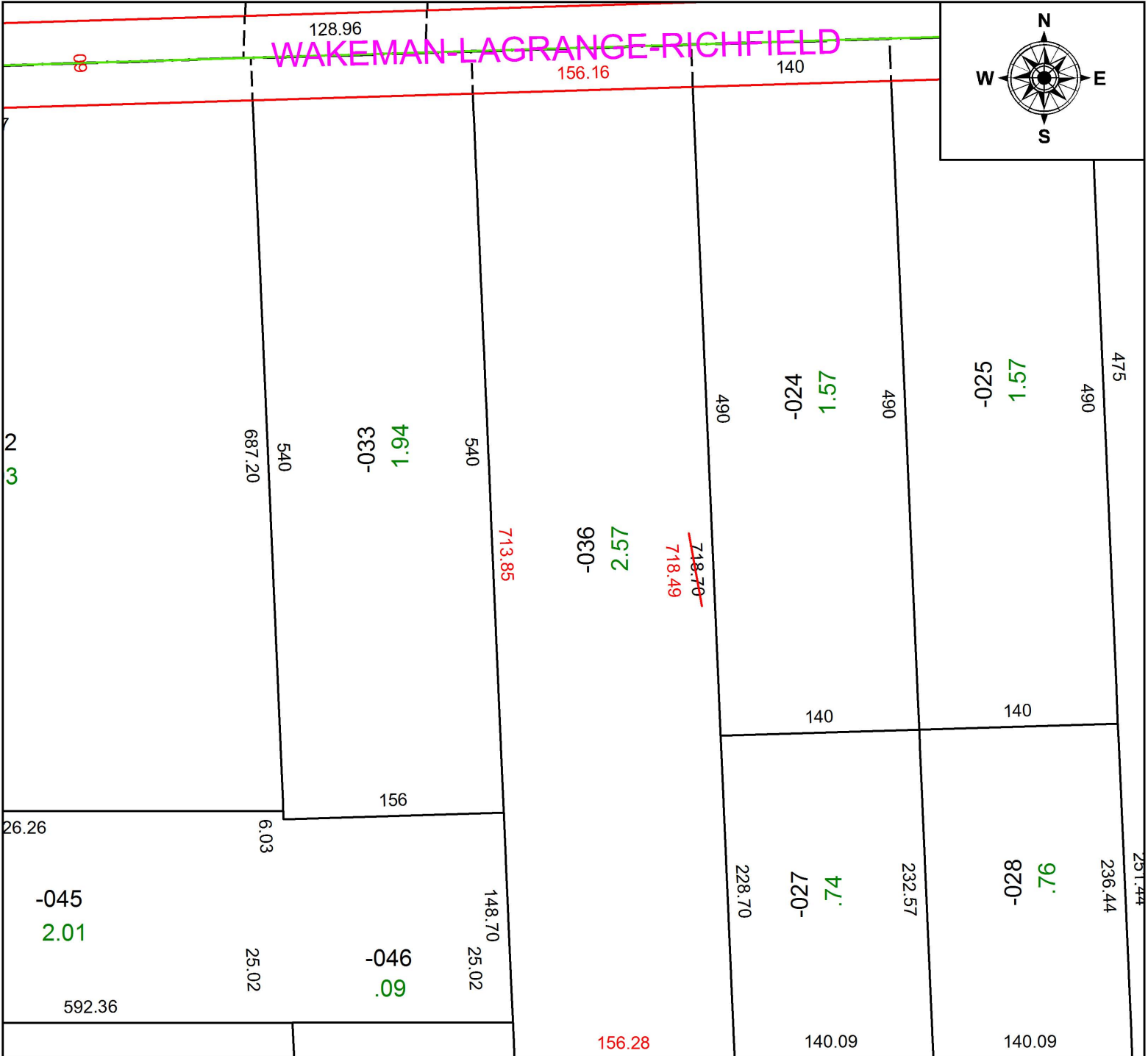


PARENT PARCEL: 14-00-085-000-036

CHILD PARCEL:

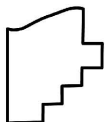
STARTING POINT: INTERSECTION OF C/L OF S.R. 58 AND C/L OF S.R. 303

19-04202-C



594.02 1454.10

MAP CORRECTION ONLY



SPLITS/DEEDS PROCESSED
 LORAIN COUNTY TAX MAP DEPARTMENT
 226 MIDDLE AVE. ELYRIA, OH

SURVEYED BY: WILFREDO BARBOSA
 CLOSURE: 1:220,793
 MAP PAGE(S): 14-00-085
 APPROVED BY: RRM DATE: 10-9-19
 SCALE: 1" = 100 PRIOR INSTRUMENT: 20130482191