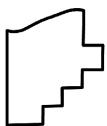
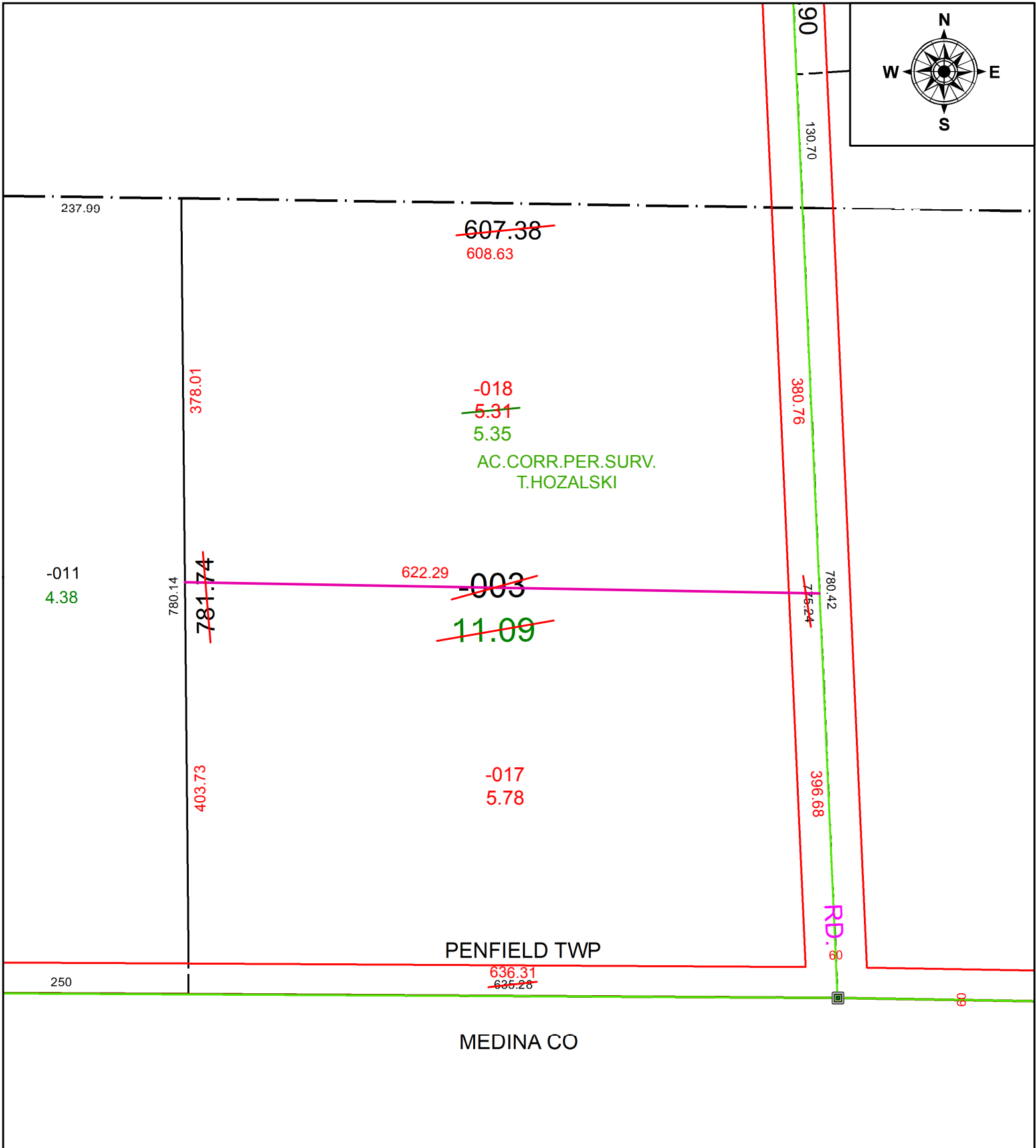


PARENT PARCEL: 19-01-024-000-003

CHILD PARCEL: 19-01-024-000-017, -018

STARTING POINT: INTERSECTION OF C/L OF S.R. 301 AND C/L OF SMITH RD.

20-04201



**SPLITS/DEEDS PROCESSED**  
 LORAIN COUNTY TAX MAP DEPARTMENT  
 226 MIDDLE AVE. ELYRIA, OH

SURVEYED BY: TIMOTHY D. HOZALSKI

CLOSURE: 1:290,669

MAP PAGE(S): 19-01-024

APPROVED BY: RRM DATE: 10-28-20

SCALE: 1" = 125 PRIOR INSTRUMENT: 20190714085