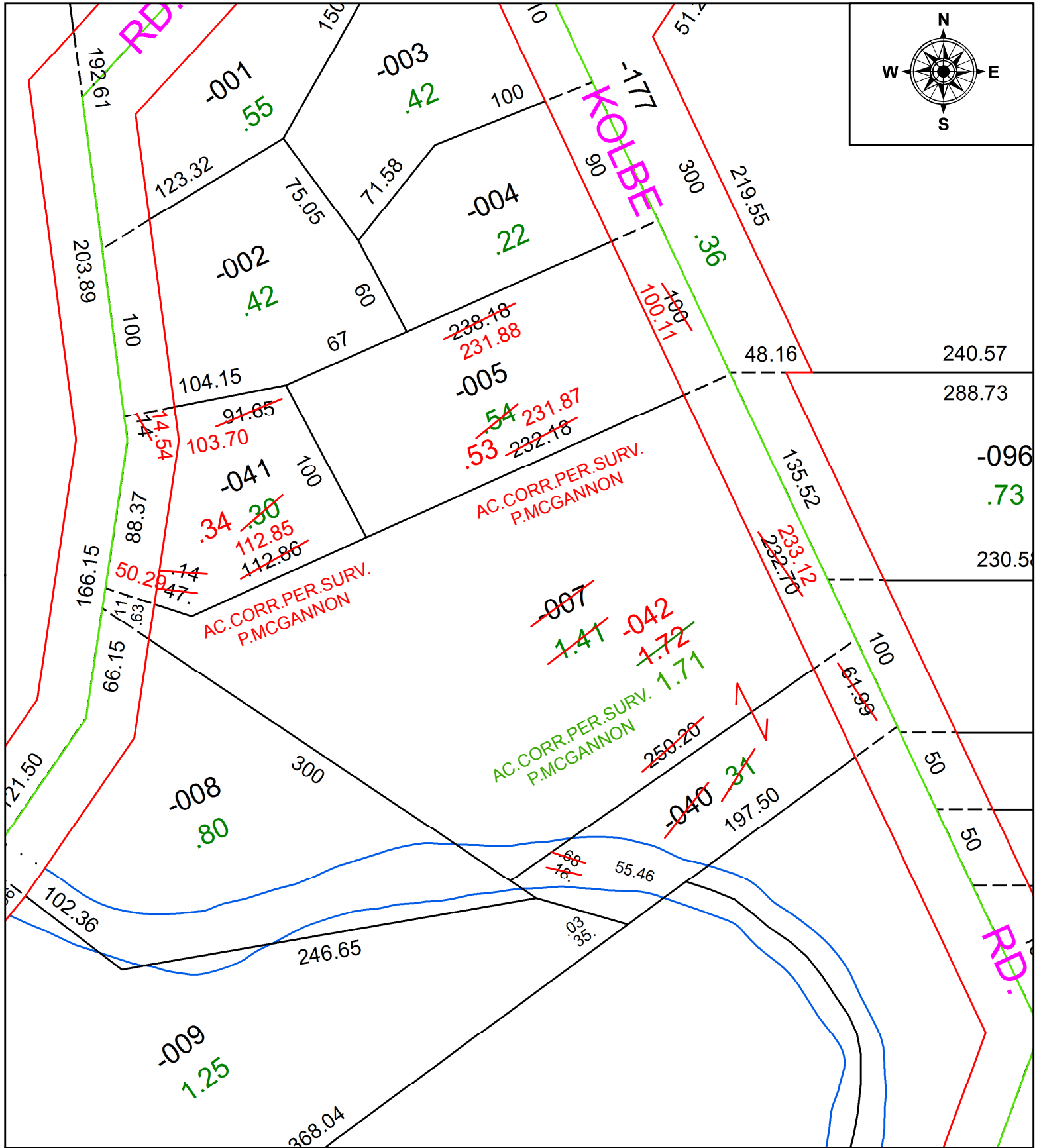
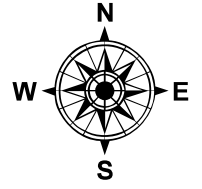


PARENT PARCEL: 05-00-021-102-005, -007, -040, -041

CHILD PARCEL: 05-00-021-102-005, -041, -042

STARTING POINT: INTERSECTION OF COOPER FOSTER PARK RD. AND C/L OF N. MAIN ST.

20-04198



SPLITS/DEEDS PROCESSED
LORAIN COUNTY TAX MAP DEPARTMENT
226 MIDDLE AVE. ELYRIA, OH

SURVEYED BY: PATRICK A. MCGANNON

CLOSURE: 1:253,331

MAP PAGE(S): 5-00-021

APPROVED BY: RRM DATE: 10-22-20

SCALE: 1" = 75 PRIOR INSTRUMENT: 2016060039