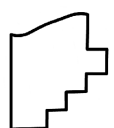
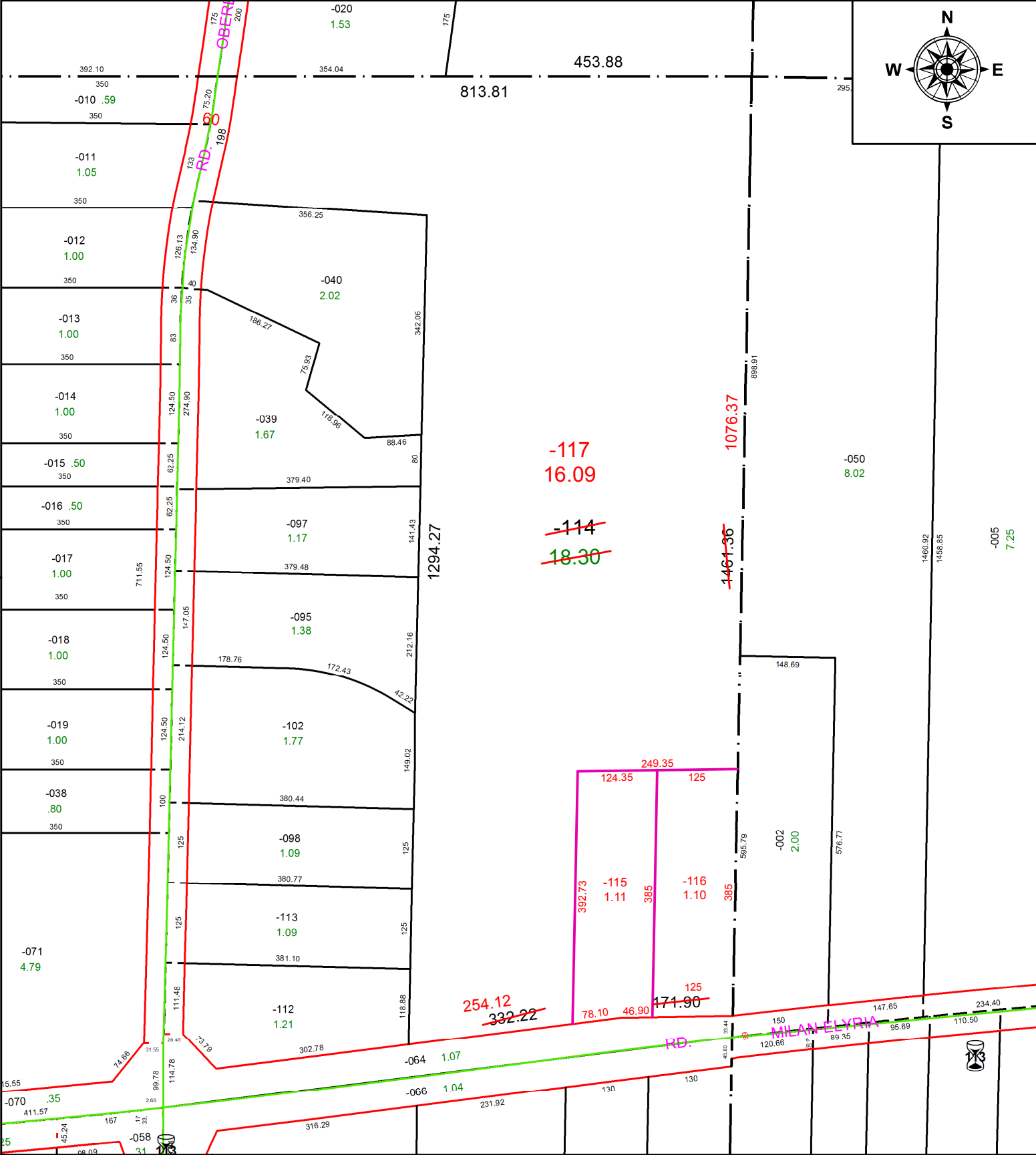


PARENT PARCEL: 05-00-053-000-114
 CHILD PARCEL: 05-00-053-000-115 THRU -117
 STARTING POINT: INTERSECTION OF C/L OF S.R.113 AND C/L OF OBERLIN RD.

20-04196



SPLITS/DEEDS PROCESSED
 LORAIN COUNTY TAX MAP DEPARTMENT
 226 MIDDLE AVE. ELYRIA, OH

SURVEYED BY: THOMAS A. SIMON
 CLOSURE: 1:450,438
 MAP PAGE(S): 5-00-053
 APPROVED BY: RRM DATE: 10-16-20
 SCALE: 1" = 200 PRIOR INSTRUMENT: 20200766375