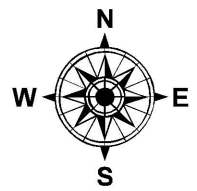
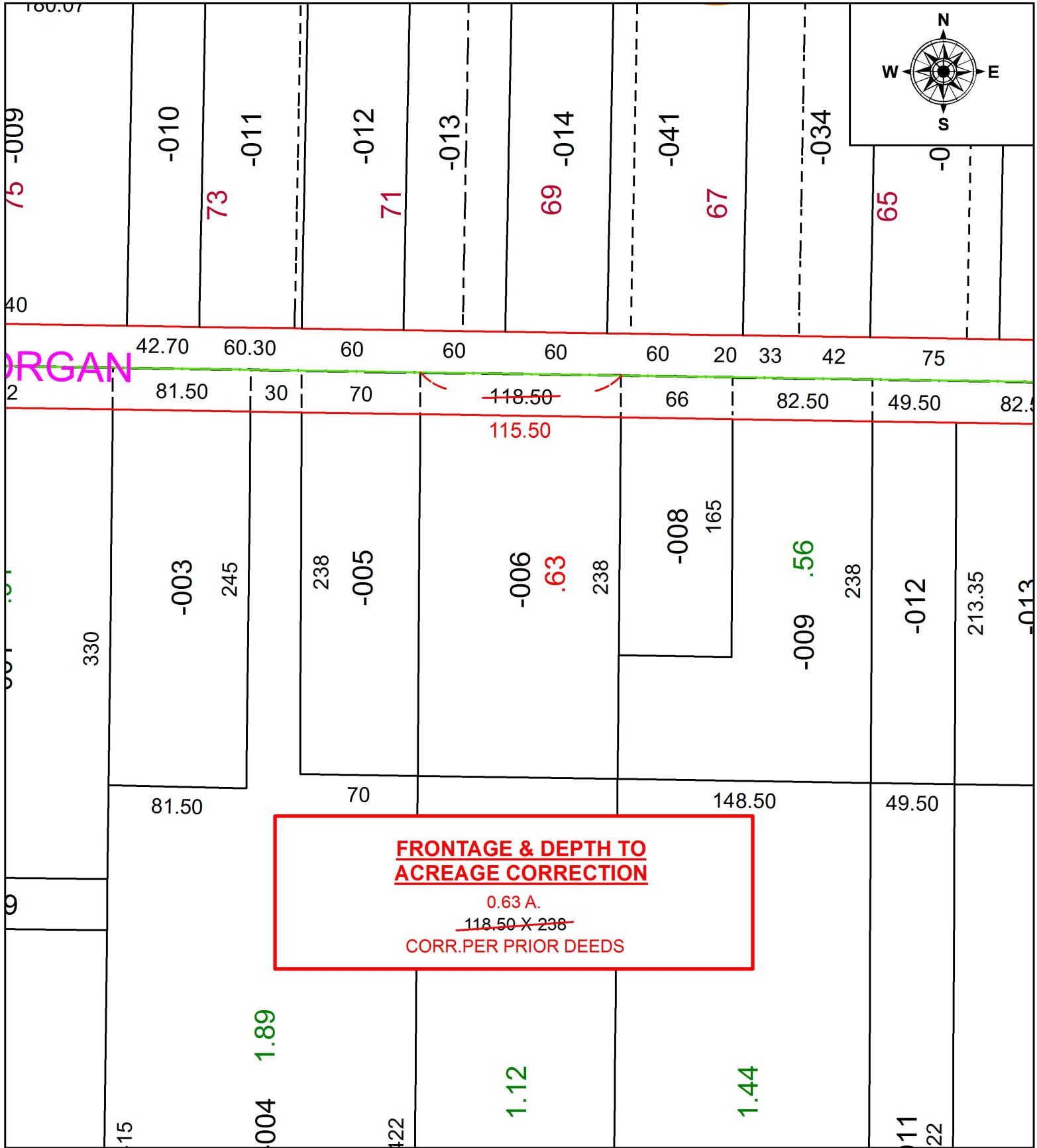


PARENT PARCEL: 09-00-095-101-006

CHILD PARCEL:

STARTING POINT: 19 RODS EAST FROM THE NORTHWEST CORNER OF O.L.95

19-04193-C



**FRONTAGE & DEPTH TO  
ACREAGE CORRECTION**

0.63 A.  
~~118.50 X 238~~  
CORR. PER PRIOR DEEDS



**SPLITS/DEEDS PROCESSED**  
LORAIN COUNTY TAX MAP DEPARTMENT  
226 MIDDLE AVE. ELYRIA, OH

SURVEYED BY: \_\_\_\_\_ N/A  
CLOSURE: \_\_\_\_\_ N/A  
MAP PAGE(S): \_\_\_\_\_ 9-00-095  
APPROVED BY: \_\_\_\_\_ RRM DATE: \_\_\_\_\_ 9-25-19  
SCALE: \_\_\_\_\_ 1" = 75' PRIOR INSTRUMENT: \_\_\_\_\_ 20180669899