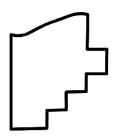
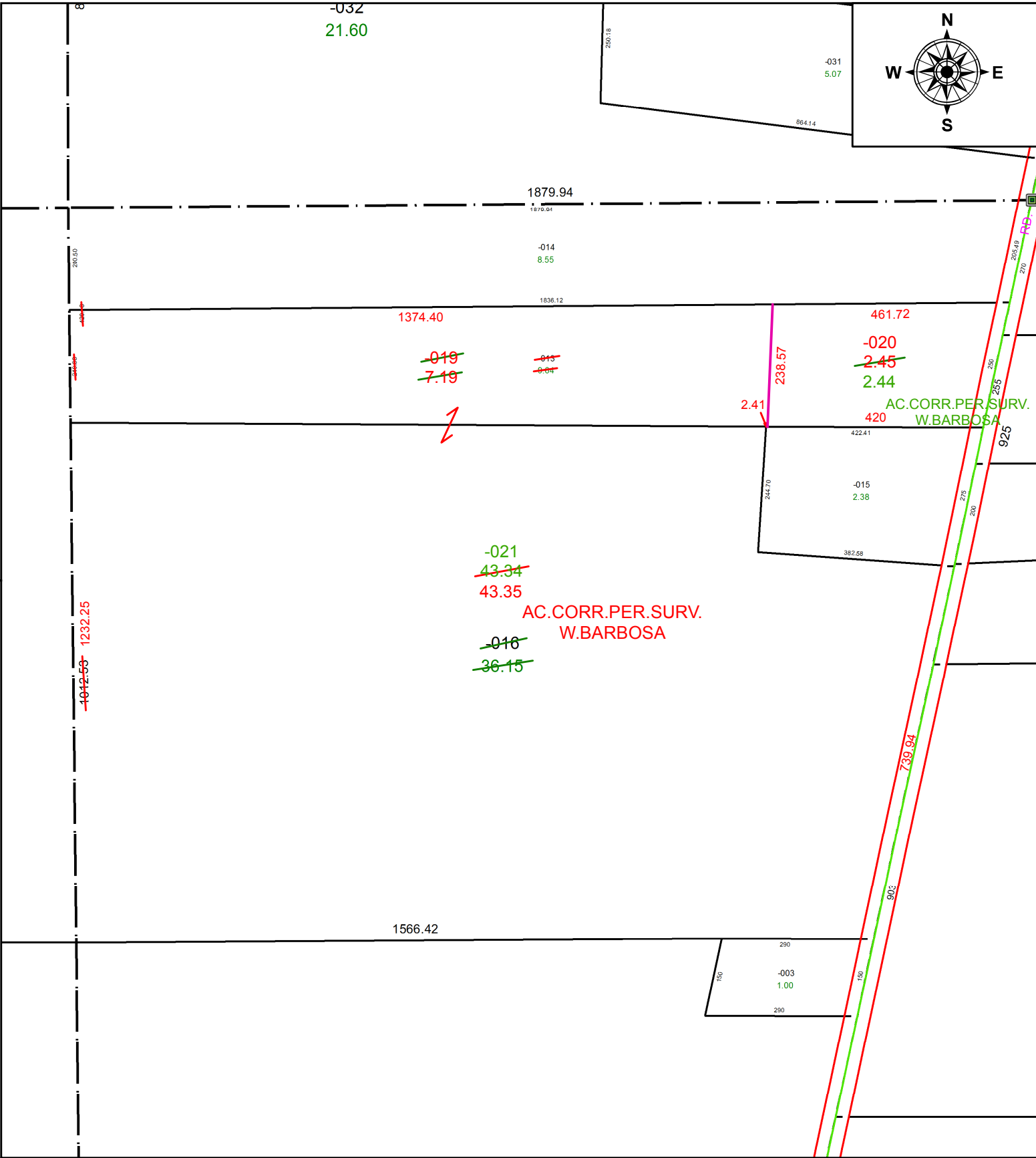


PARENT PARCEL: 15-00-088-000-013, -016
 CHILD PARCEL: 15-00-088-000-019 THRU -021
 STARTING POINT: INTERSECTION OF C/L OF INDIAN HOLLOW RD. AND NORTH LINE OF O.L. 88

20-04183



SPLITS/DEEDS PROCESSED
 LORAIN COUNTY TAX MAP DEPARTMENT
 226 MIDDLE AVE. ELYRIA, OH

SURVEYED BY: WILFREDO BARBOSA
 CLOSURE: 1:104,214
 MAP PAGE(S): 15-00-088
 APPROVED BY: RRM DATE: 10-5-20
 SCALE: 1" = 250 PRIOR INSTRUMENT: 20110381847