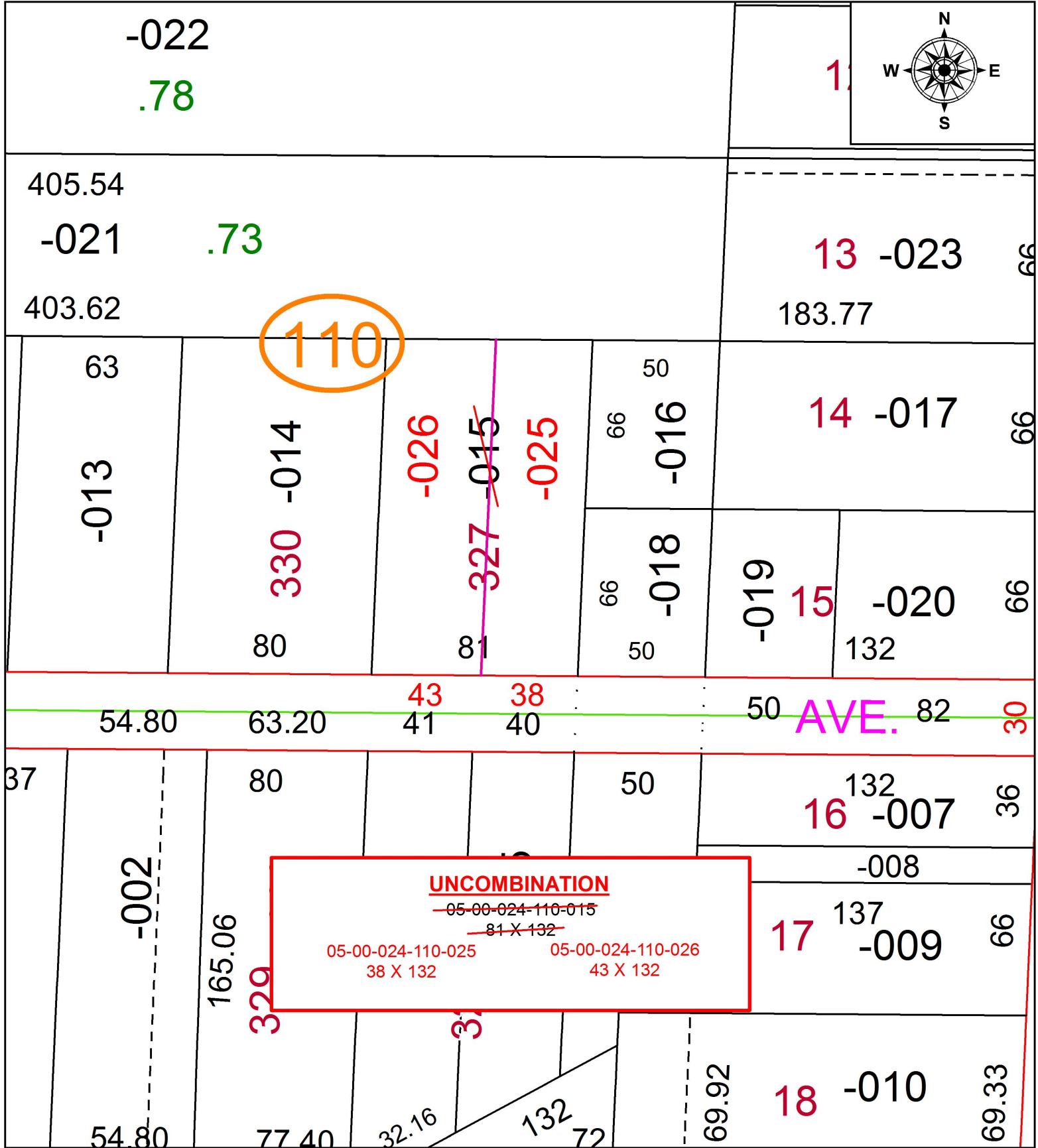


PARENT PARCEL: 05-00-024-110-015

CHILD PARCEL: 05-00-024-110-025, -026

STARTING POINT: SOUTHEAST CORNER OF S/L 327 IN J.C. BARNEY ADDITION

19-04183-U



SPLITS/DEEDS PROCESSED
 LORAIN COUNTY TAX MAP DEPARTMENT
 226 MIDDLE AVE. ELYRIA, OH

SURVEYED BY: _____ N/A
 CLOSURE: _____ N/A
 MAP PAGE(S): 5-00-024
 APPROVED BY: RRM DATE: 9-4-19
 SCALE: 1" = 50 PRIOR INSTRUMENT: 20190714864