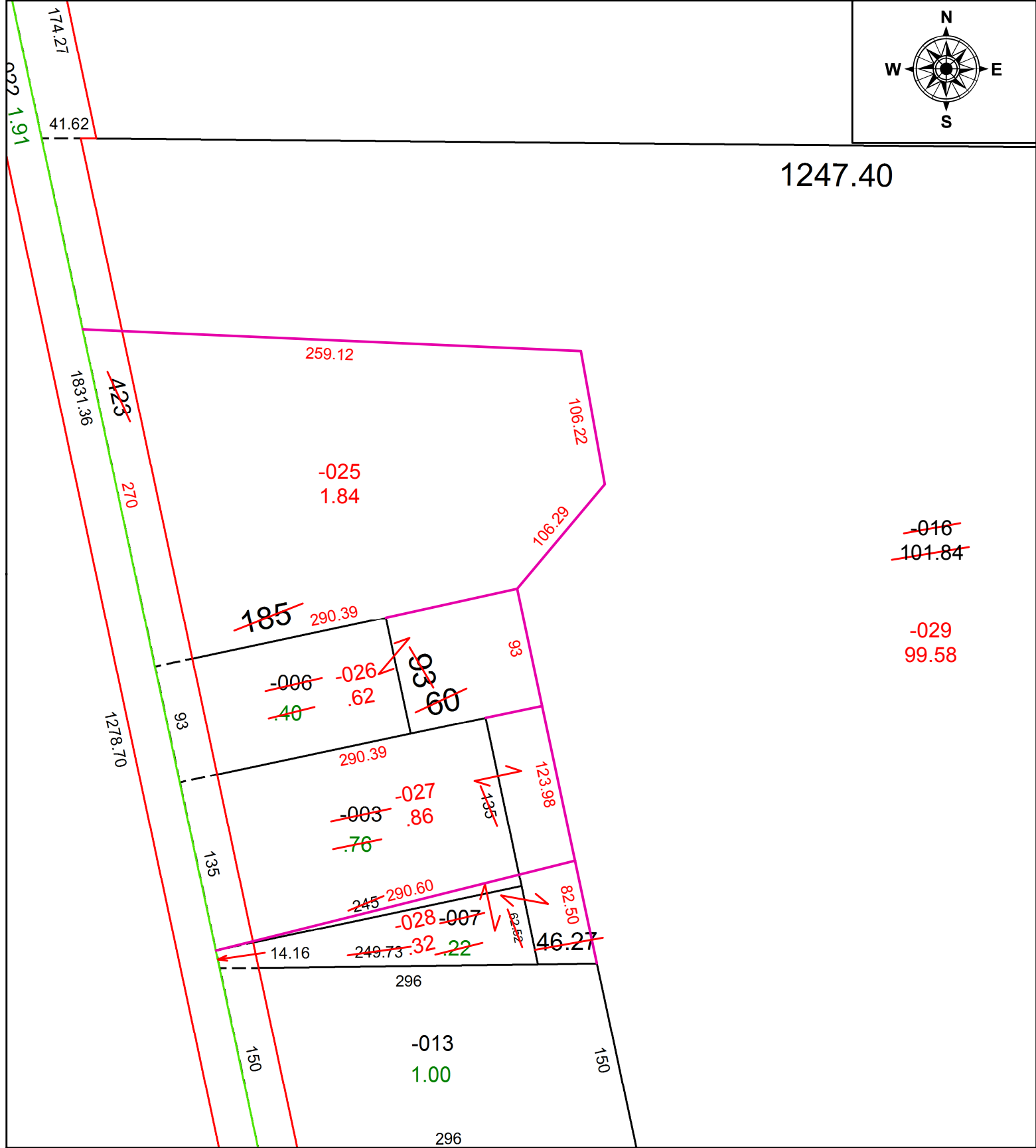
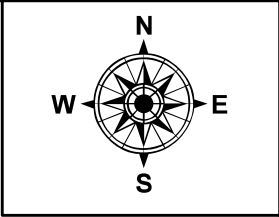


PARENT PARCEL: 01-00-058-000-003, -006, -007, -016

CHILD PARCEL: 01-00-058-000-025 THRU -029

STARTING POINT: INTERSECTION OF C/L OF BAUMHART RD, AND SOUTH LINE OF O.L.58

20-04180



**SPLITS/DEEDS PROCESSED**  
LORAIN COUNTY TAX MAP DEPARTMENT  
226 MIDDLE AVE. ELYRIA, OH

SURVEYED BY: DAVID A. WILLIAMS  
CLOSURE: 1:492,999  
MAP PAGE(S): 1-00-058  
APPROVED BY: RRM DATE: 9-15-20  
SCALE: 1" = 100 PRIOR INSTRUMENT: 20120420653