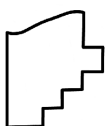
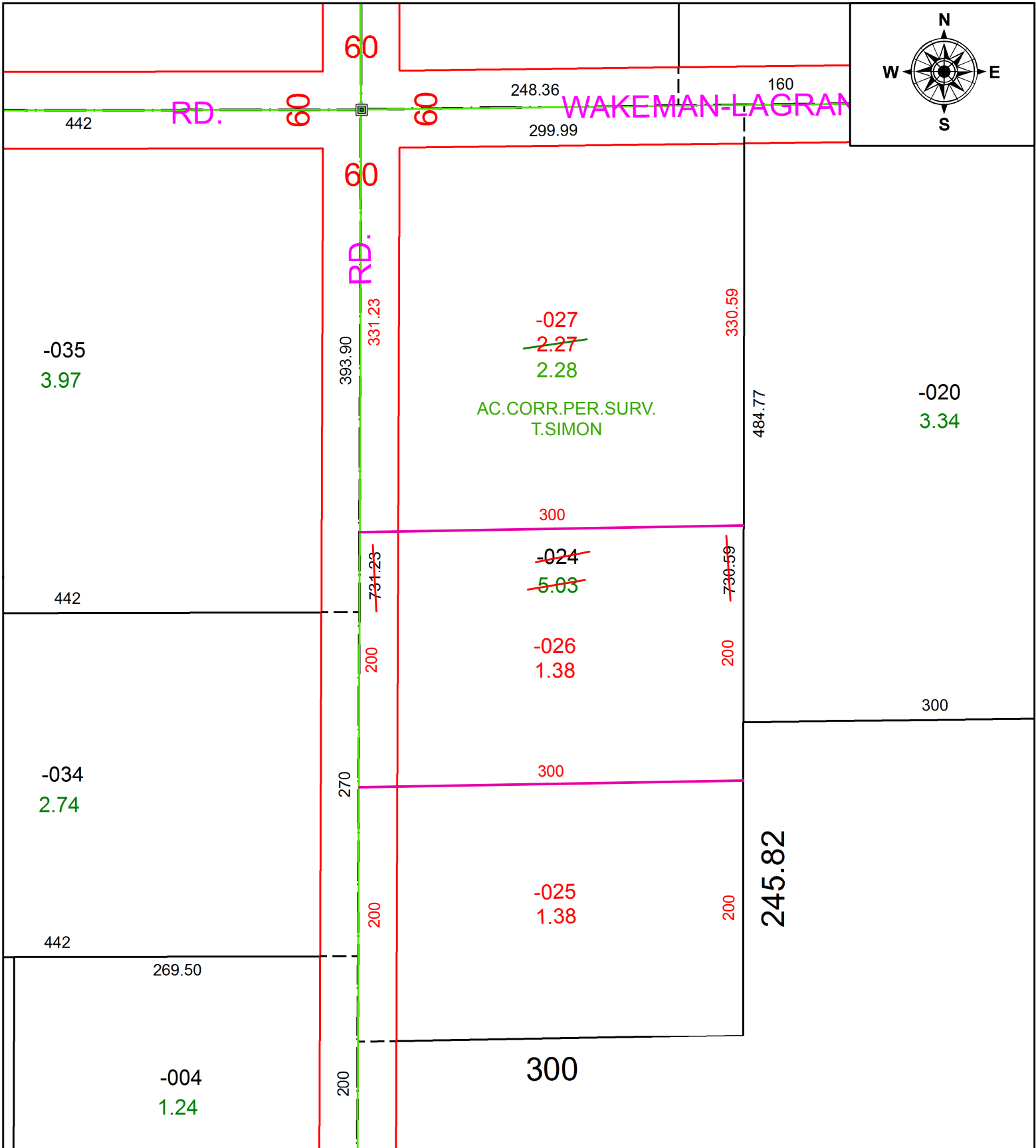


PARENT PARCEL: 15-00-057-000-024

CHILD PARCEL: 15-00-057-000-025 THRU -027

STARTING POINT: INTERSECTION OF C/L OF S.R.303 AND C/L OF WHITEHEAD RD.

20-04179



**SPLITS/DEEDS PROCESSED**  
 LORAIN COUNTY TAX MAP DEPARTMENT  
 226 MIDDLE AVE. ELYRIA, OH

SURVEYED BY: THOMAS A. SIMON

CLOSURE: 1:612,415

MAP PAGE(S): 15-00-057

APPROVED BY: RRM DATE: 9-15-20

SCALE: 1" = 100 PRIOR INSTRUMENT: 20200771900