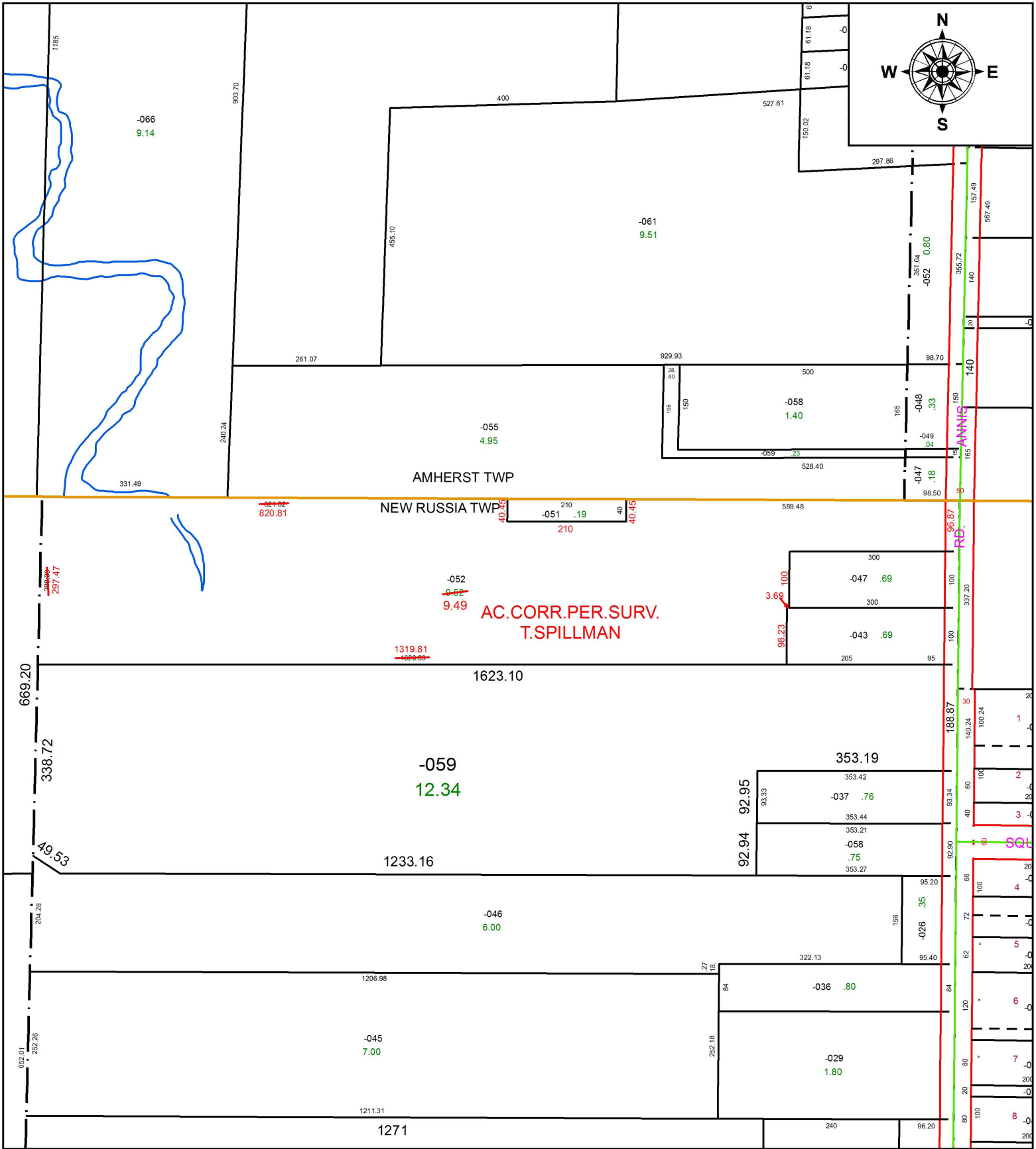


PARENT PARCEL: 09-00-004-101-052

CHILD PARCEL:

STARTING POINT: INTERSECTION OF C/L OF NICHOLSON AVE. AND C/L OF LIBERTY AVE.

19-04178-D



SPLITS/DEEDS PROCESSED
 LORAIN COUNTY TAX MAP DEPARTMENT
 226 MIDDLE AVE. ELYRIA, OH

SURVEYED BY: THEODORE J. SPILLMAN

CLOSURE: 1:813,336

MAP PAGE(S): 9-00-004

APPROVED BY: RRM **DATE:** 8-27-19

SCALE: 1" = 225 **PRIOR INSTRUMENT:** 20140511034