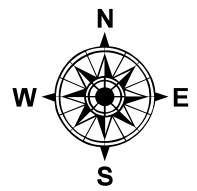
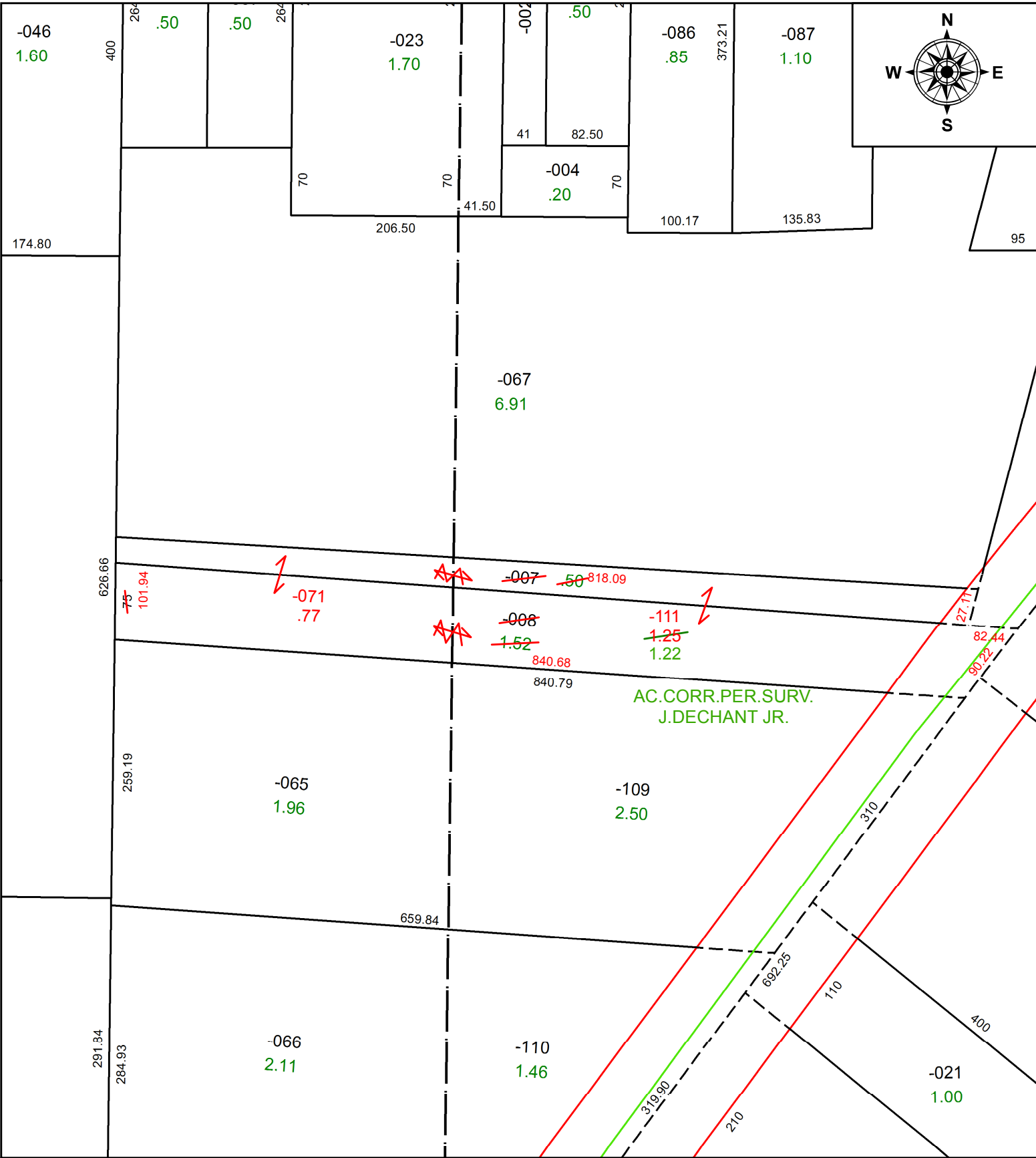


PARENT PARCEL: 09-00-090-000-007, -008

CHILD PARCEL: 09-00-089-000-071, 09-00-090-000-111

STARTING POINT: INTERSECTION OF NORTH LINE OF O.L.90 AND C/L OF S.R. 511

20-04176



SPLITS/DEEDS PROCESSED
 LORAIN COUNTY TAX MAP DEPARTMENT
 226 MIDDLE AVE. ELYRIA, OH

SURVEYED BY: JOHN A. DECHANT JR.
 CLOSURE: 1:285,946
 MAP PAGE(S): 9-00-090
 APPROVED BY: RRM DATE: 9-9-20
 SCALE: 1" = 125 PRIOR INSTRUMENT: 20060121530