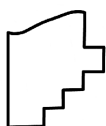
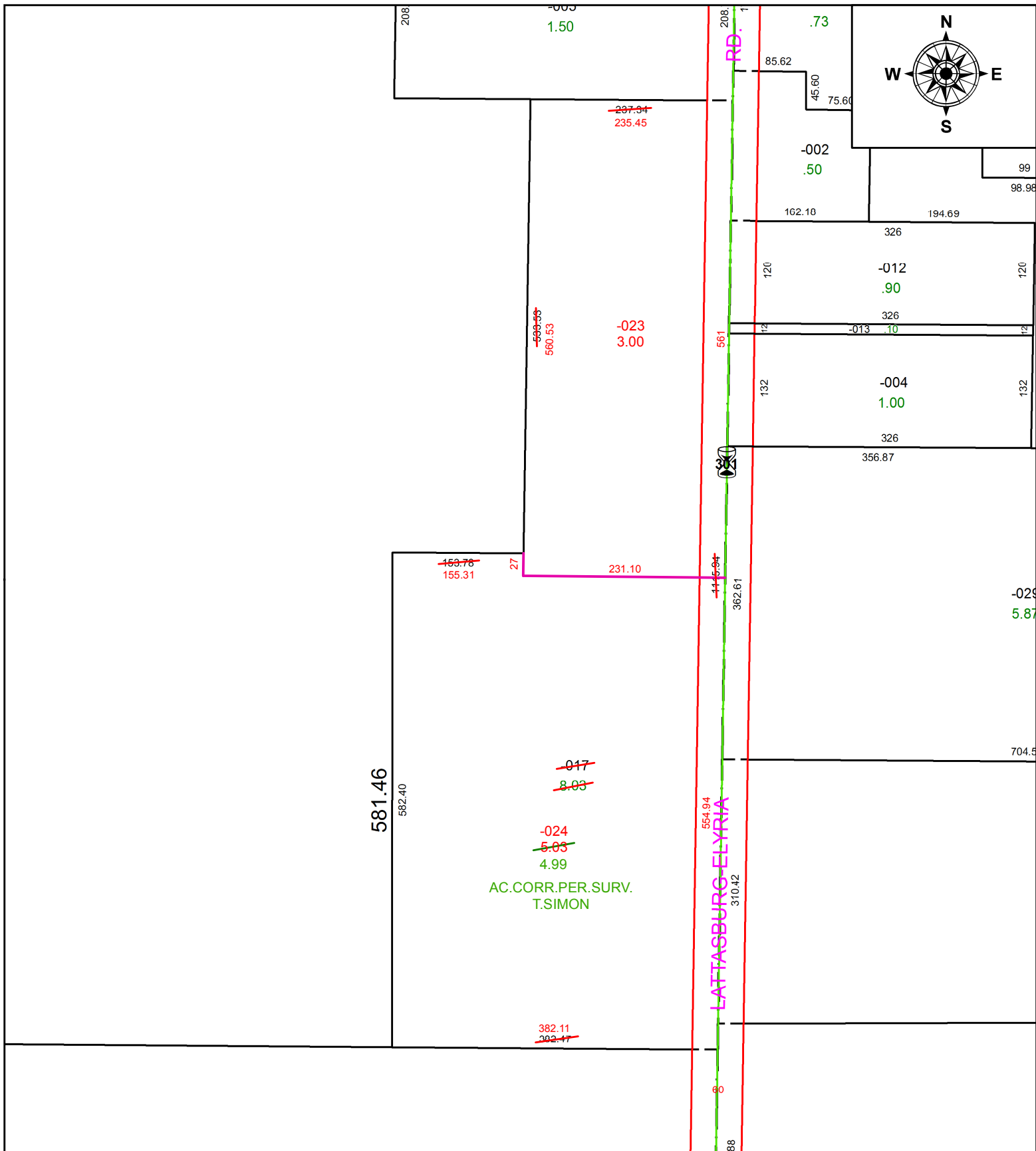


PARENT PARCEL: 19-03-009-000-017

CHILD PARCEL: 19-03-009-000-023, -024

STARTING POINT: INTERSECTION OF C/L OF S.R. 18 AND C/L OF S.R. 301

20-04175



**SPLITS/DEEDS PROCESSED**  
 LORAIN COUNTY TAX MAP DEPARTMENT  
 226 MIDDLE AVE. ELYRIA, OH

SURVEYED BY: THOMAS A. SIMON  
 CLOSURE: 1:393,760  
 MAP PAGE(S): 19-03-009  
 APPROVED BY: RRM DATE: 9-9-20  
 SCALE: 1" = 150 PRIOR INSTRUMENT: 20190704822