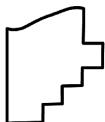
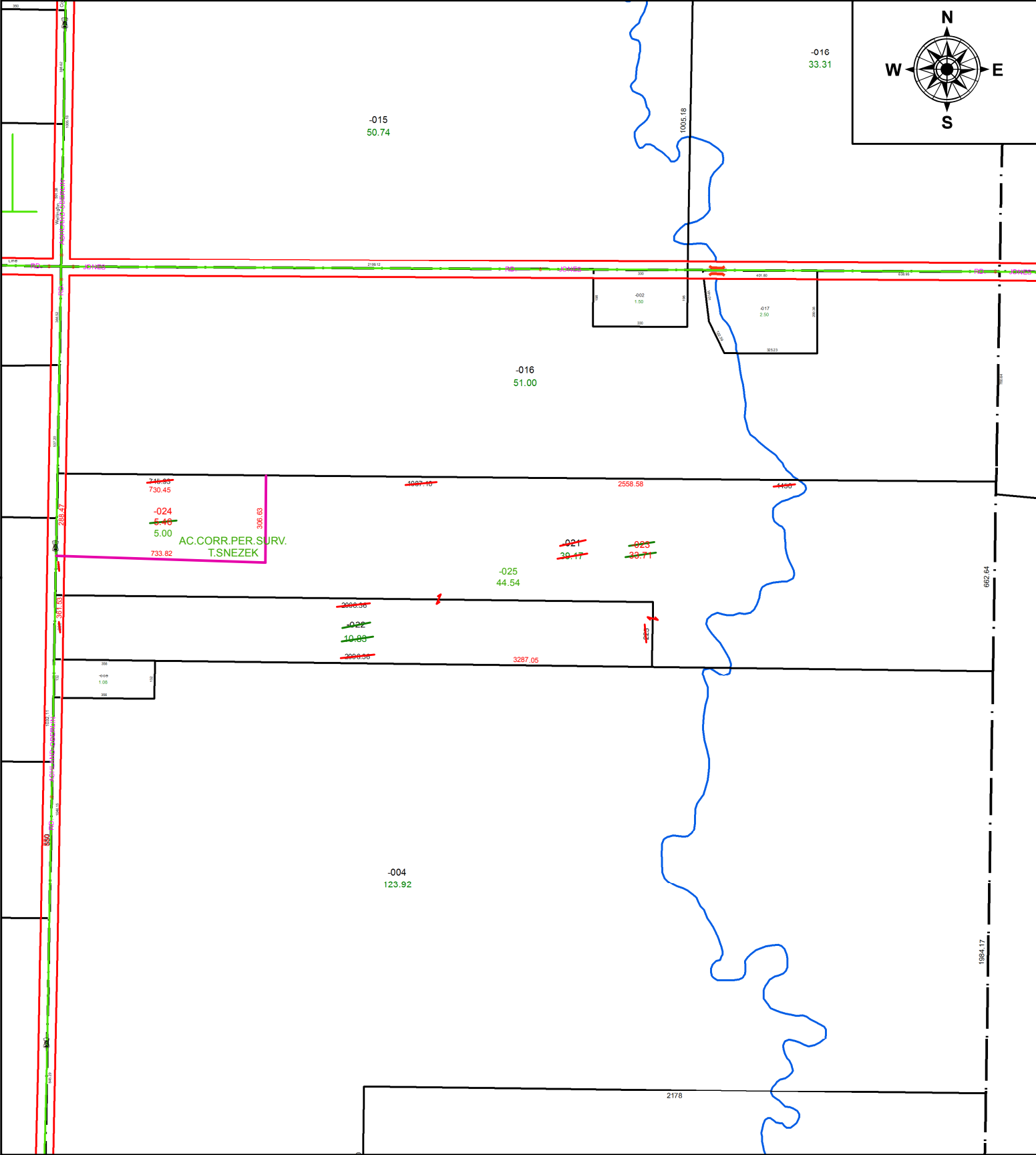
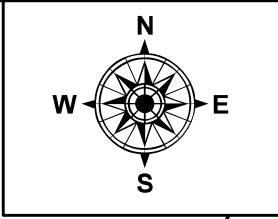


PARENT PARCEL: 18-00-024-000-021, -022

CHILD PARCEL: 18-00-024-000-023 THRU -025

STARTING POINT: INTERSECTION OF C/L OF NICHOLSON AVE. AND C/L OF LIBERTY AVE.

20-04174



**SPLITS/DEEDS PROCESSED**  
LORAIN COUNTY TAX MAP DEPARTMENT  
226 MIDDLE AVE. ELYRIA, OH

SURVEYED BY: THOMAS M. SNEZEK  
CLOSURE: 1:539,348  
MAP PAGE(S): 18-00-024  
APPROVED BY: RRM DATE: 9-2-20  
SCALE: 1" = 450 PRIOR INSTRUMENT: 20130471939