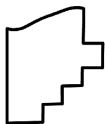
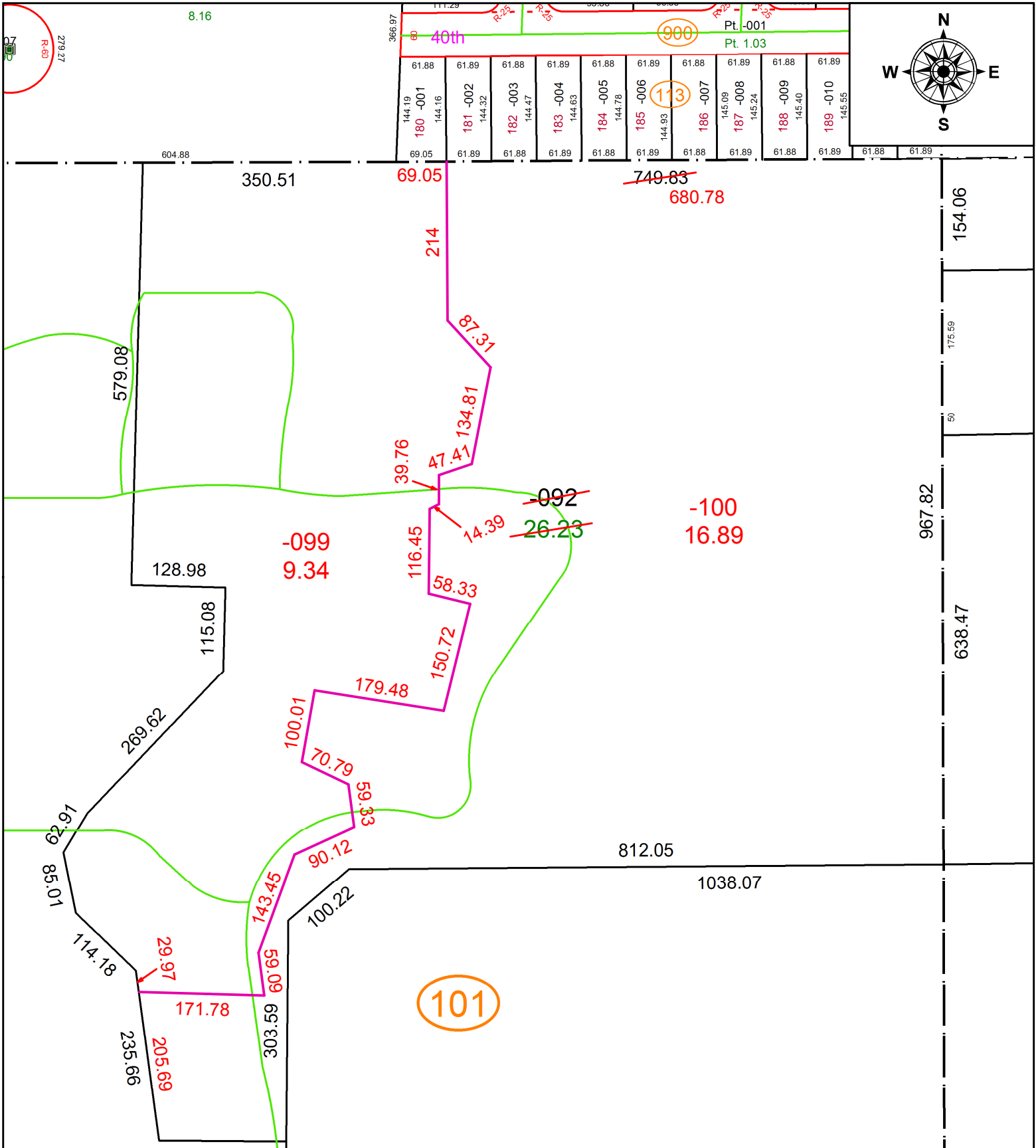


PARENT PARCEL: 02-02-009-101-092

CHILD PARCEL: 02-02-009-101-099, -100

STARTING POINT: INTERSECTION OF EAST LINE OF O.L.9 AND C/L OF JAEGER RD.

20-04173



SPLITS/DEEDS PROCESSED
 LORAIN COUNTY TAX MAP DEPARTMENT
 226 MIDDLE AVE. ELYRIA, OH

SURVEYED BY: JOHN HANCOCK
 CLOSURE: 1:149,220
 MAP PAGE(S): 2-02-009
 APPROVED BY: RRM DATE: 8-27-20
 SCALE: 1" = 175 PRIOR INSTRUMENT: 20180670546