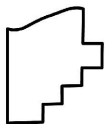
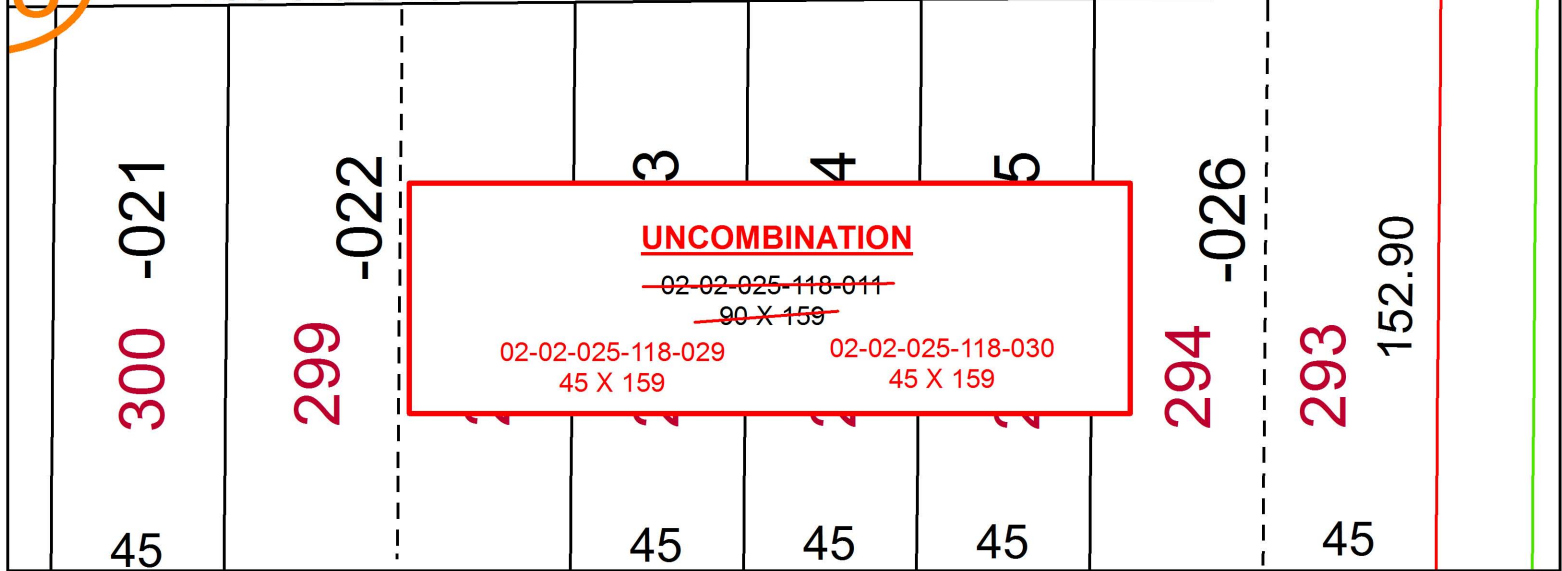
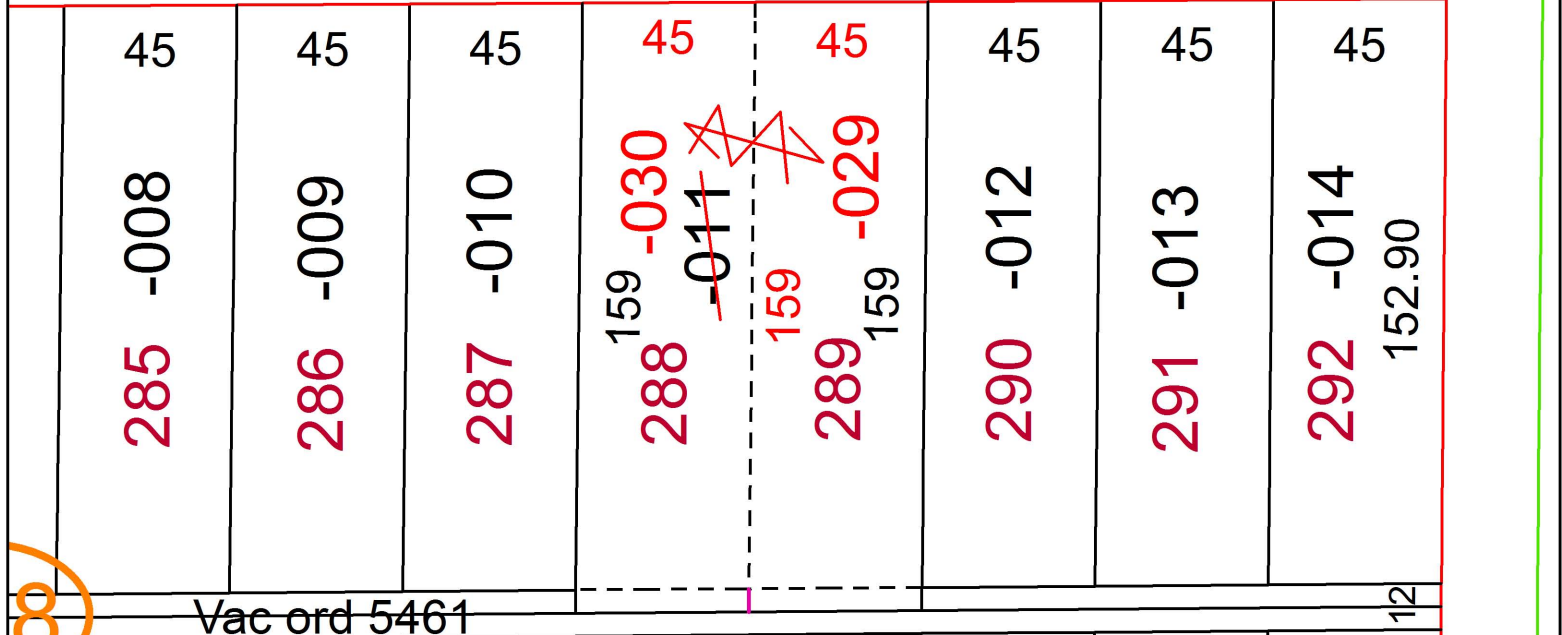
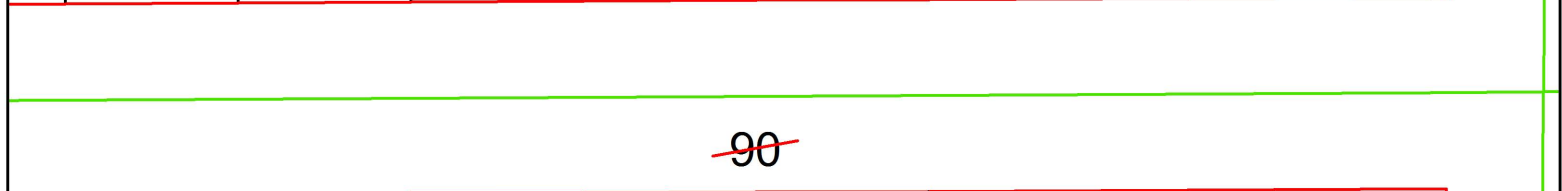
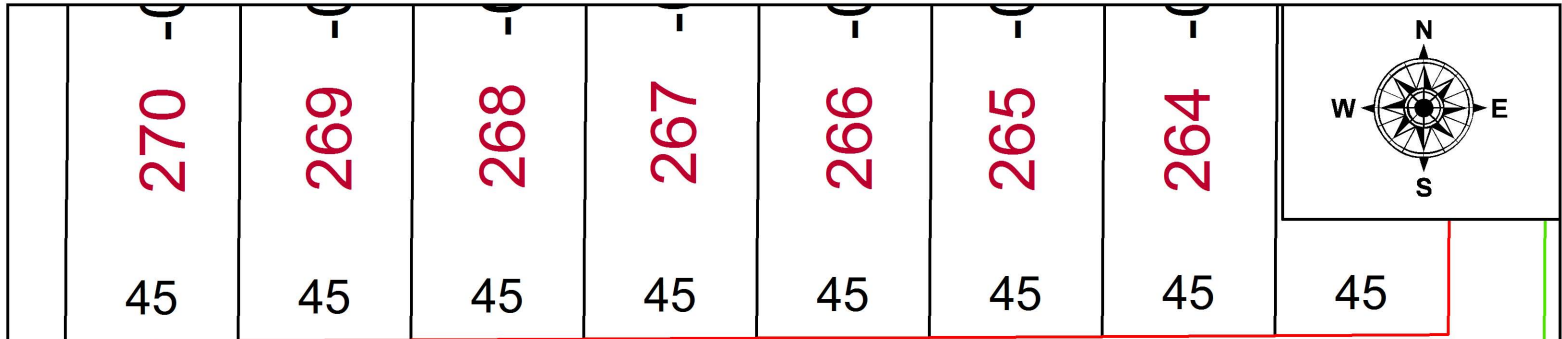


PARENT PARCEL: 02-02-025-118-011

CHILD PARCEL: 02-02-025-118-029, -030

STARTING POINT: S/Ls 288 & 289 IN OAKLAND ADDITION

19-04171-U



SPLITS/DEEDS PROCESSED
 LORAIN COUNTY TAX MAP DEPARTMENT
 226 MIDDLE AVE. ELYRIA, OH

SURVEYED BY: N/A
 CLOSURE: N/A
 MAP PAGE(S): 2-02-025
 APPROVED BY: RRM DATE: 8-13-19
 SCALE: 1" = 50 PRIOR INSTRUMENT: 20110386863