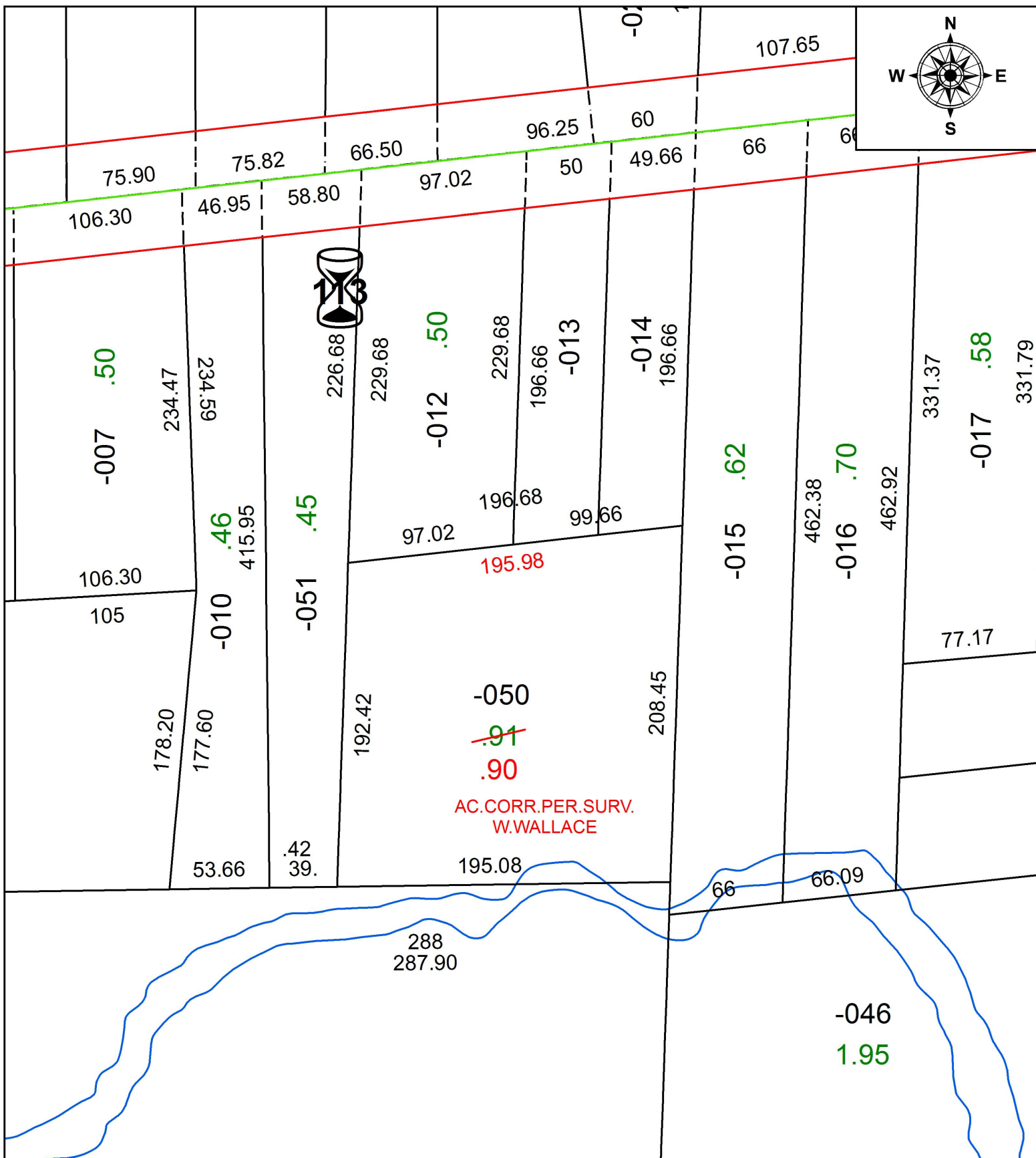


PARENT PARCEL: 05-00-011-103-050

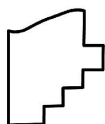
CHILD PARCEL:

STARTING POINT: INTERSECTION OF C/L OF E. MAIN ST. AND C/L OF VIVIAN ST.

19-04170-A



AC.CORR.PER.SURV.
W.WALLACE



SPLITS/DEEDS PROCESSED
LORAIN COUNTY TAX MAP DEPARTMENT
226 MIDDLE AVE. ELYRIA, OH

SURVEYED BY: WILLIAM R. WALLACE

CLOSURE: 1: 2,023,689

MAP PAGE(S): 5-00-011

APPROVED BY: RRM DATE: 8-13-19

SCALE: 1" = 75' PRIOR INSTRUMENT: 20160602266