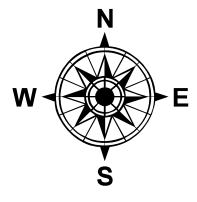
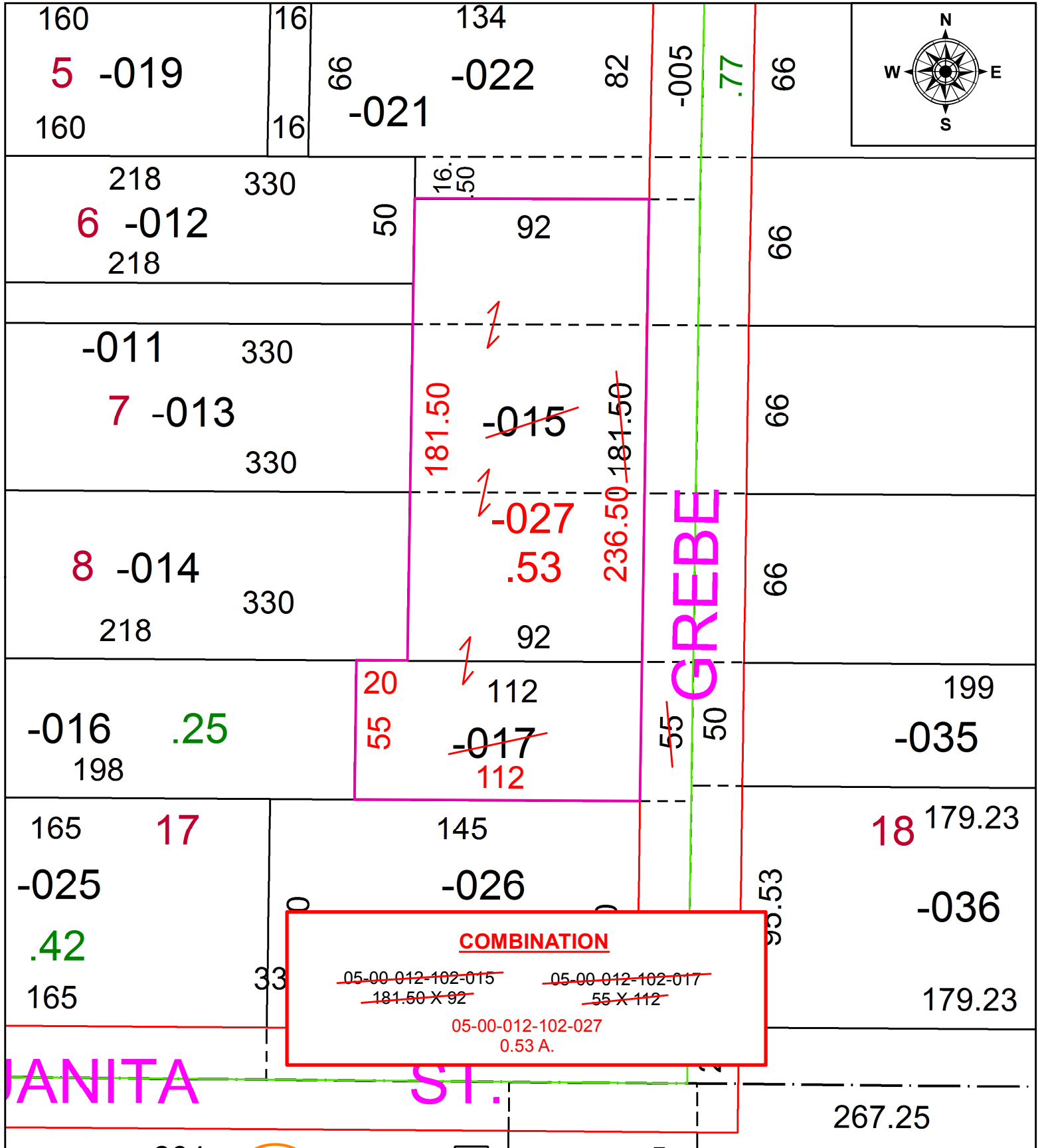


PARENT PARCEL: 05-00-012-102-015, -017

CHILD PARCEL: 05-00-012-102-027

STARTING POINT: INTERSECTION OF C/L OF JUANITA ST. AND C/L OF ERIE ST.

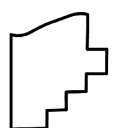
20-04169



COMBINATION

~~05-00-012-102-015~~ ~~05-00-012-102-017~~
~~181.50 X 92~~ ~~55 X 112~~

05-00-012-102-027
0.53 A.



SPLITS/DEEDS PROCESSED
 LORAIN COUNTY TAX MAP DEPARTMENT
 226 MIDDLE AVE. ELYRIA, OH

SURVEYED BY: PATRICK A. MCGANNON
 CLOSURE: 1: 2147483648
 MAP PAGE(S): 5-00-012
 APPROVED BY: RRM DATE: 8-21-20
 SCALE: 1" = 50 PRIOR INSTRUMENT: 20140506588