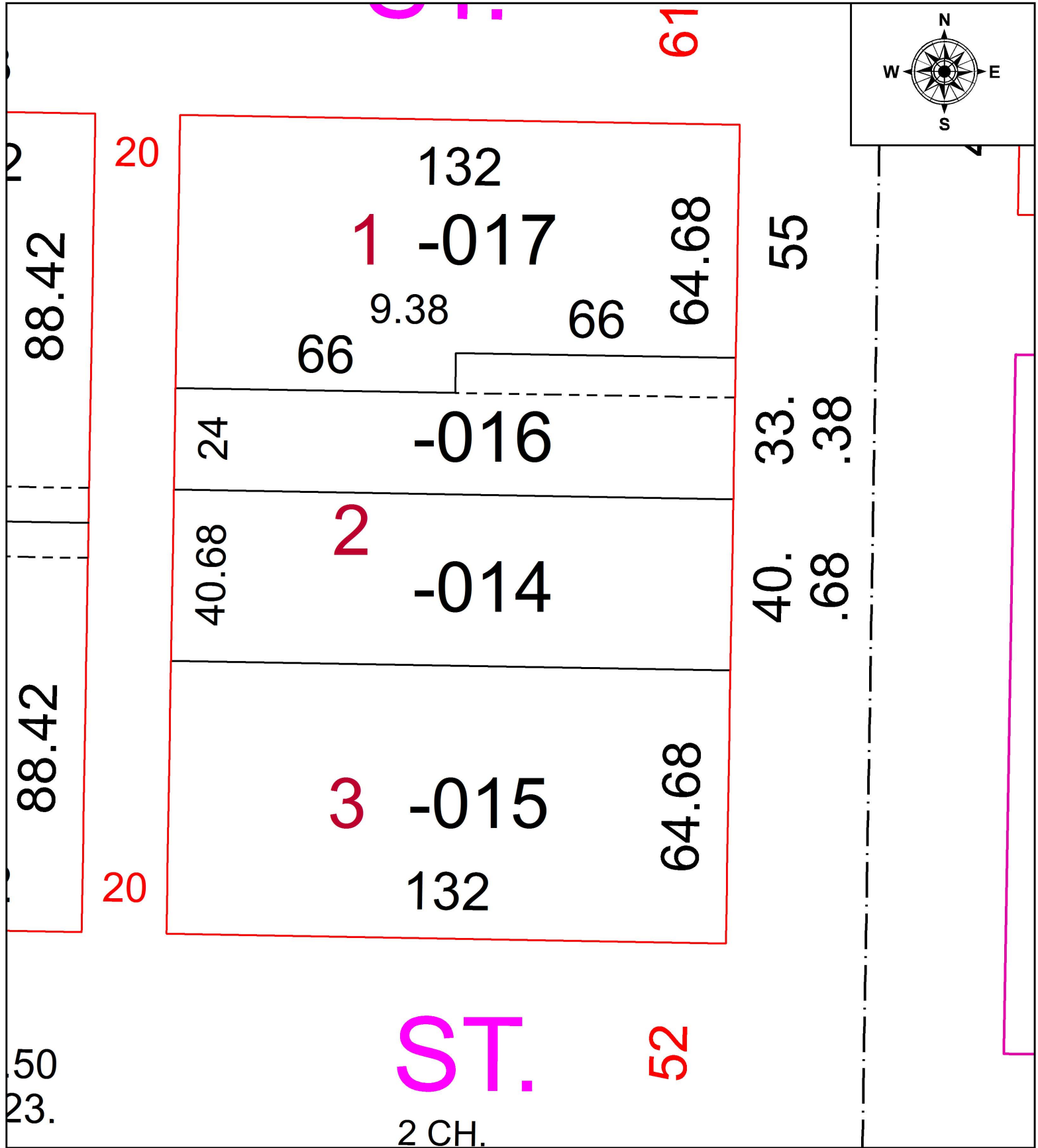
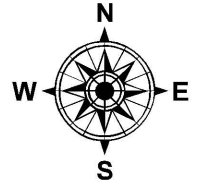


PARENT PARCEL: 06-26-008-102-014

CHILD PARCEL: FROM 40.38 X 132 TO 40.68 X 132.00

STARTING POINT: SOUTHERLY 40.68 FEET OF SUBLOT 2

19-04169-C



**SPLITS/DEEDS PROCESSED**  
 LORAIN COUNTY TAX MAP DEPARTMENT  
 226 MIDDLE AVE. ELYRIA, OH

SURVEYED BY: NA  
 CLOSURE: NA  
 MAP PAGE(S): 12-00-033  
 APPROVED BY: TJS DATE: 3/25/2020  
 SCALE: 1" = 30' PRIOR INSTRUMENT: DV 1301/312