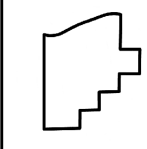
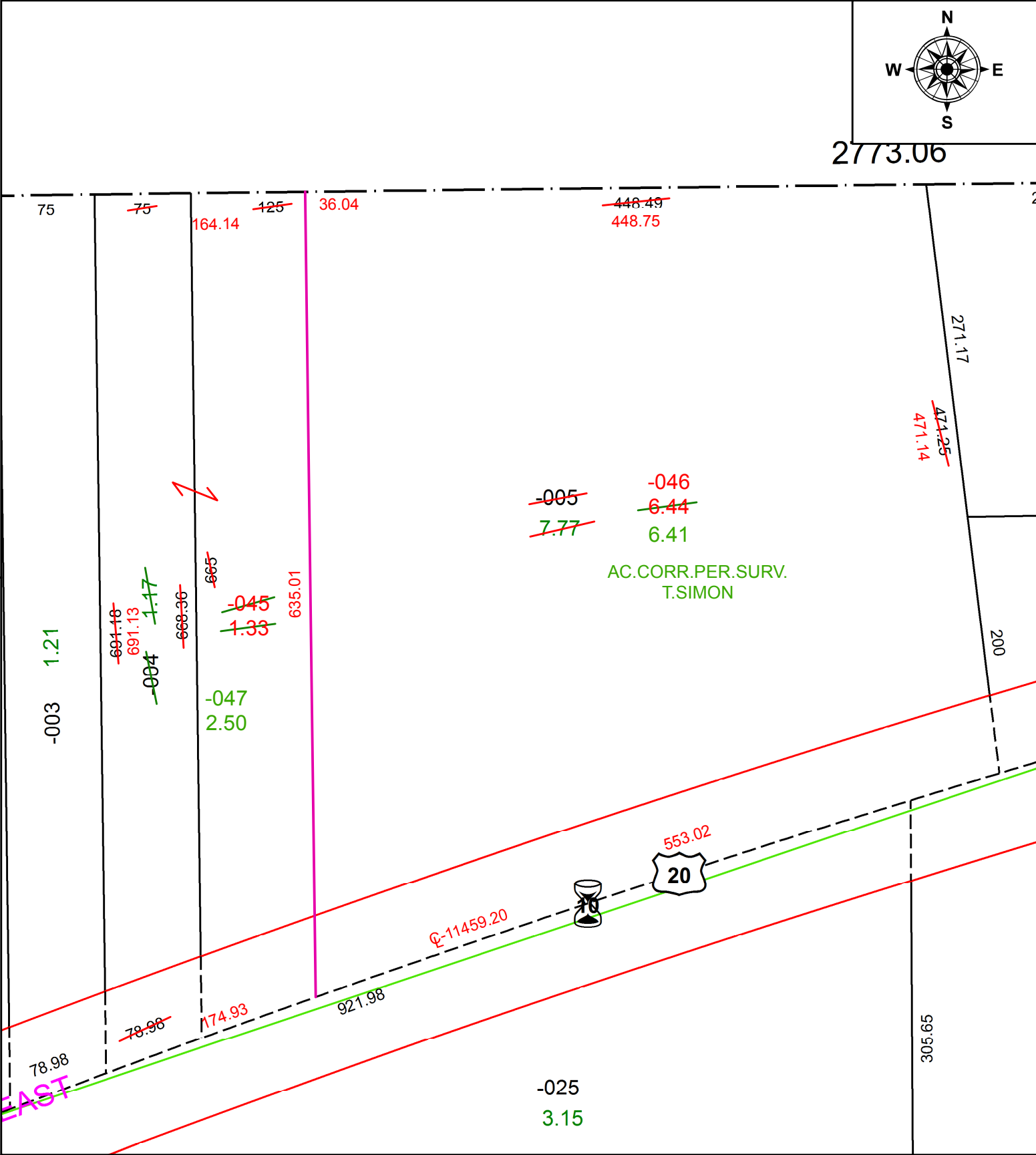
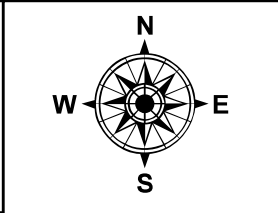


PARENT PARCEL: 14-00-030-000-004, -005

CHILD PARCEL: 14-00-030-000-045 THRU -047

STARTING POINT: NORTHEAST CORNER OF O.L.30

20-04168



SPLITS/DEEDS PROCESSED
LORAIN COUNTY TAX MAP DEPARTMENT
226 MIDDLE AVE. ELYRIA, OH

SURVEYED BY: THOMAS A. SIMON
CLOSURE: 1:203,811
MAP PAGE(S): 14-00-030
APPROVED BY: RRM DATE: 8-21-20
SCALE: 1" = 100 PRIOR INSTRUMENT: 19990625972