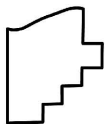
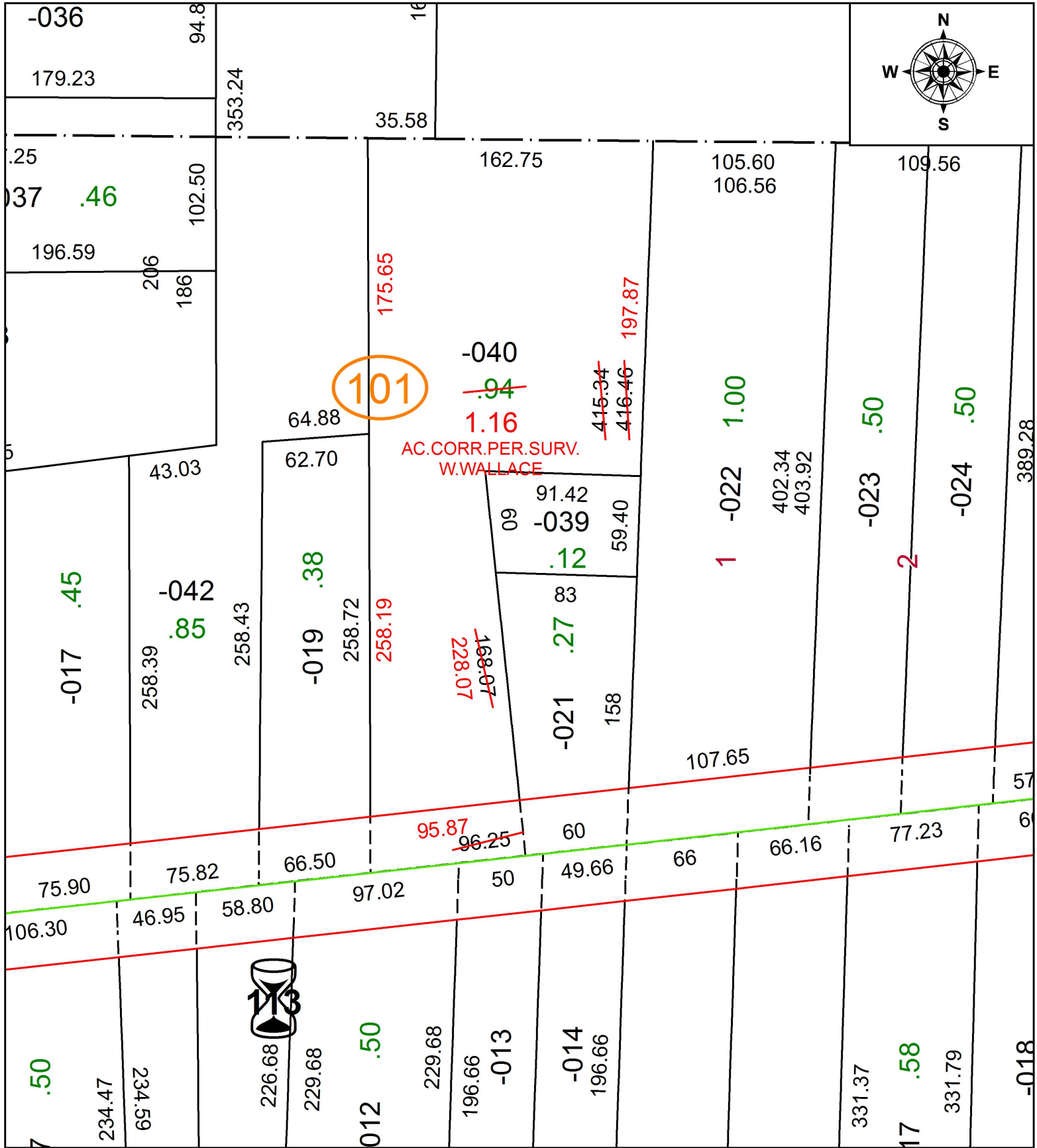


PARENT PARCEL: 05-00-011-101-040

CHILD PARCEL:

STARTING POINT: INTERSECTION OF C/L OF E. MAIN ST. AND C/L OF VIVIAN ST.

19-04168-A



**SPLITS/DEEDS PROCESSED**  
 LORAIN COUNTY TAX MAP DEPARTMENT  
 226 MIDDLE AVE. ELYRIA, OH

SURVEYED BY: WILLIAM R. WALLACE

CLOSURE: 1:183,339

MAP PAGE(S): 5-00-011

APPROVED BY: RRM DATE: 8-8-19

SCALE: 1" = 75 PRIOR INSTRUMENT: 20190717833