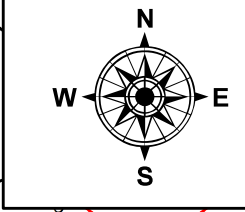
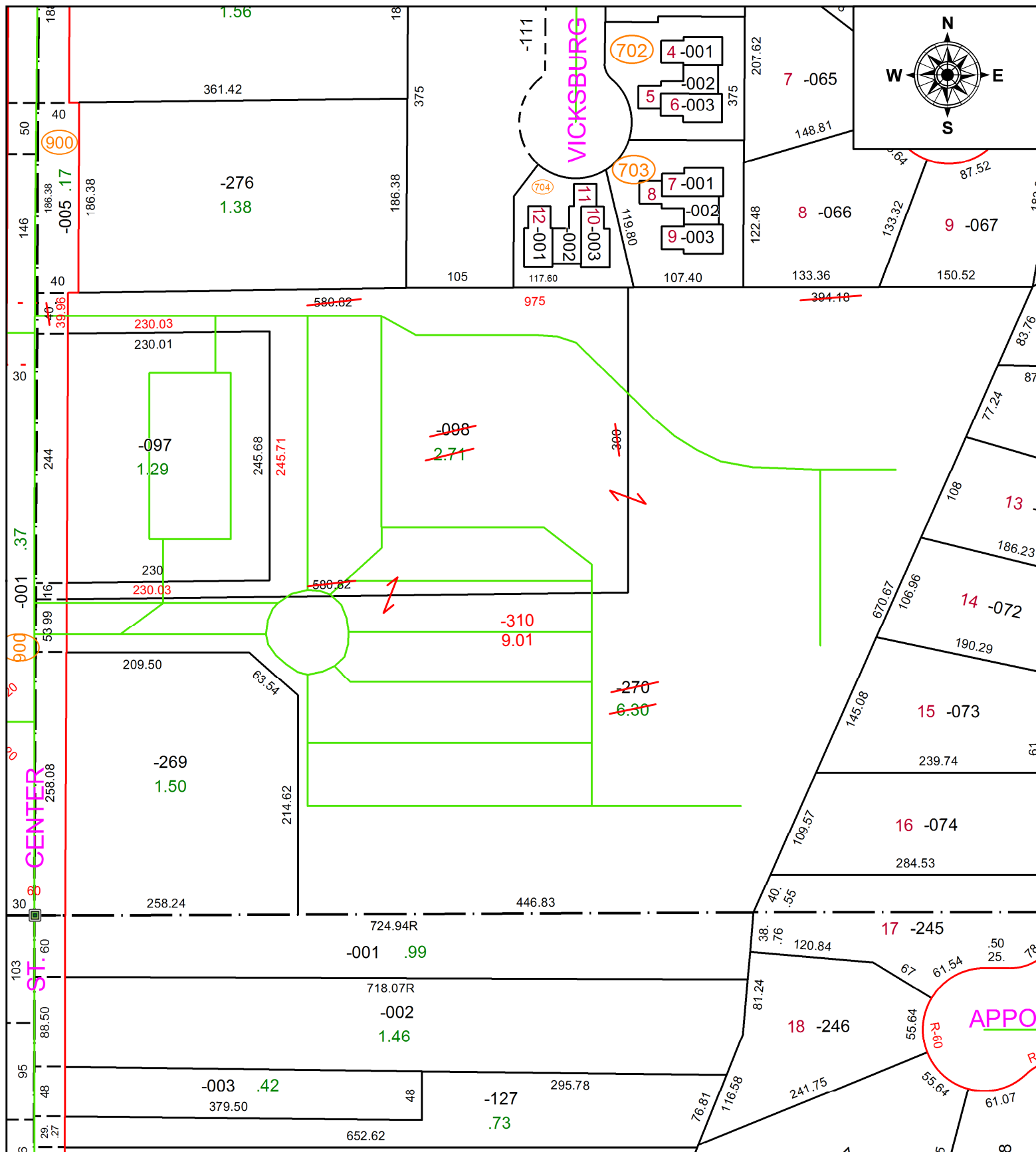


PARENT PARCEL: 15-00-035-000-098, -270

CHILD PARCEL: 15-00-035-000-310

STARTING POINT: SOUTHWEST CORNER OF O.L.35

20-04167



SPLITS/DEEDS PROCESSED
 LORAIN COUNTY TAX MAP DEPARTMENT
 226 MIDDLE AVE. ELYRIA, OH

SURVEYED BY: PHILA. ROSEBECK
CLOSURE: 1:563,480
MAP PAGE(S): 15-00-035
APPROVED BY: RRM **DATE:** 8-21-20
SCALE: 1" = 125 **PRIOR INSTRUMENT:** 20180692313