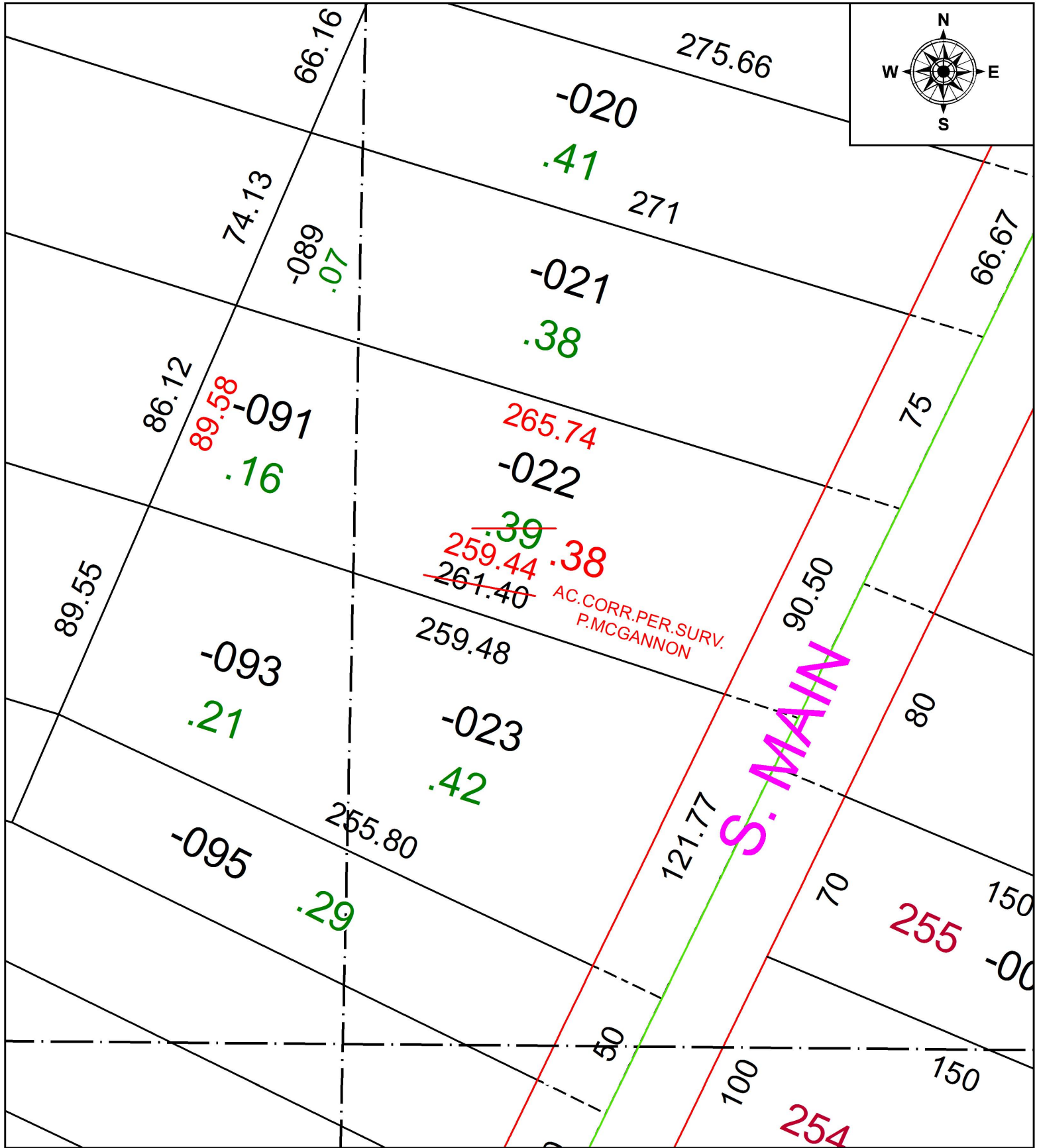


PARENT PARCEL: 05-00-017-000-091, 05-00-024-116-022

CHILD PARCEL:

STARTING POINT: INTERSECTION OF C/L OF SOUTH MAIN ST. AND SOUTH LINE OF O.L.24

19-04167-C



SPLITS/DEEDS PROCESSED
 LORAIN COUNTY TAX MAP DEPARTMENT
 226 MIDDLE AVE. ELYRIA, OH

SURVEYED BY: PATRICK A. MCGANNON
 CLOSURE: 1:172,782
 MAP PAGE(S): 5-00-024
 APPROVED BY: RRM DATE: 8-8-19
 SCALE: 1" = 50 PRIOR INSTRUMENT: 20190702611