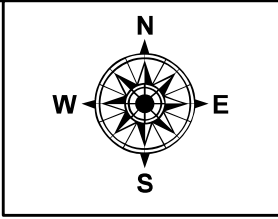


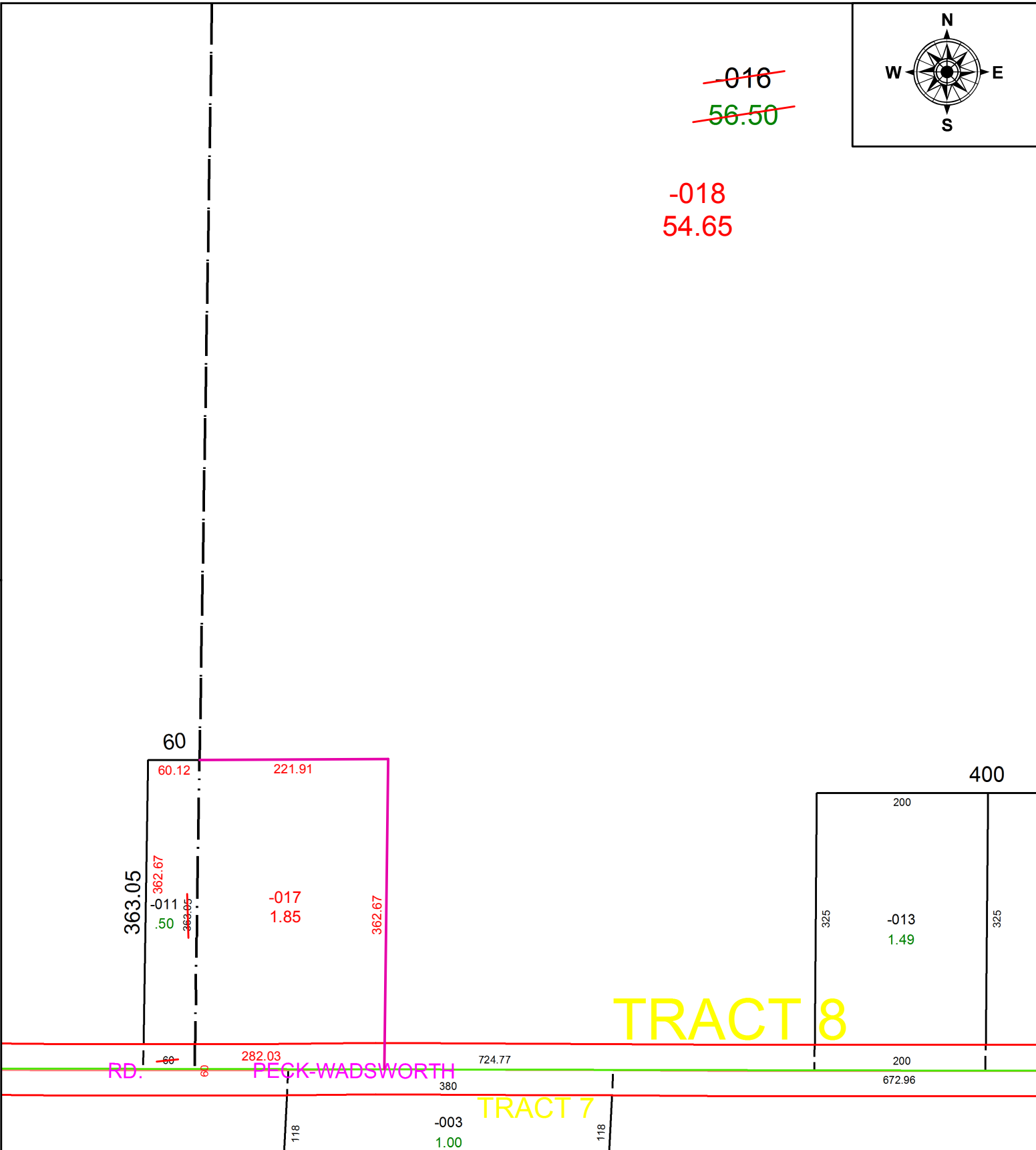
PARENT PARCEL: 17-08-031-000-016, 17-08-032-000-011
CHILD PARCEL: 17-08-031-000-017, -018, 17-08-032-000-011
STARTING POINT: INTERSECTION OF C/L OF S.R. 511 AND C/L OF PECK WADSWORTH RD.

20-04166



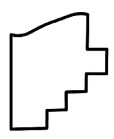
~~016~~
~~56.50~~

-018
54.65



TRACT 8

TRACT 7



SPLITS/DEEDS PROCESSED
LORAIN COUNTY TAX MAP DEPARTMENT
226 MIDDLE AVE. ELYRIA, OH

SURVEYED BY: TIMOTHY D. HOZALSKI
CLOSURE: 1: 2147483648
MAP PAGE(S): 17-08-031
APPROVED BY: RRM DATE: 8-14-20
SCALE: 1" = 150 PRIOR INSTRUMENT: 20150533451