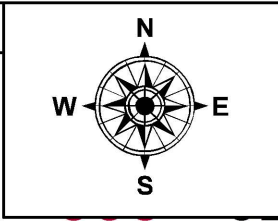
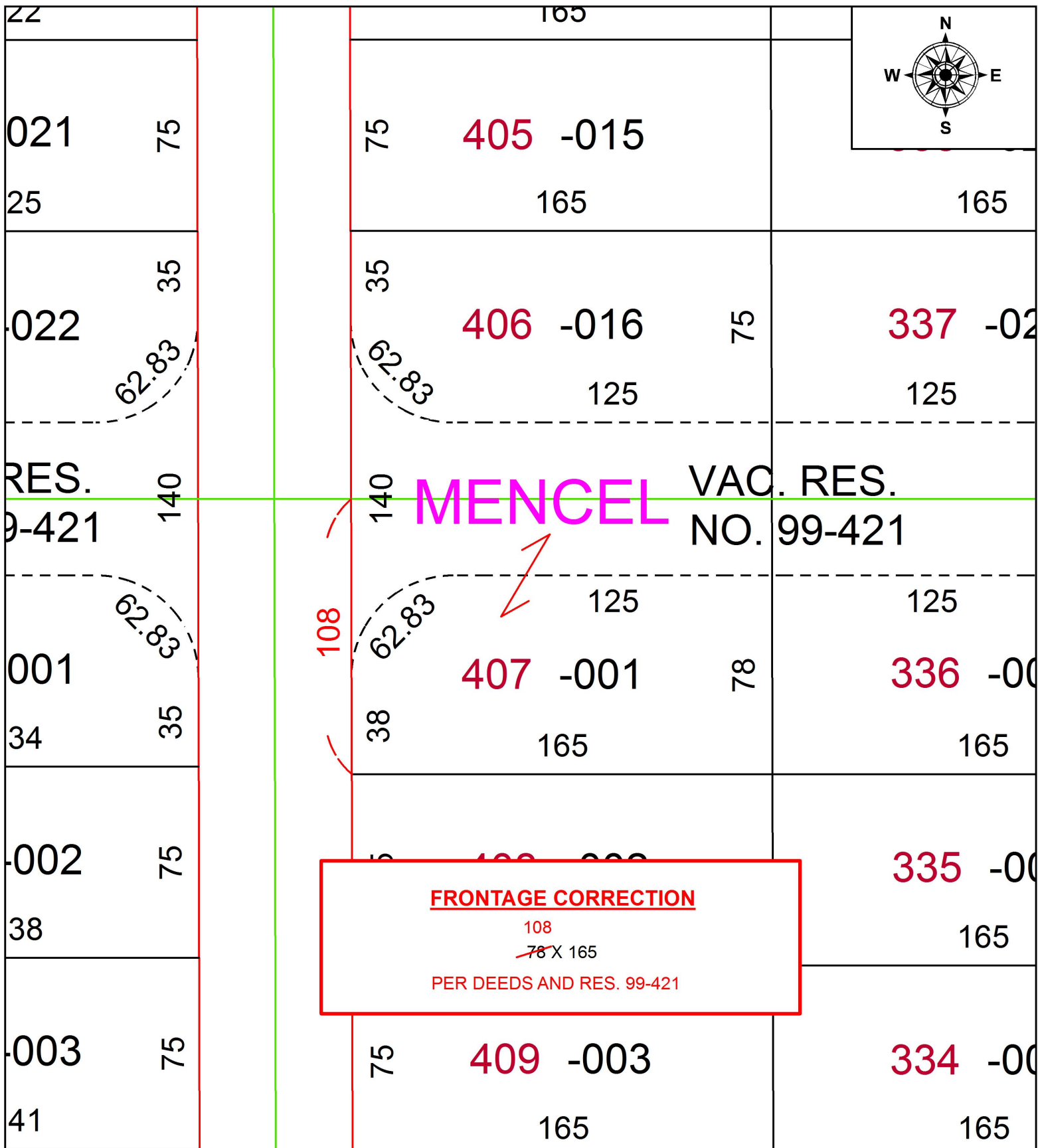


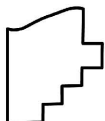
PARENT PARCEL: 11-00-036-108-001

CHILD PARCEL:

STARTING POINT:

19-04165-C



 **SPLITS/DEEDS PROCESSED**  
LORAIN COUNTY TAX MAP DEPARTMENT  
226 MIDDLE AVE. ELYRIA, OH

SURVEYED BY: N/A  
 CLOSURE: N/A  
 MAP PAGE(S): 11-00-036  
 APPROVED BY: RRM DATE: 7-31-19  
 SCALE: 1" = 50' PRIOR INSTRUMENT: 20180697553