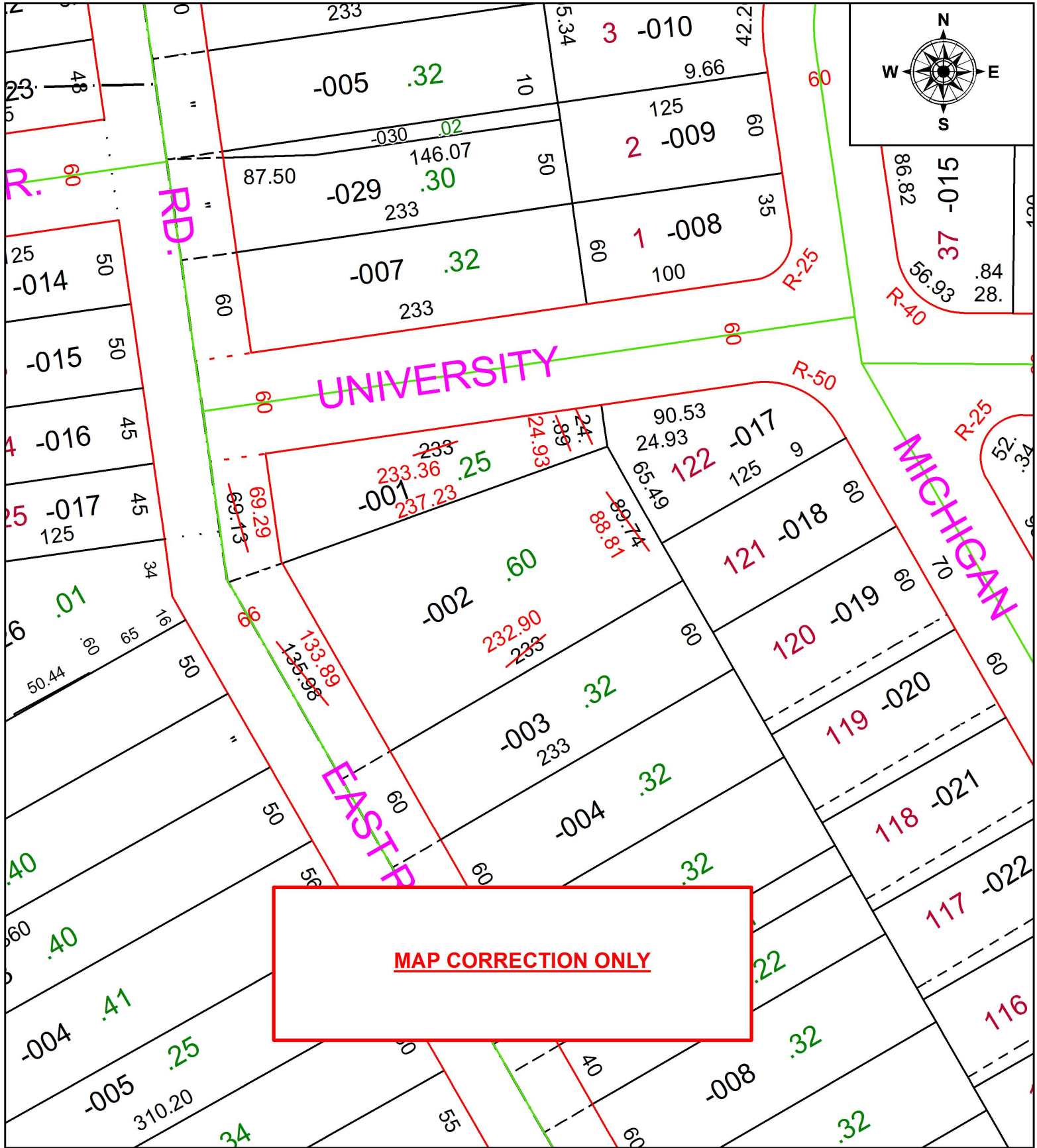


PARENT PARCEL: 06-25-003-103-001, -002

CHILD PARCEL:

STARTING POINT: INTERSECTION OF C/L OF UNIVERSITY AVE. AND C/L OF EAST RIVER ST.

19-04163-D



**MAP CORRECTION ONLY**



**SPLITS/DEEDS PROCESSED**  
 LORAIN COUNTY TAX MAP DEPARTMENT  
 226 MIDDLE AVE. ELYRIA, OH

SURVEYED BY: THOMAS A. SIMON  
 CLOSURE: 1:85,037  
 MAP PAGE(S): 6-25-003  
 APPROVED BY: RRM DATE: 7-31-19  
 SCALE: 1" = 75' PRIOR INSTRUMENT: 20180678672