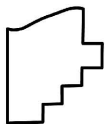
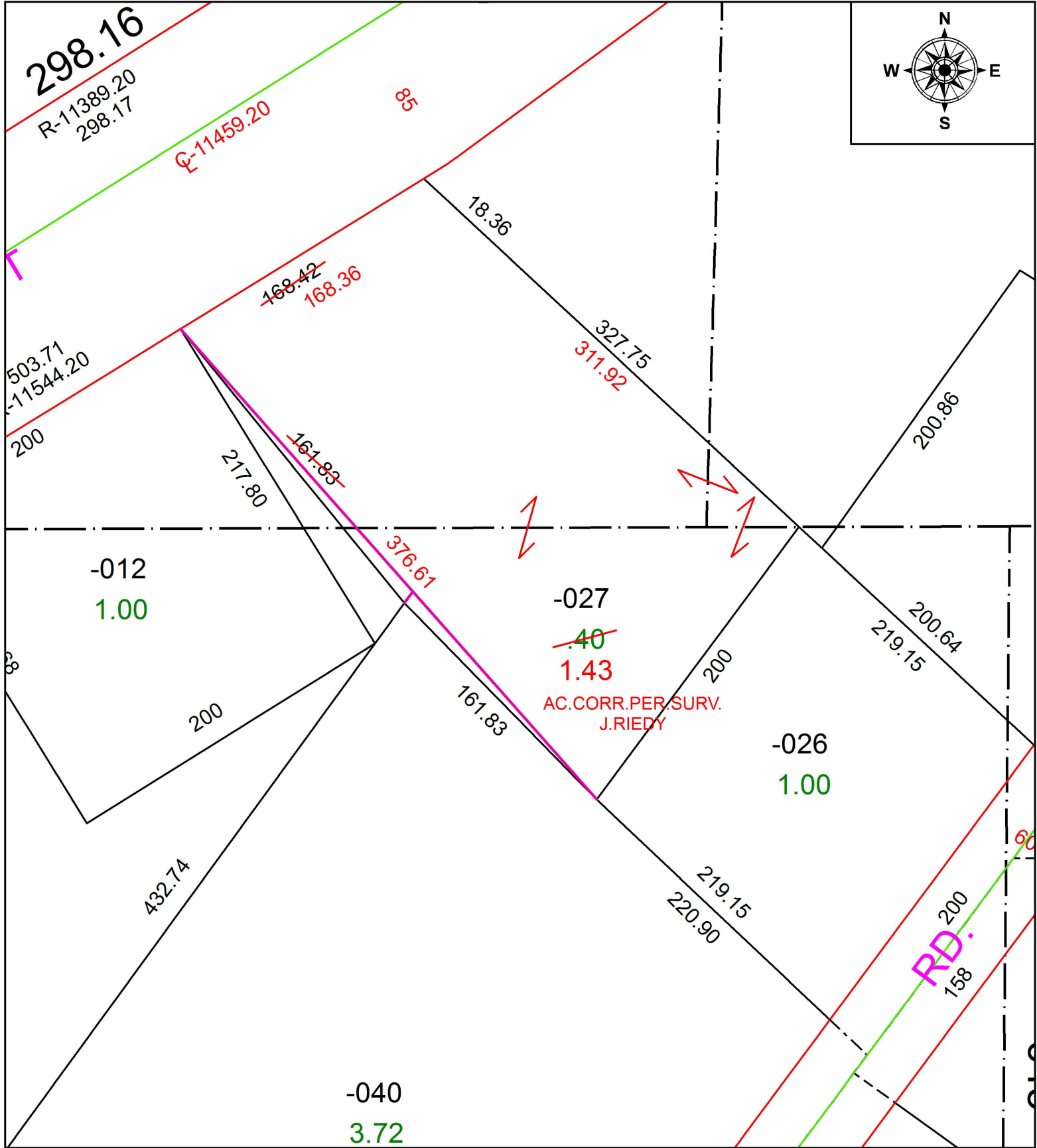


PARENT PARCEL: 14-00-017-000-027

CHILD PARCEL:

STARTING POINT: INTERSECTION OF C/L OF KIPTON NICKLE PLATE RD. AND C/L OF HALLAUER RD.

19-04159-C



SPLITS/DEEDS PROCESSED
 LORAIN COUNTY TAX MAP DEPARTMENT
 226 MIDDLE AVE. ELYRIA, OH

SURVEYED BY: JOSHUA S. RIEDY
 CLOSURE: 1:128,188
 MAP PAGE(S): 14-00-017
 APPROVED BY: RRM DATE: 7-25-19
 SCALE: 1" = 75' PRIOR INSTRUMENT: 20060166835