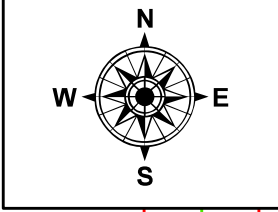
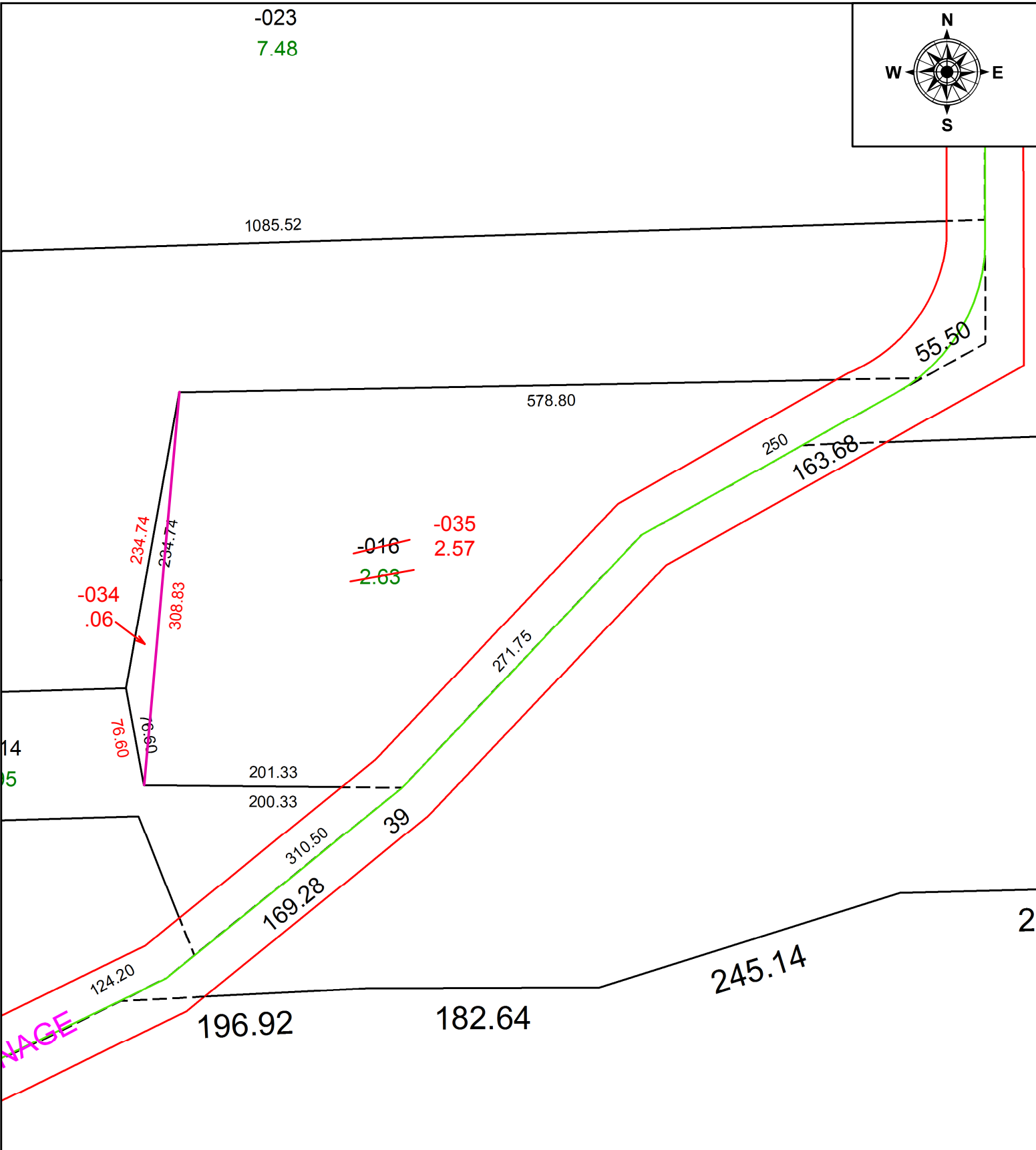
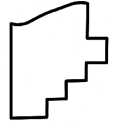


PARENT PARCEL: 01-00-066-000-016  
 CHILD PARCEL: 01-00-066-000-034, -035  
 STARTING POINT: INTERSECTION OF NORTH LINE OF O.L.66 AND C/L OF GORE ORPHANAGE RD.

20-04158



 **SPLITS/DEEDS PROCESSED**  
 LORAIN COUNTY TAX MAP DEPARTMENT  
 226 MIDDLE AVE. ELYRIA, OH

SURVEYED BY: DAVID A. WILLIAMS  
 CLOSURE: 1:245,590  
 MAP PAGE(S): 1-00-066  
 APPROVED BY: RRM DATE: 9-9-20  
 SCALE: 1" = 100 PRIORITY INSTRUMENT: 20200755856