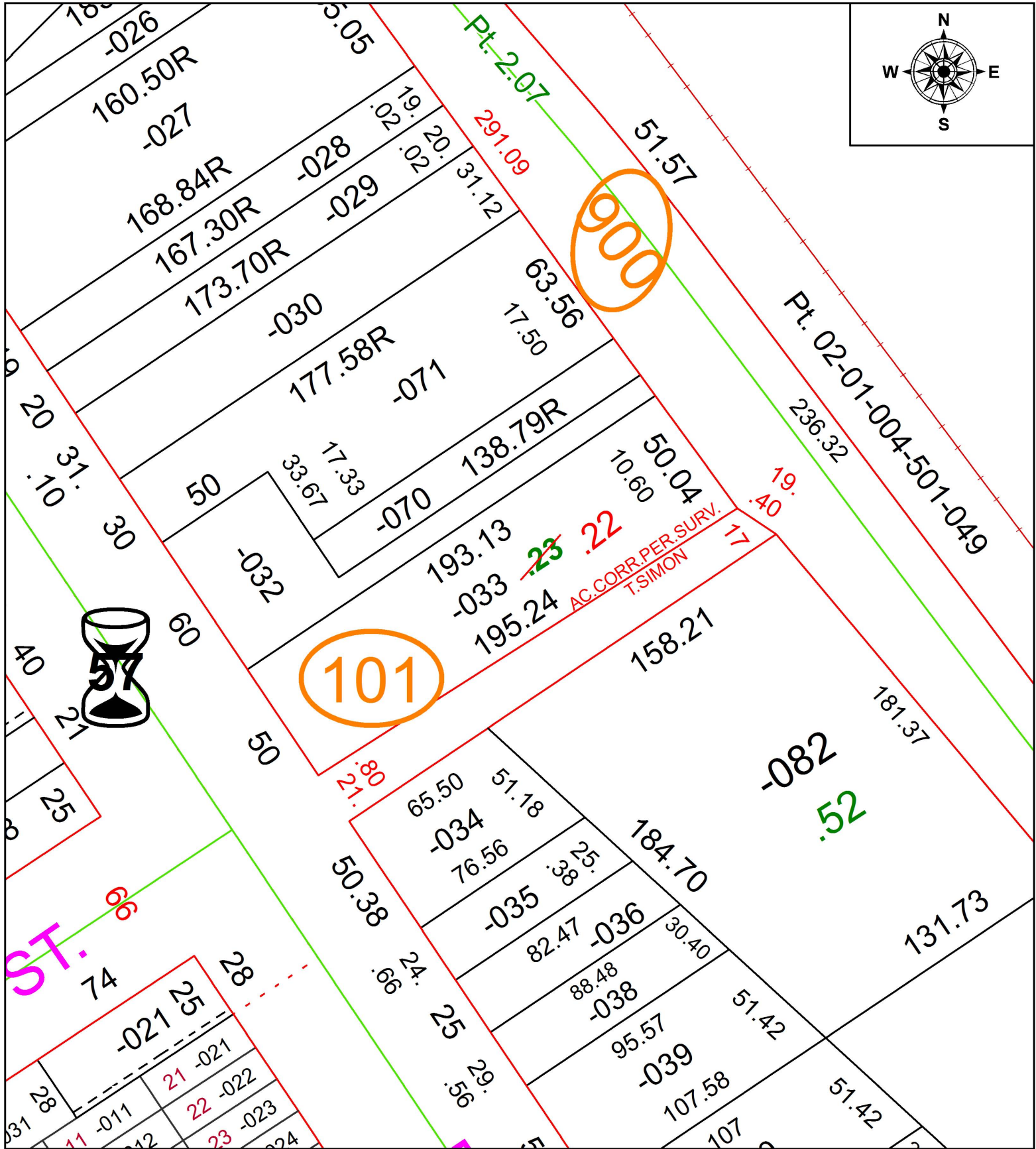
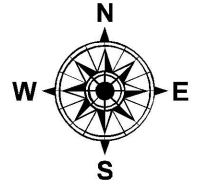


PARENT PARCEL: 02-01-004-101-033

CHILD PARCEL:

STARTING POINT: INTERSECTION OF C/L OF W. 6TH ST. AND C/L OF BROADWAY

19-04158-A



SPLITS/DEEDS PROCESSED

LORAIN COUNTY TAX MAP DEPARTMENT
226 MIDDLE AVE. ELYRIA, OH

SURVEYED BY: THOMAS A. SIMON

CLOSURE: 1:106,915

MAP PAGE(S): 2-01-004

APPROVED BY: RRM DATE: 7-23-19

SCALE: 1" = 50 PRIOR INSTRUMENT: 20190717983