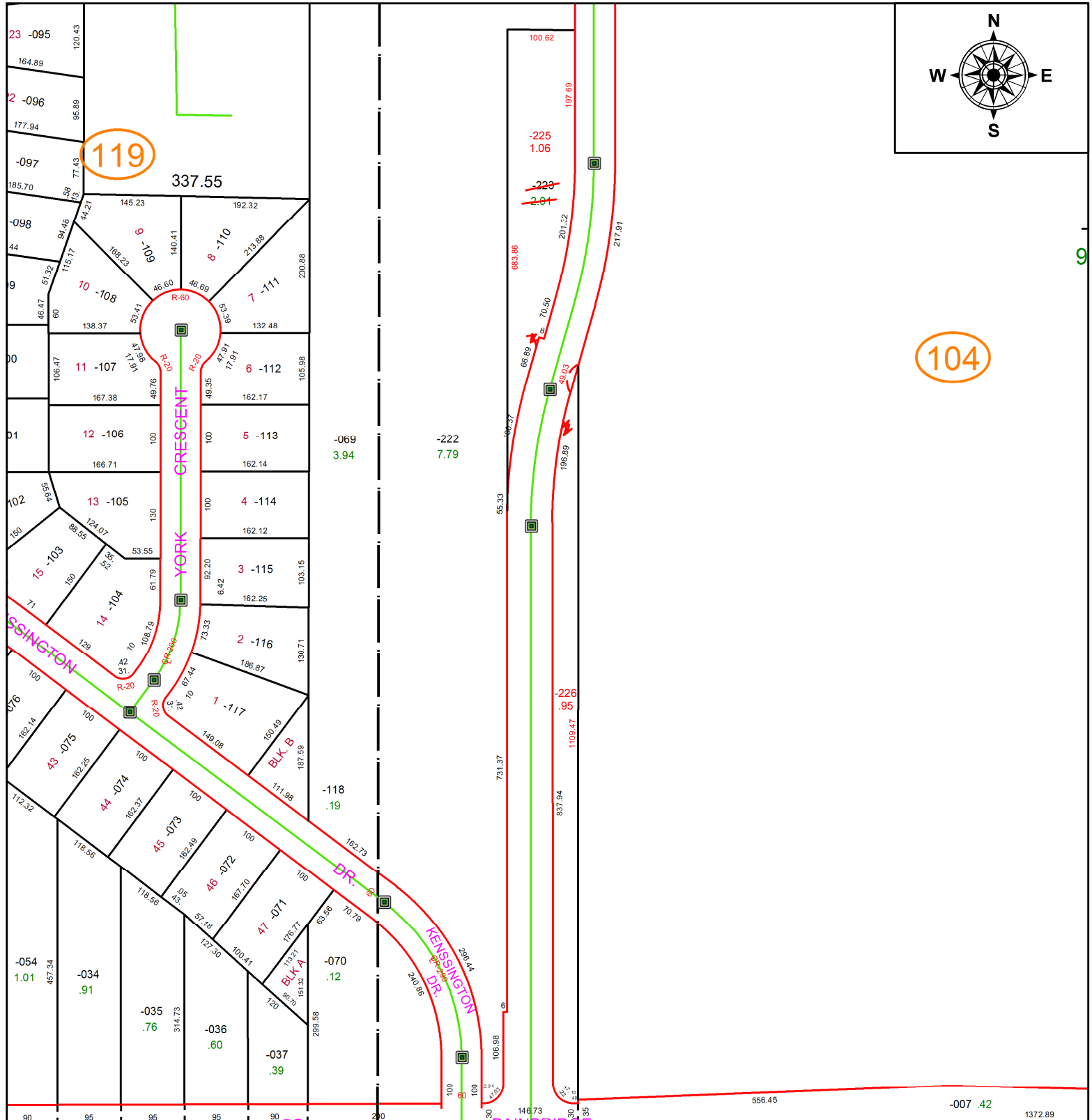
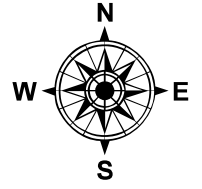


PARENT PARCEL: 07-00-016-104-223

CHILD PARCEL: 07-00-016-104-225, -226

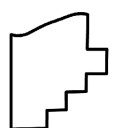
STARTING POINT: INTERSECTION OF C/L OF KENSINGTON RD. AND C/L OF BAINBRIDGE RD.

20-04157



119

104



SPLITS/DEEDS PROCESSED
LORAIN COUNTY TAX MAP DEPARTMENT
226 MIDDLE AVE. ELYRIA, OH

SURVEYED BY: TREVOR A. BIXLER
CLOSURE: 1:579,022
MAP PAGE(S): 7-00-016
APPROVED BY: RRM **DATE:** 8-5-20
SCALE: 1" = 200 **PRIOR INSTRUMENT:** 20140510874