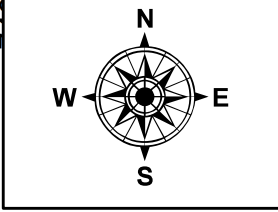
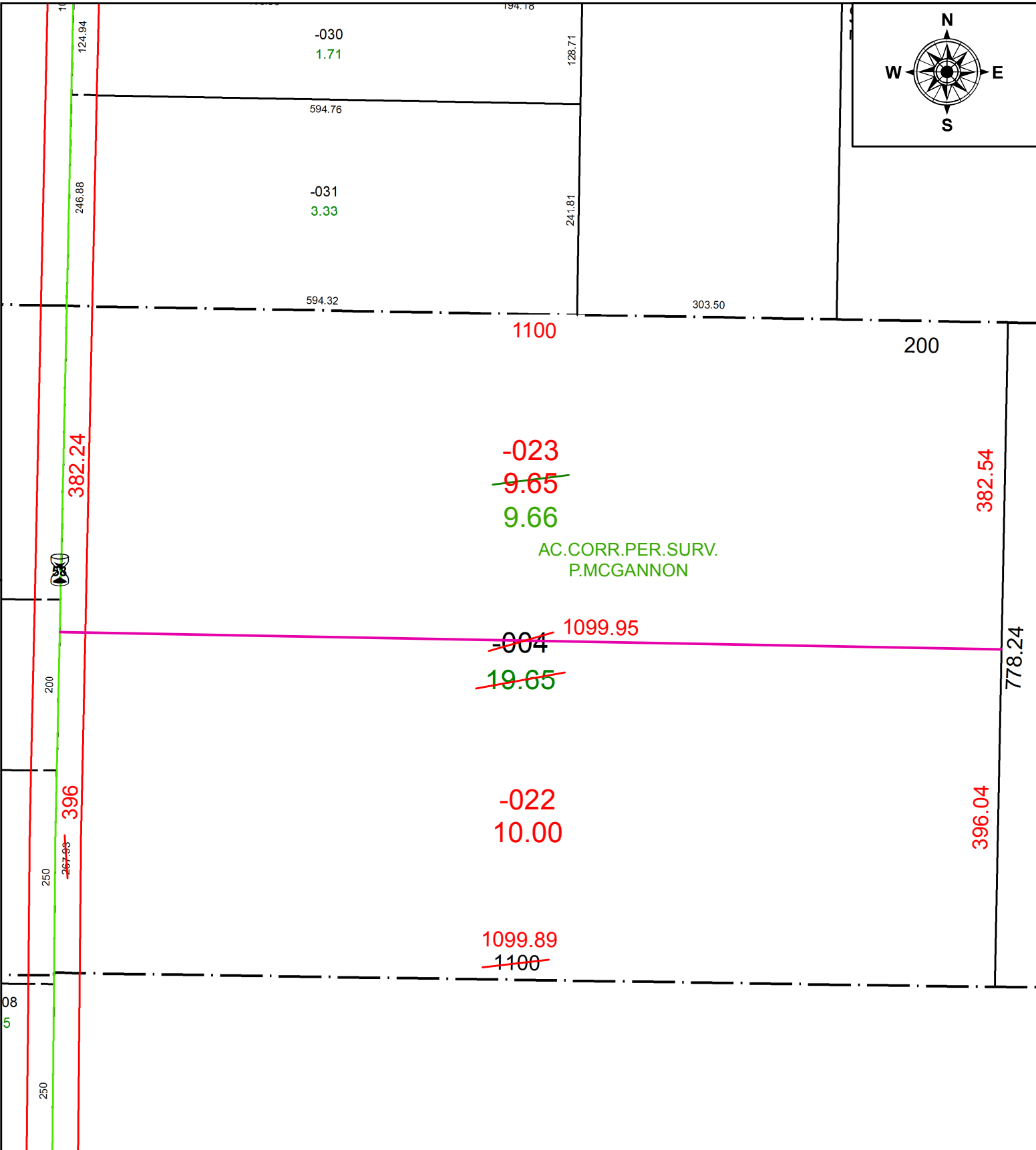
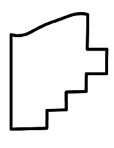


PARENT PARCEL: 21-08-011-000-004
 CHILD PARCEL: 21-08-011-000-022, -023
 STARTING POINT: INTERSECTION OF C/L OF S.R. 58 AND C/L OF NEW LONDON EASTERN RD.

20-04156



 **SPLITS/DEEDS PROCESSED**
 LORAIN COUNTY TAX MAP DEPARTMENT
 226 MIDDLE AVE. ELYRIA, OH

SURVEYED BY: PATRICK A, MCGANNON
 CLOSURE: 1:436,464
 MAP PAGE(S): 21-08-011
 APPROVED BY: RRM DATE: 7-31-20
 SCALE: 1" = 150 PRIOR INSTRUMENT: 20180694725