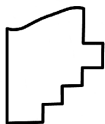
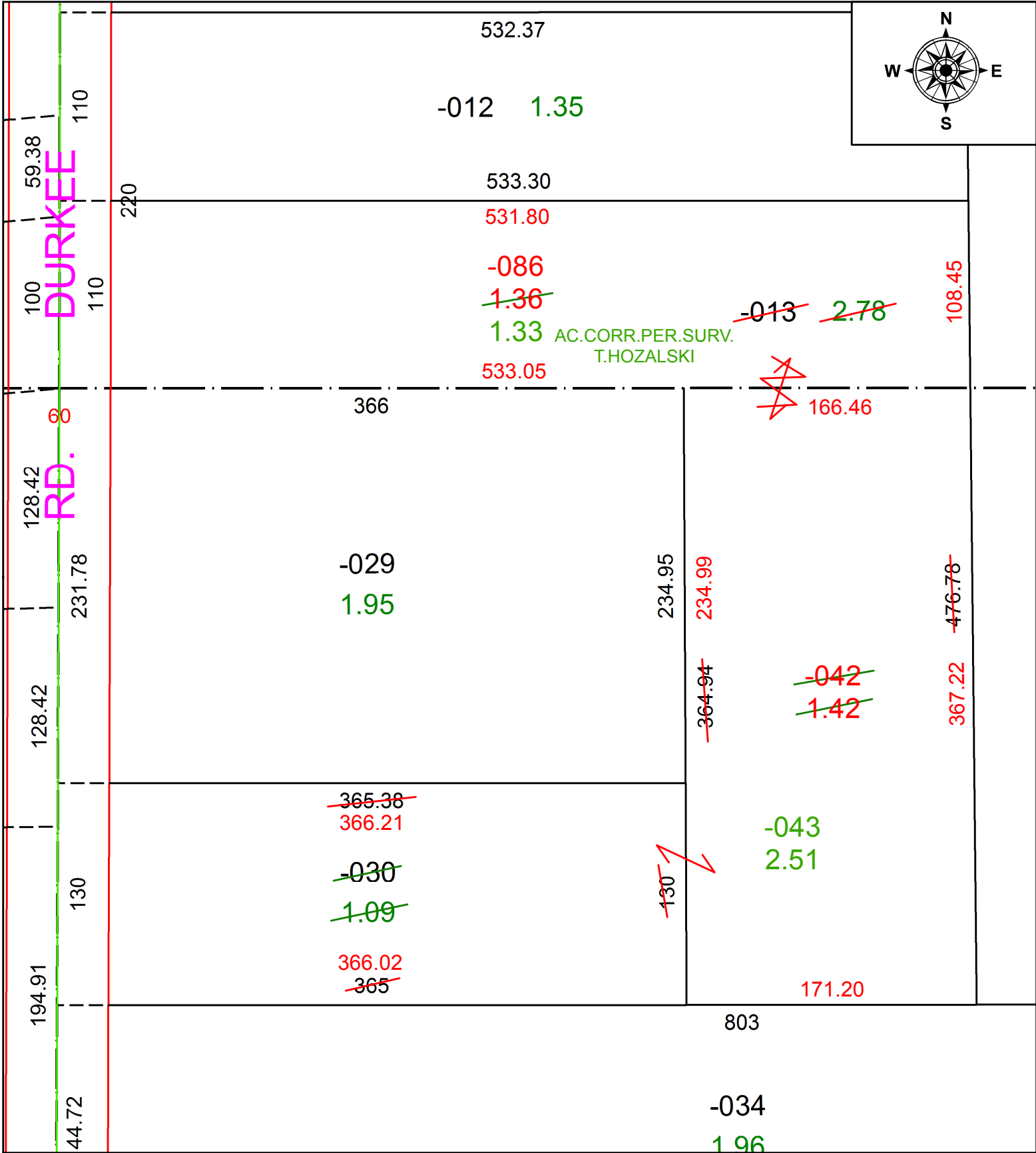


PARENT PARCEL: 11-00-072-000-013, 11-00-073-000-030  
 CHILD PARCEL: 11-00-072-000-086, 11-00-073-000-042, -043  
 STARTING POINT: SOUTHWEST CORNER OF O.L.72

20-04152



**SPLITS/DEEDS PROCESSED**  
 LORAIN COUNTY TAX MAP DEPARTMENT  
 226 MIDDLE AVE. ELYRIA, OH

SURVEYED BY: TIMOTHY D. HOZALSKI  
 CLOSURE: 1:172,794  
 MAP PAGE(S): 11-00-073  
 APPROVED BY: RRM DATE: 7-27-20  
 SCALE: 1" = 75' PRIOR INSTRUMENT: DV 1365/201