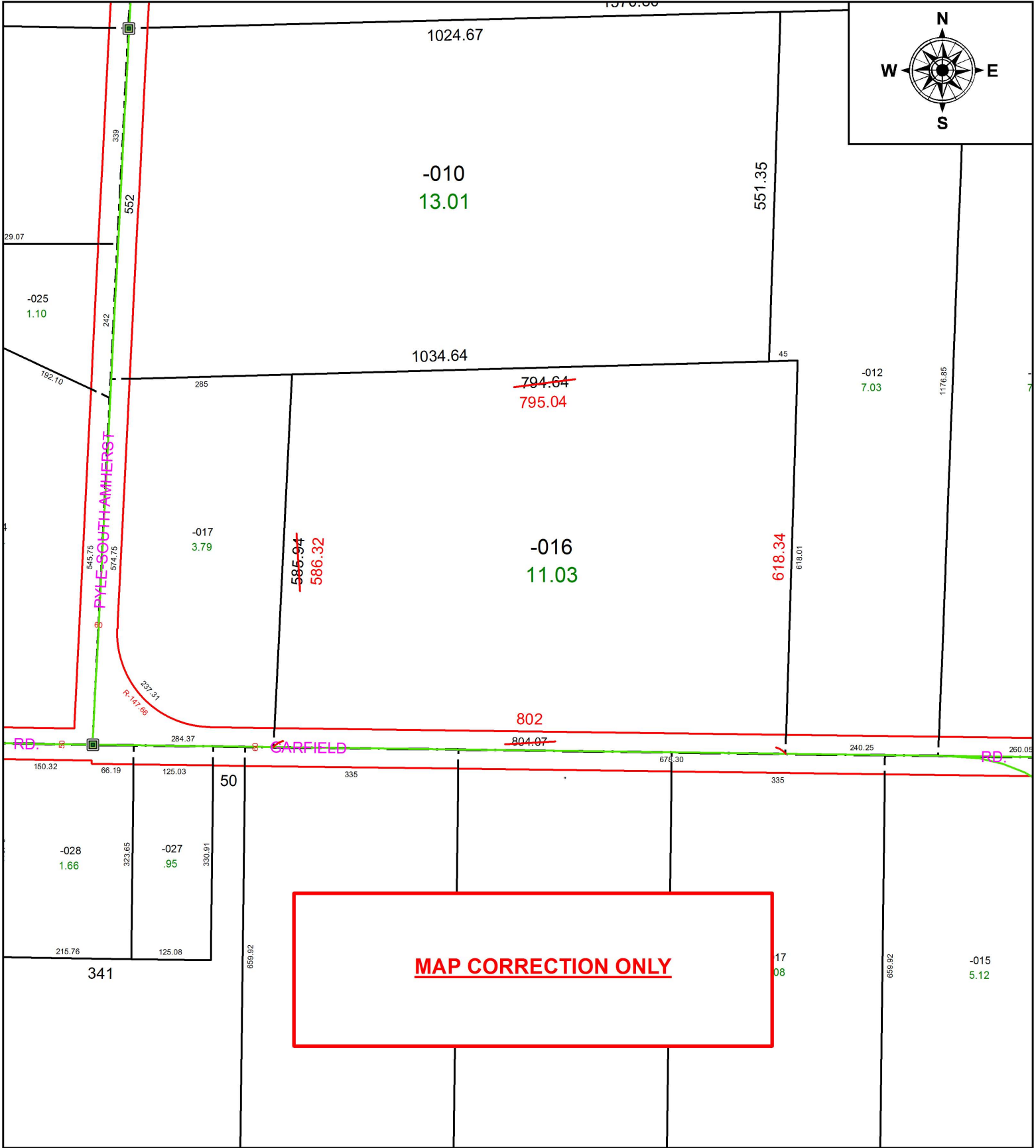


PARENT PARCEL: 09-00-043-000-016

CHILD PARCEL:

STARTING POINT: INTERSECTION OF C/L OF PLYE SOUTH AMHERST RD.(EAST) AND C/L OF PYLE SOUTH AMHERST RD. (NORTH)

19-04150-D



MAP CORRECTION ONLY



SPLITS/DEEDS PROCESSED
LORAIN COUNTY TAX MAP DEPARTMENT
226 MIDDLE AVE. ELYRIA, OH

SURVEYED BY:	THOMAS A. SIMON
CLOSURE:	1:326,703
MAP PAGE(S):	9-00-043
APPROVED BY:	RRM DATE: 7-22-19
SCALE:	1" = 200 PRIOR INSTRUMENT: 20160593850