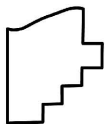
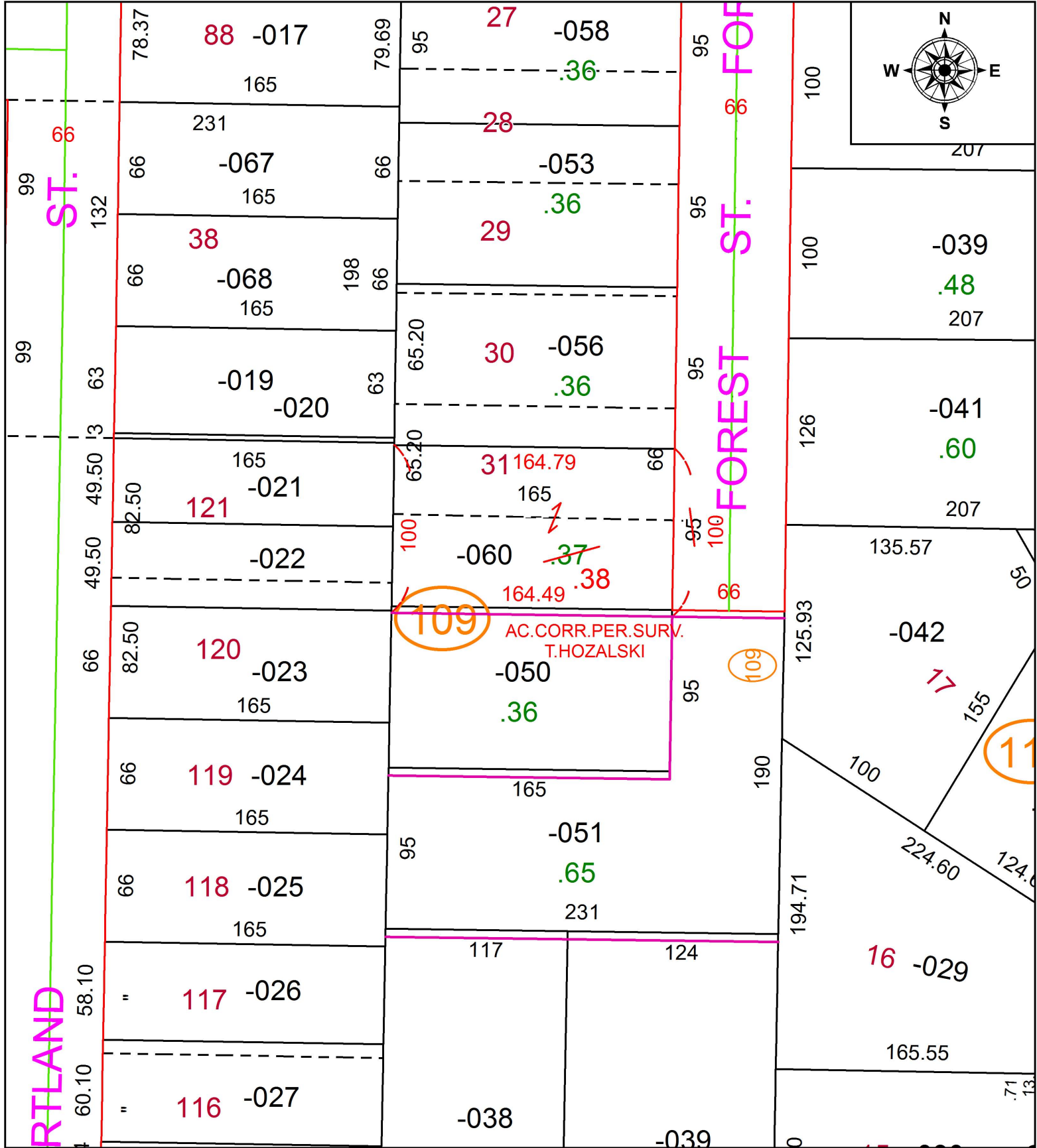


PARENT PARCEL: 18-00-022-109-060

CHILD PARCEL:

STARTING POINT: SOUTHWEST CORNER OF FOREST ST.

19-04148-C



**SPLITS/DEEDS PROCESSED**  
 LORAIN COUNTY TAX MAP DEPARTMENT  
 226 MIDDLE AVE. ELYRIA, OH

SURVEYED BY: TIMOTHY D. HOZALSKI

CLOSURE: 1:405,123

MAP PAGE(S): 18-00-022

APPROVED BY: RRM DATE: 7-19-19

SCALE: 1" = 75' PRIOR INSTRUMENT: 20180689366