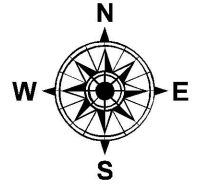
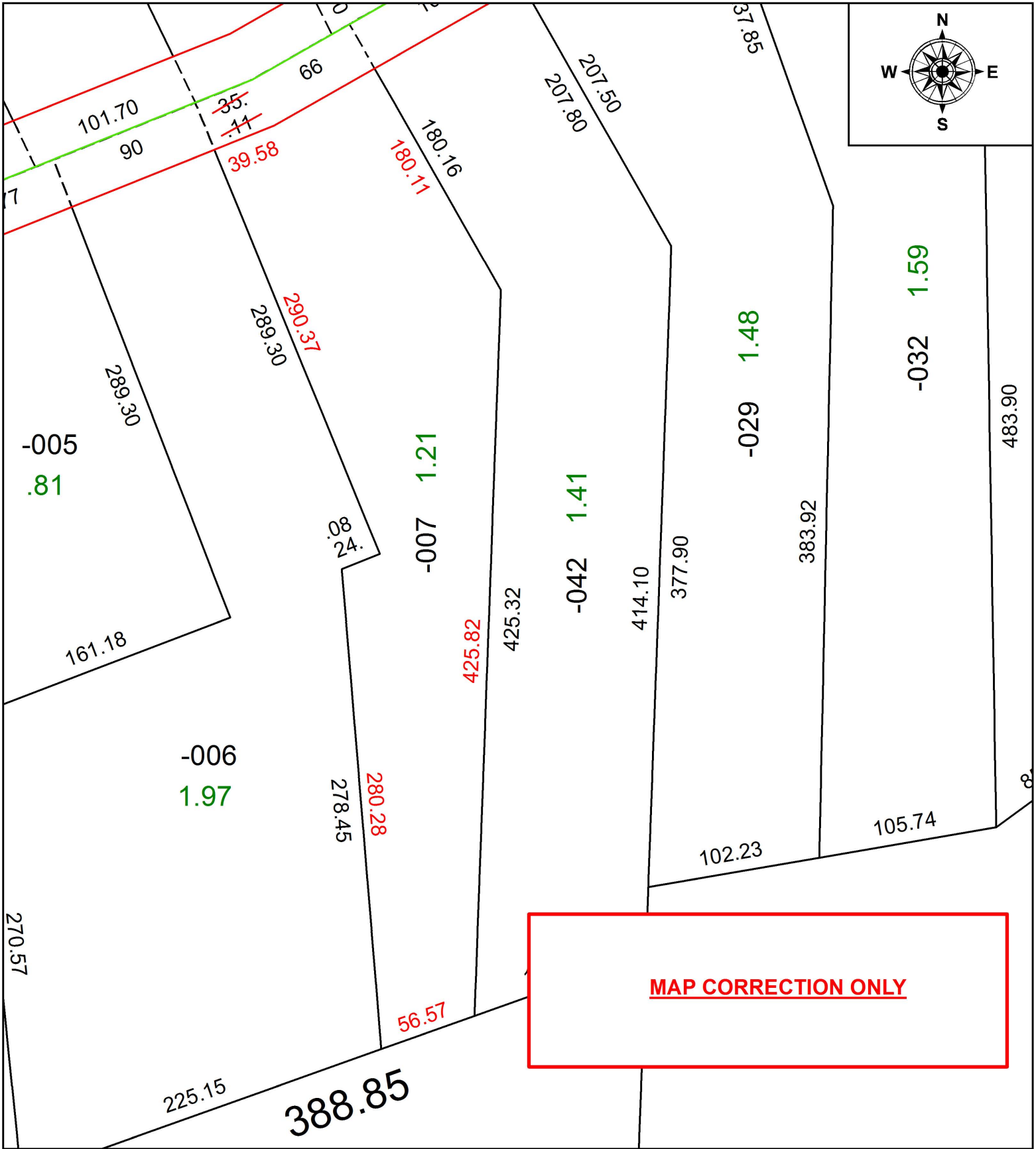


PARENT PARCEL: 05-00-078-000-007

CHILD PARCEL:

STARTING POINT: INTERSECTION OF C/L OF MIDDLE RIDGE RD. AND WEST LINE OF O.L.78

19-04145-D



**MAP CORRECTION ONLY**



**SPLITS/DEEDS PROCESSED**  
 LORAIN COUNTY TAX MAP DEPARTMENT  
 226 MIDDLE AVE. ELYRIA, OH

SURVEYED BY: THOMAS A. SIMON  
 CLOSURE: 1:124,659  
 MAP PAGE(S): 5-00-078  
 APPROVED BY: RRM DATE: 7-18-19  
 SCALE: 1" = 75' PRIOR INSTRUMENT: 20180666203