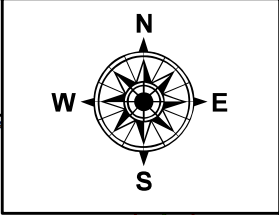


PARENT PARCEL: 15-00-023-000-002

CHILD PARCEL: 15-00-023-000-028, -029

STARTING POINT: NORTHEAST CORNER OF O.L.23

20-04144



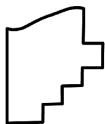
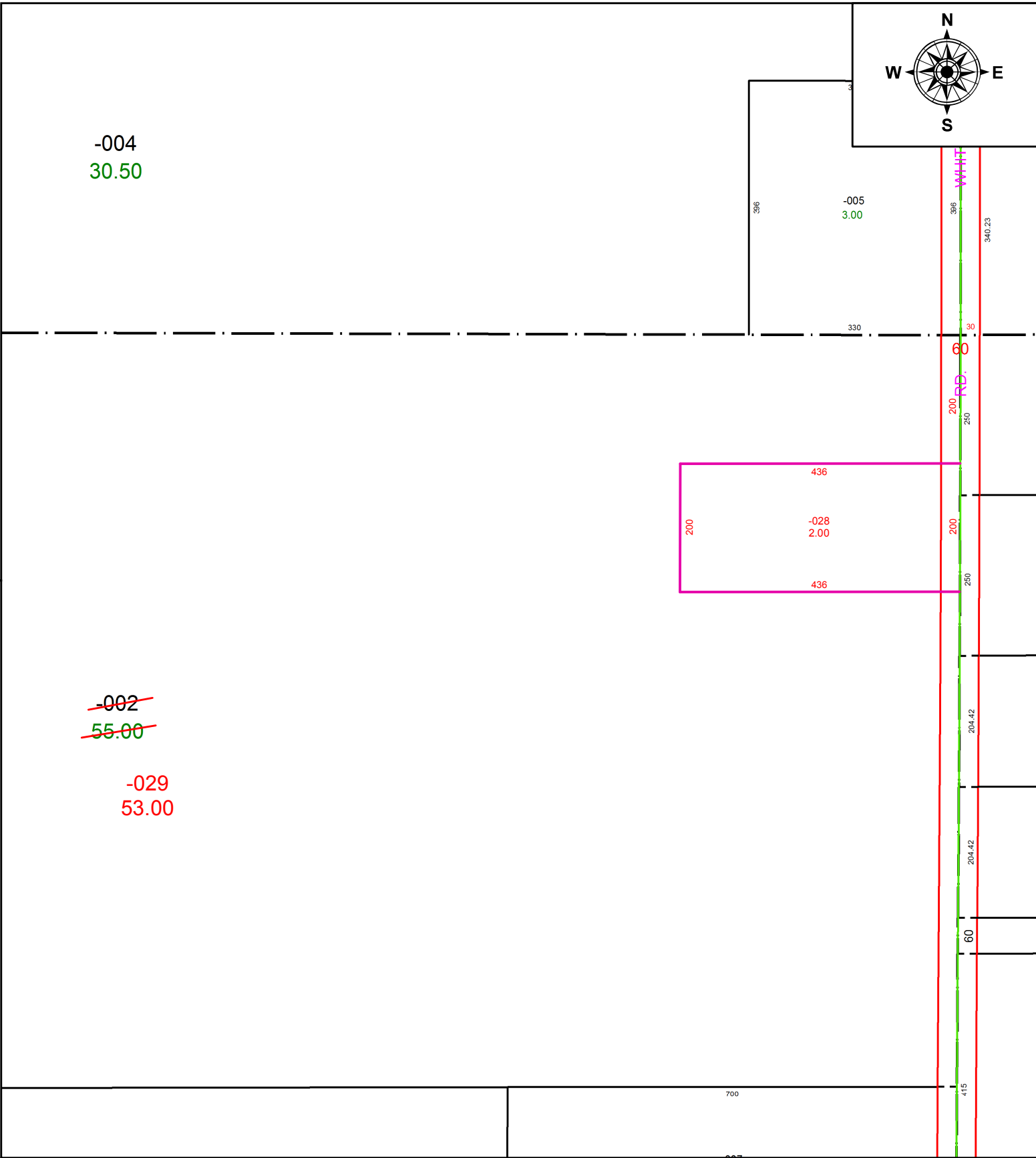
-004
30.50

-005
3.00

~~-002~~
~~55.00~~

-029
53.00

436
-028
2.00
436



SPLITS/DEEDS PROCESSED
LORAIN COUNTY TAX MAP DEPARTMENT
226 MIDDLE AVE. ELYRIA, OH

SURVEYED BY: THOMAS A. SIMON
CLOSURE: 1:2147483648
MAP PAGE(S): 15-00-023
APPROVED BY: RRM DATE: 7-9-20
SCALE: 1" = 200 PRIOR INSTRUMENT: 20170647364