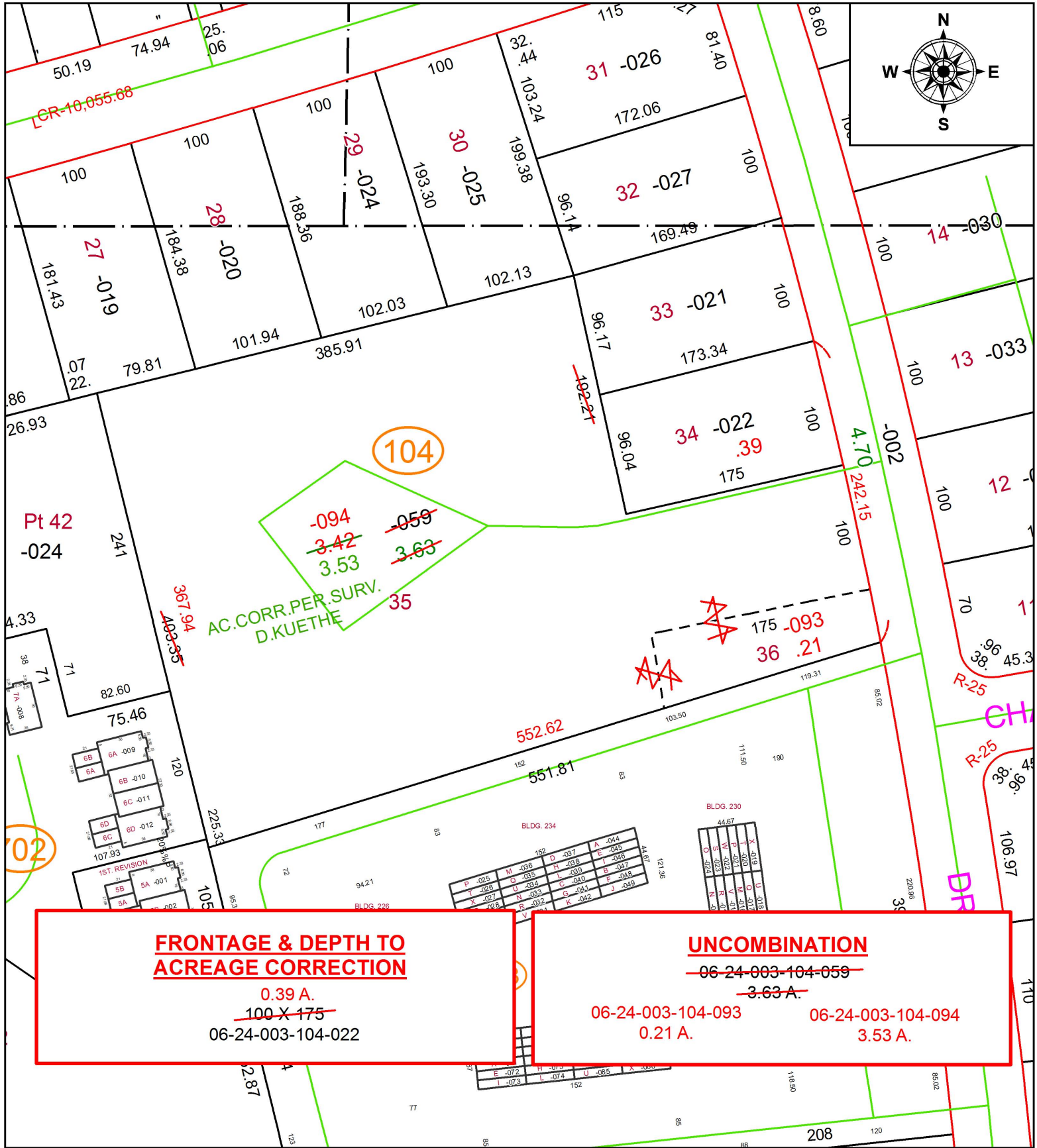


PARENT PARCEL: 06-24-003-104-022, -059

CHILD PARCEL: 06-24-003-104-022, -093, -094

STARTING POINT: NORTHEAST CORNER OF S/L 34 IN WEST RIDGE ESTATES SUB. NO.2

19-04142-D



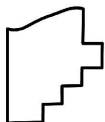
**FRONTAGE & DEPTH TO  
ACREAGE CORRECTION**

0.39 A.  
~~100 X 175~~  
06-24-003-104-022

**UNCOMBINATION**

~~06-24-003-104-059~~  
~~3.63 A.~~  
06-24-003-104-093      06-24-003-104-094  
0.21 A.                      3.53 A.

P	-025	M	-036	D	-037	A	-044
T	-026	U	-035	H	-036	E	-045
X	-027	N	-034	L	-039	B	-047
Y	-028	R	-033	G	-040	F	-048
Z	-029	S	-032	K	-042	J	-049
AA	-030	V	-031				



**SPLITS/DEEDS PROCESSED**  
LORAIN COUNTY TAX MAP DEPARTMENT  
226 MIDDLE AVE. ELYRIA, OH

SURVEYED BY: DAVID J. KUETHE  
CLOSURE: 1:8,588,890  
MAP PAGE(S): 6-24-003  
APPROVED BY: RRM DATE: 7-15-19  
SCALE: 1" = 100 PRIOR INSTRUMENT: DV 1307/506