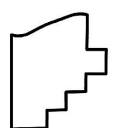
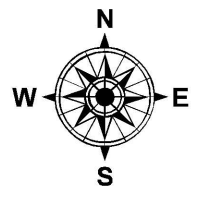
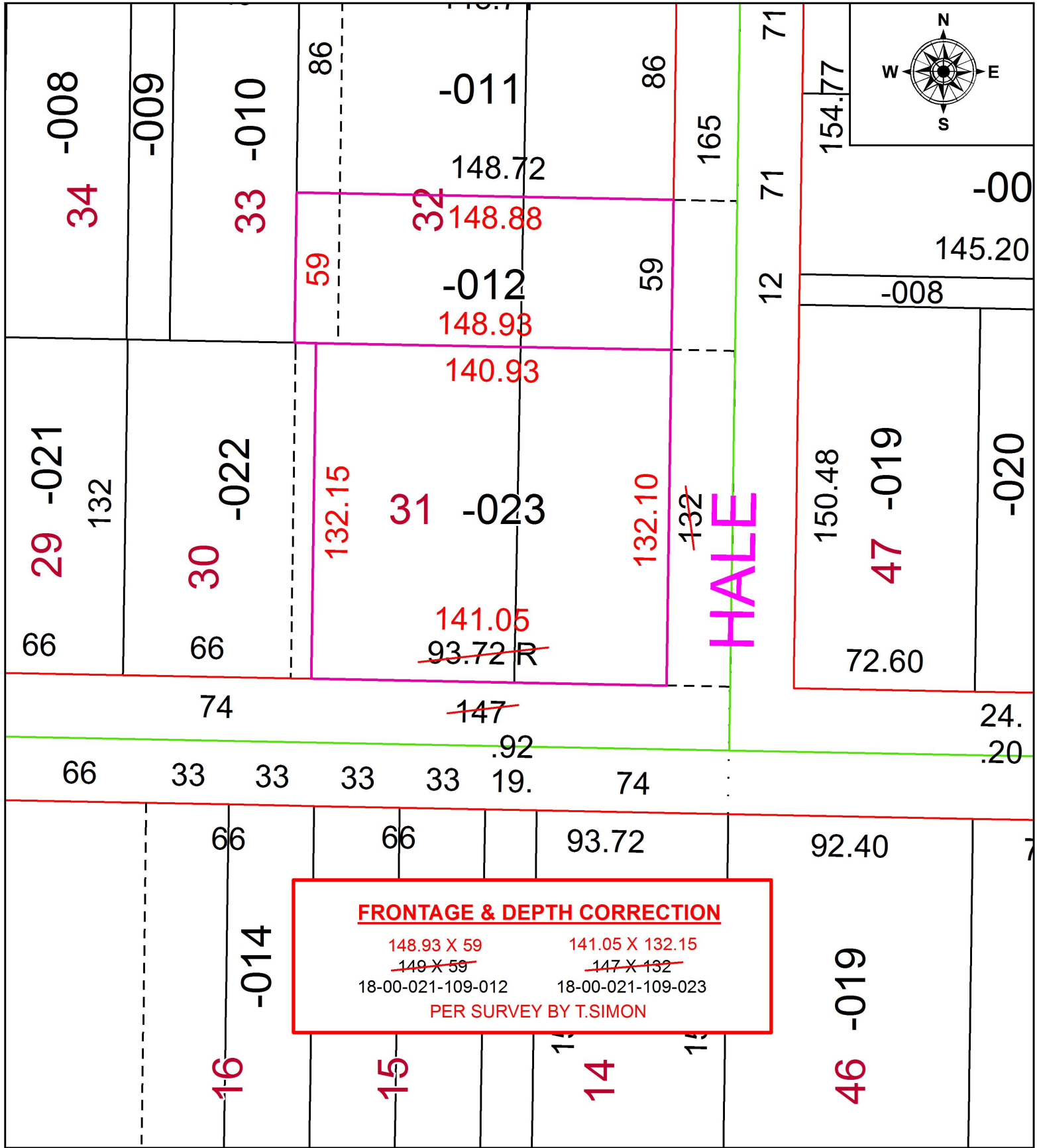


PARENT PARCEL: 18-00-021-109-012, -023

CHILD PARCEL:

STARTING POINT: INTERSECTION OF C/L OF TAYLOR ST. AND C/L OF HALE ST.

19-04140-D



SPLITS/DEEDS PROCESSED
 LORAIN COUNTY TAX MAP DEPARTMENT
 226 MIDDLE AVE. ELYRIA, OH

SURVEYED BY: THOMAS A. SIMON
 CLOSURE: 1:84,920
 MAP PAGE(S): 18-00-021
 APPROVED BY: RRM DATE: 7-12-19
 SCALE: 1" = 50' PRIOR INSTRUMENT: 20120406295