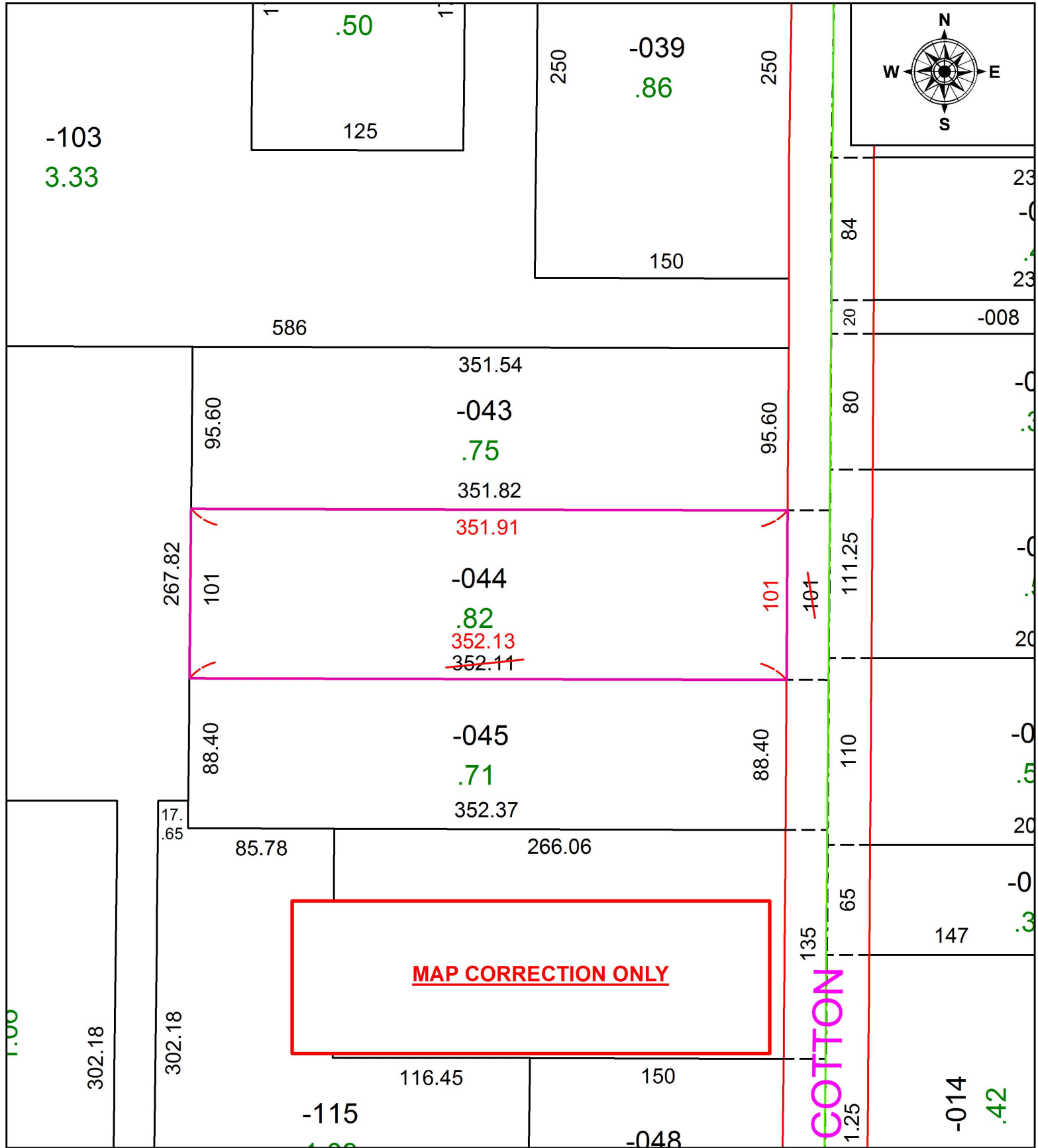


PARENT PARCEL: 03-00-113-104-044

CHILD PARCEL:

STARTING POINT: INTERSECTION OF C/L OF BROADWAY AND C/L OF COOPER FOSTER PARK RD.

19-04137-D



**SPLITS/DEEDS PROCESSED**  
LORAIN COUNTY TAX MAP DEPARTMENT  
226 MIDDLE AVE. ELYRIA, OH

SURVEYED BY: PATRICK A. MCGANNON

CLOSURE: 1:95,008

MAP PAGE(S): 3-00-113

APPROVED BY: RRM DATE: 7-11-19

SCALE: 1" = 75' PRIOR INSTRUMENT: 20190712012