

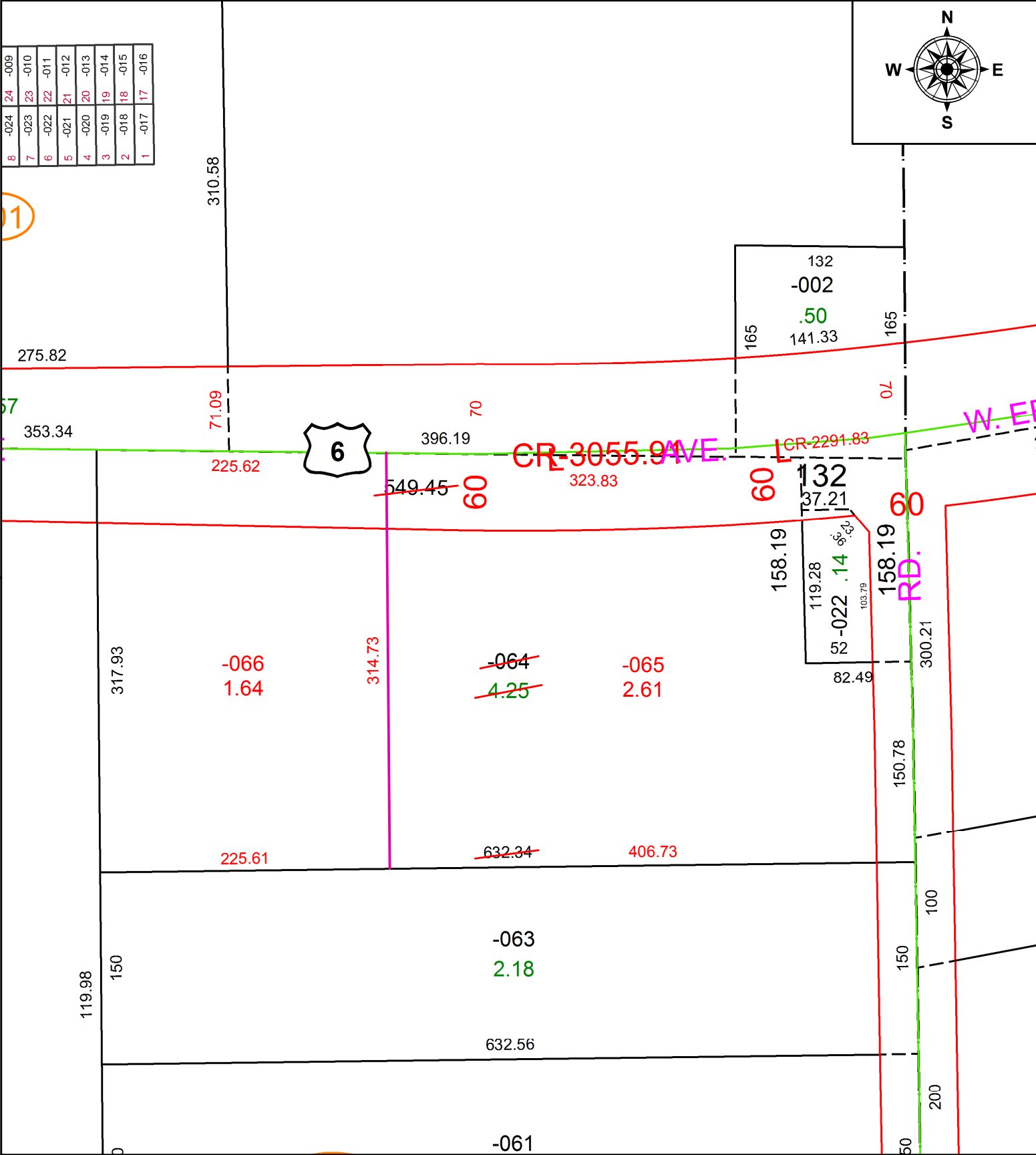
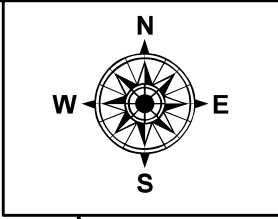
PARENT PARCEL: 01-00-004-120-064

CHILD PARCEL: 01-00-004-120-065, -066

STARTING POINT: INTERSECTION OF C/L OF ROANOKE DR. AND C/L OF SUNNYSIDE RD.

20-04136

8	-024	24	-009
7	-023	23	-010
6	-022	22	-011
5	-021	21	-012
4	-020	20	-013
3	-019	19	-014
2	-018	18	-015
1	-017	17	-016



SPLITS/DEEDS PROCESSED
 LORAIN COUNTY TAX MAP DEPARTMENT
 226 MIDDLE AVE. ELYRIA, OH

SURVEYED BY: ALEX E. MARKS
 CLOSURE: 1:199,283
 MAP PAGE(S): 1-00-004
 APPROVED BY: RRM DATE: 6-15-20
 SCALE: 1" = 100 PRIOR INSTRUMENT: 20190713527