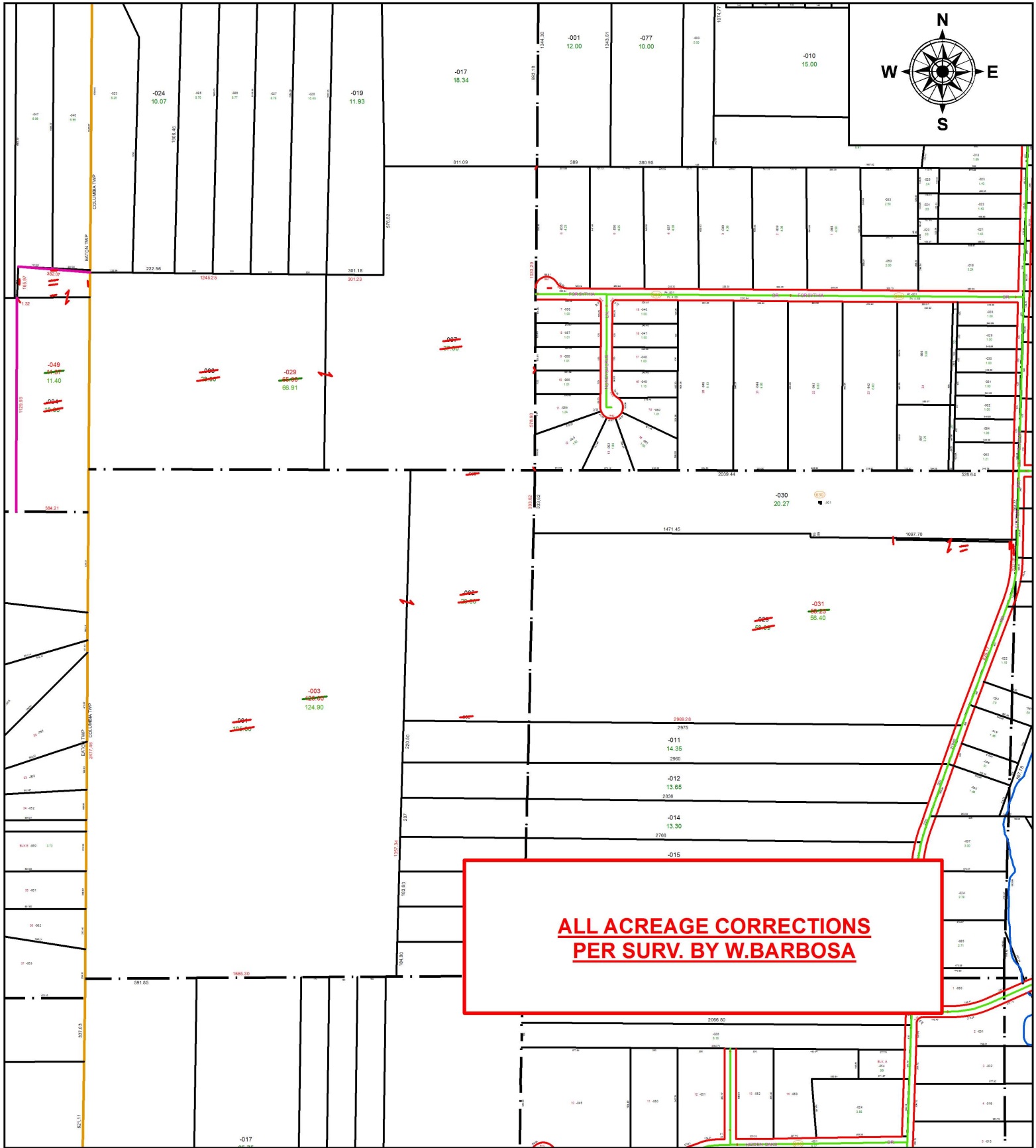


PARENT PARCEL: 11-00-003-000-004, -016, 12-00-089-000-026, -029, 12-00-092-000-001, -002, 12-00-093-000-006, -007

CHILD PARCEL: 11-00-003-000-049, 12-00-089-000-031, 12-00-092-000-003, 12-00-093-000-029

STARTING POINT: INTERSECTION OF C/L OF AKINS RD. AND C/L OF STATION RD.

19-04135-C



SPLITS/DEEDS PROCESSED
 LORAIN COUNTY TAX MAP DEPARTMENT
 226 MIDDLE AVE. ELYRIA, OH

SURVEYED BY: WILFREDO BARBOSA
 CLOSURE: 1:510,858
 MAP PAGE(S): 12-00-089
 APPROVED BY: RRM DATE: 7-8-19
 SCALE: 1" = 675 PRIOR INSTRUMENT: 20190708913