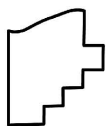
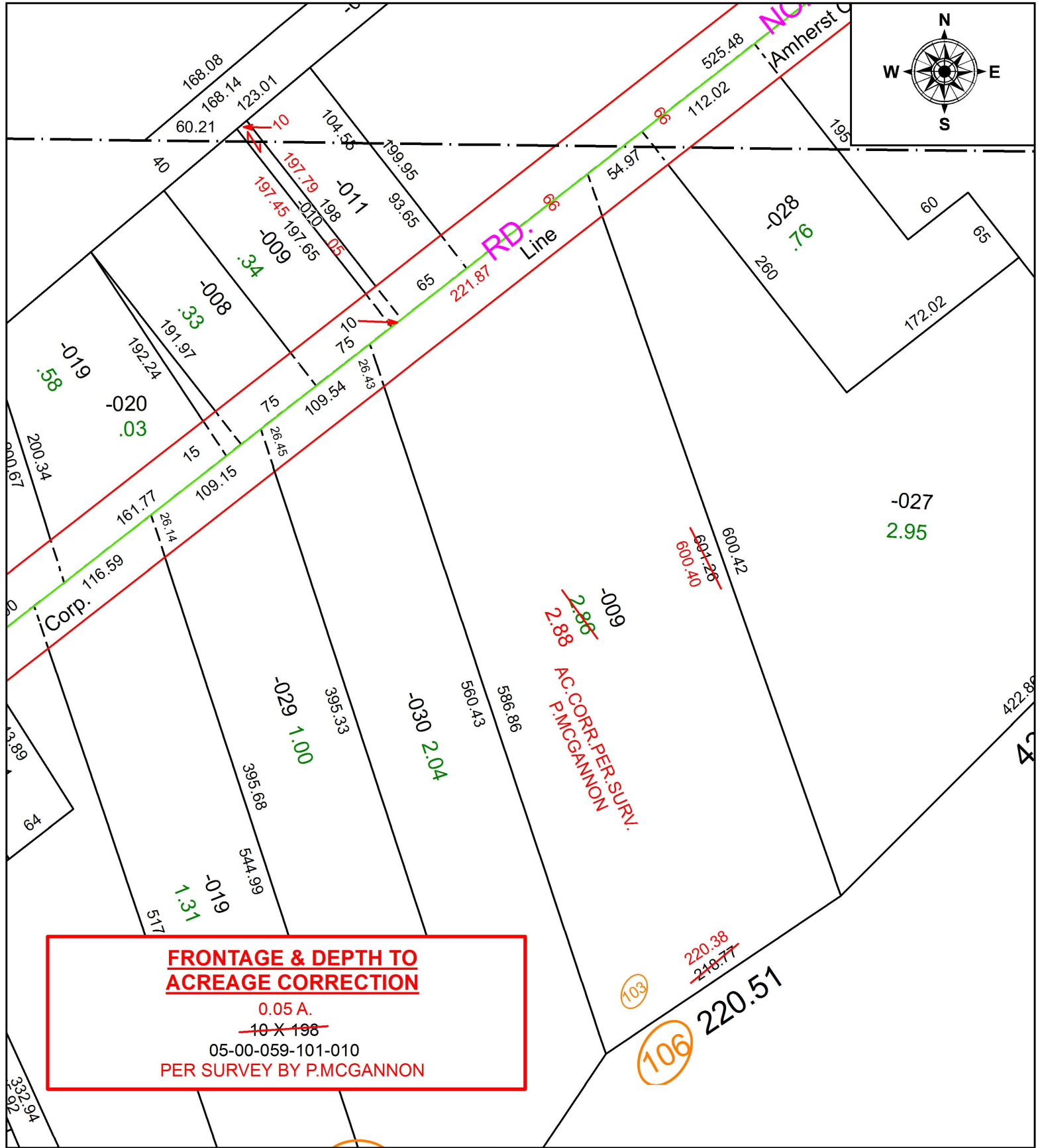


PARENT PARCEL: 05-00-059-101-010, 05-00-059-103-009

CHILD PARCEL:

STARTING POINT: INTERSECTION OF C/L OF NORTH RIDGE RD. AND SOUTH LINE OF I-90

19-04134-A



SPLITS/DEEDS PROCESSED
LORAIN COUNTY TAX MAP DEPARTMENT
226 MIDDLE AVE. ELYRIA, OH

SURVEYED BY: PATRICK A. MCGANNON

CLOSURE: 1:251,968

MAP PAGE(S): 5-00-059

APPROVED BY: RRM DATE: 7-5-19

SCALE: 1" = 100 PRIOR INSTRUMENT: 20070236246