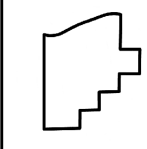
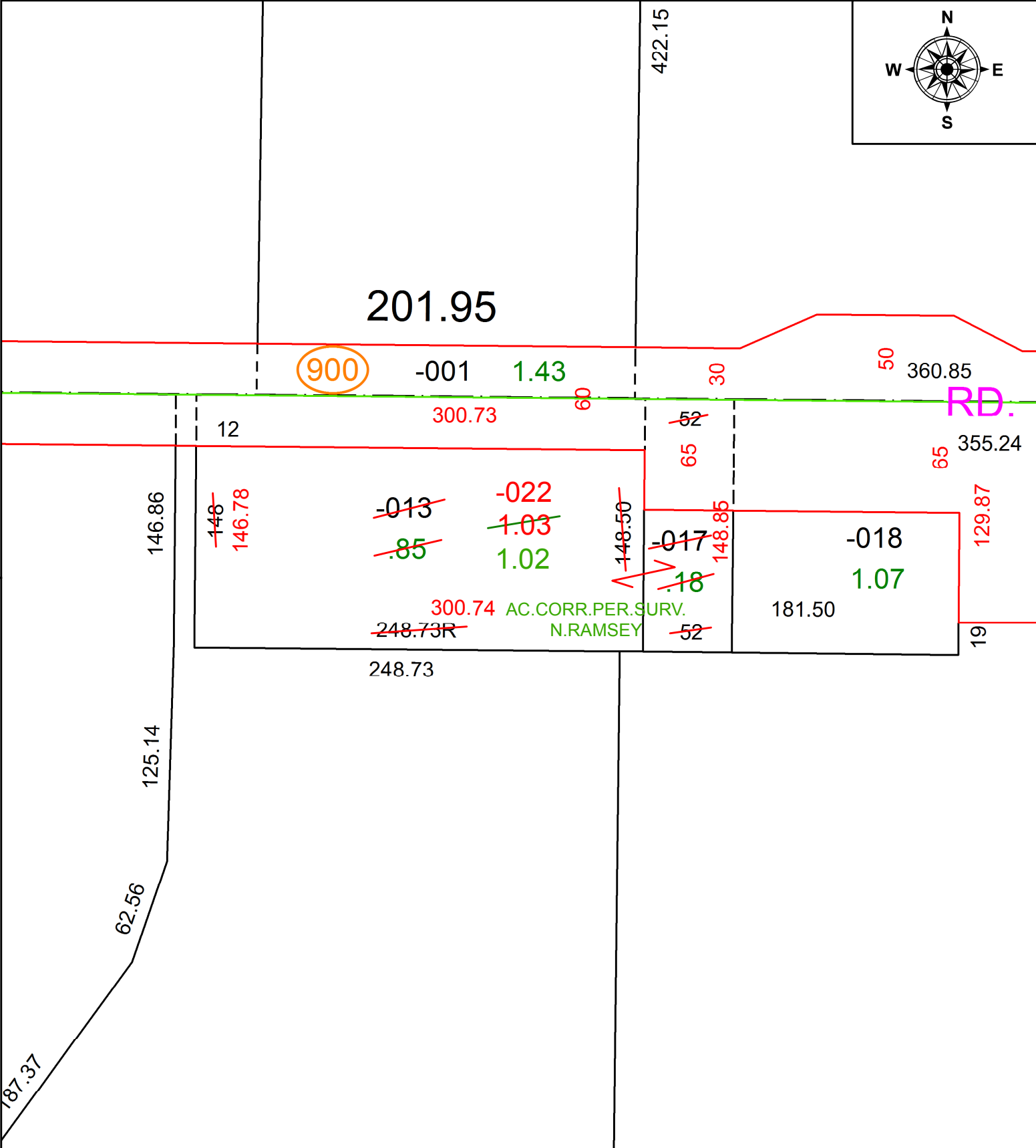
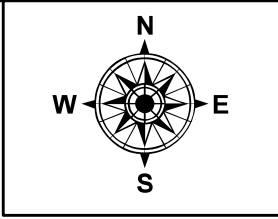


PARENT PARCEL: 16-00-025-101-013, -017

CHILD PARCEL: 16-00-025-101-022

STARTING POINT: INTERSECTION OF C/L OF S.R. 57 AND C/L OF S.R. 83

20-04132



**SPLITS/DEEDS PROCESSED**  
LORAIN COUNTY TAX MAP DEPARTMENT  
226 MIDDLE AVE. ELYRIA, OH

SURVEYED BY: NATHANIEL B. RAMSEY  
CLOSURE: 1:325,569  
MAP PAGE(S): 16-00-025  
APPROVED BY: RRM DATE: 6-1-20  
SCALE: 1" = 75' PRIOR INSTRUMENT: 20190703696