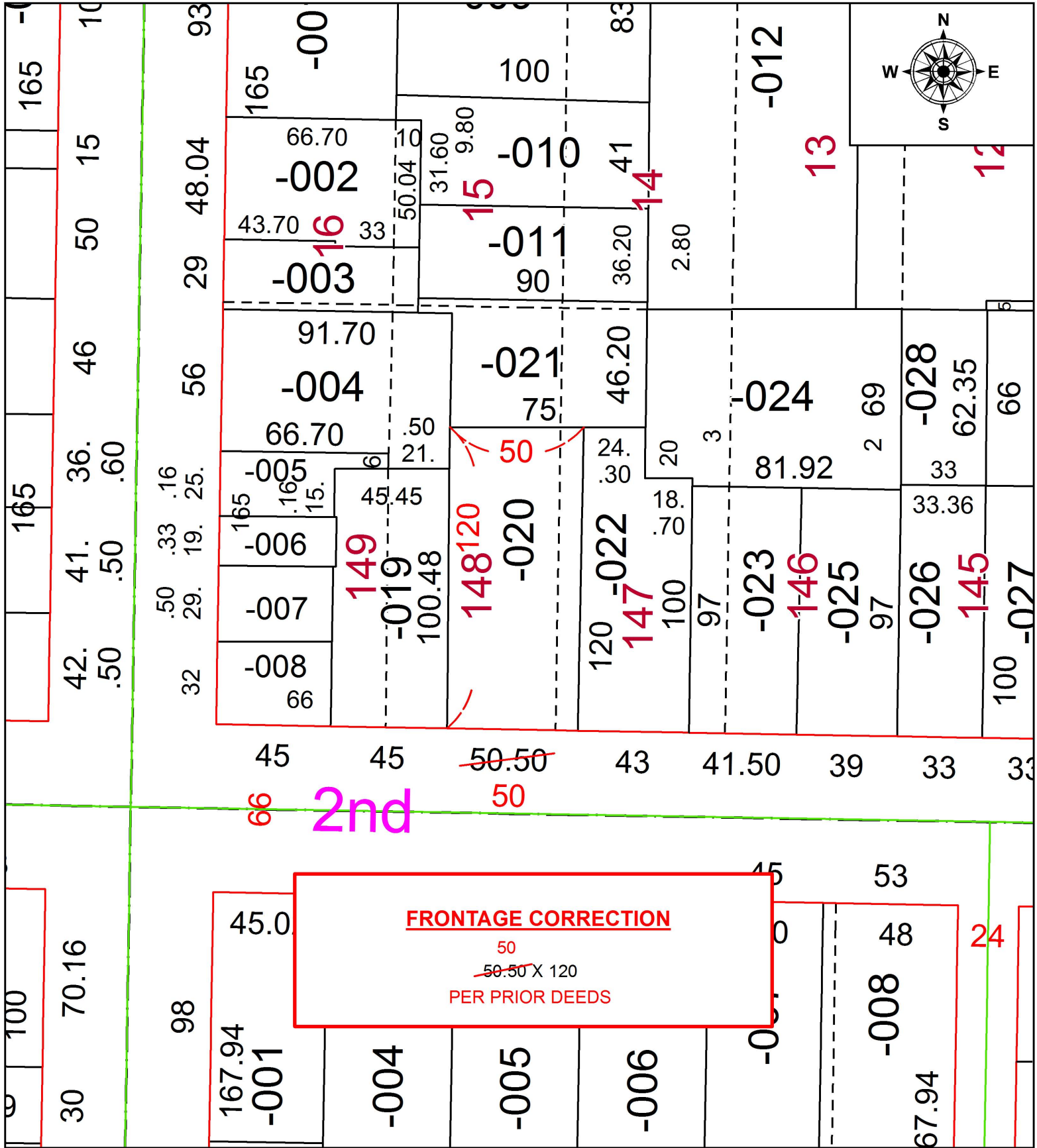


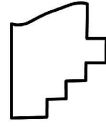
PARENT PARCEL: 06-26-065-000-020

CHILD PARCEL:

STARTING POINT: SOUTHWEST CORNER OF PROPERTY CONVEYED TO HENRY NIX

19-04132-C



 **SPLITS/DEEDS PROCESSED**
 LORAIN COUNTY TAX MAP DEPARTMENT
 226 MIDDLE AVE. ELYRIA, OH

SURVEYED BY: N/A
 CLOSURE: N/A
 MAP PAGE(S): 6-26-065
 APPROVED BY: RRM DATE: 7-15-19
 SCALE: 1" = 50 PRIOR INSTRUMENT: 20080244449