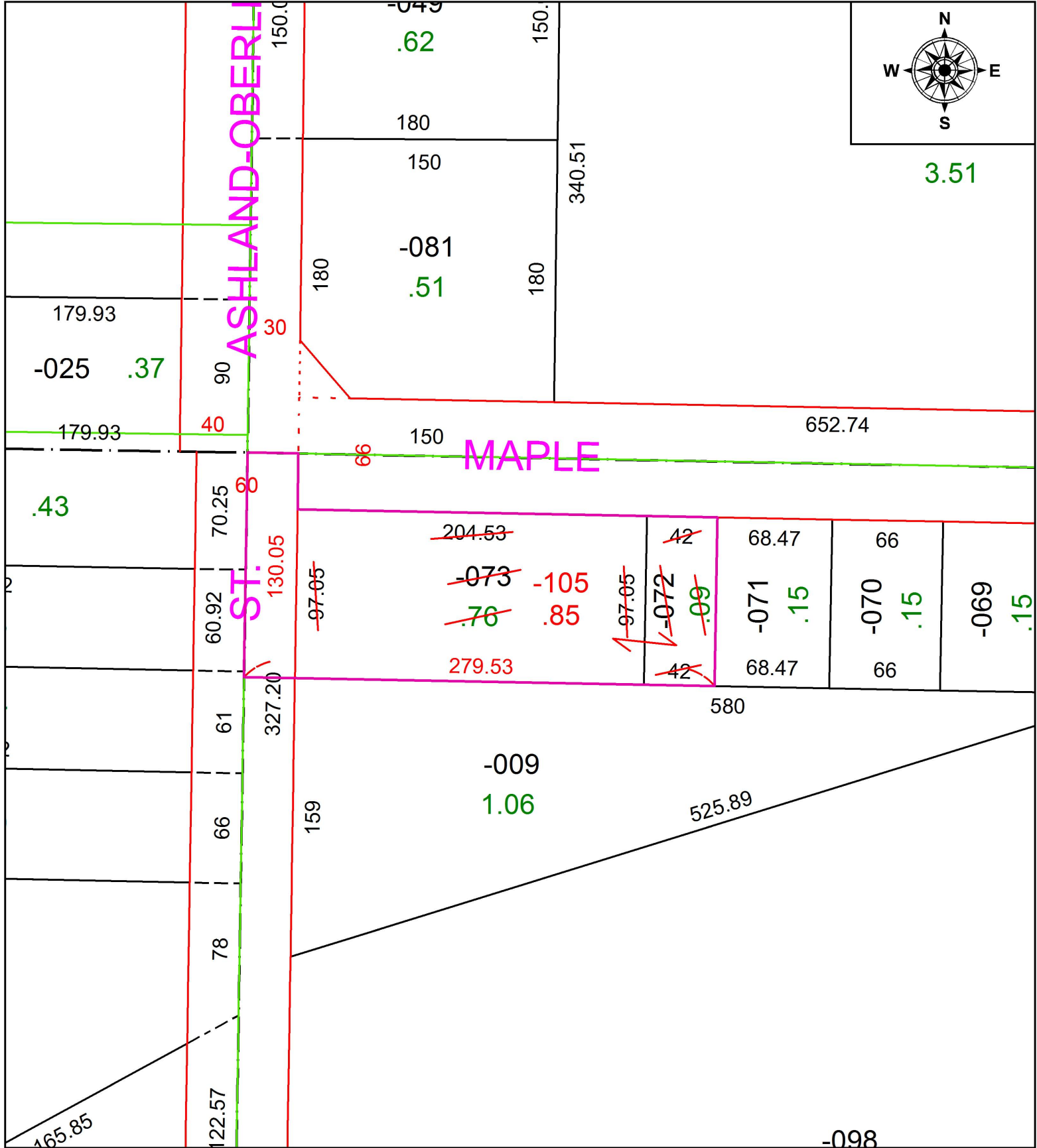


PARENT PARCEL: 18-00-021-101-072, -073

CHILD PARCEL: 18-00-021-101-105

STARTING POINT: NORTHWEST CORNER OF O.L.21

19-04131-C



**SPLITS/DEEDS PROCESSED**  
 LORAIN COUNTY TAX MAP DEPARTMENT  
 226 MIDDLE AVE. ELYRIA, OH

SURVEYED BY: N/A  
 CLOSURE: N/A  
 MAP PAGE(S): 18-00-021  
 APPROVED BY: RRM DATE: 7-3-19  
 SCALE: 1" = 75' PRIOR INSTRUMENT: 20190716868