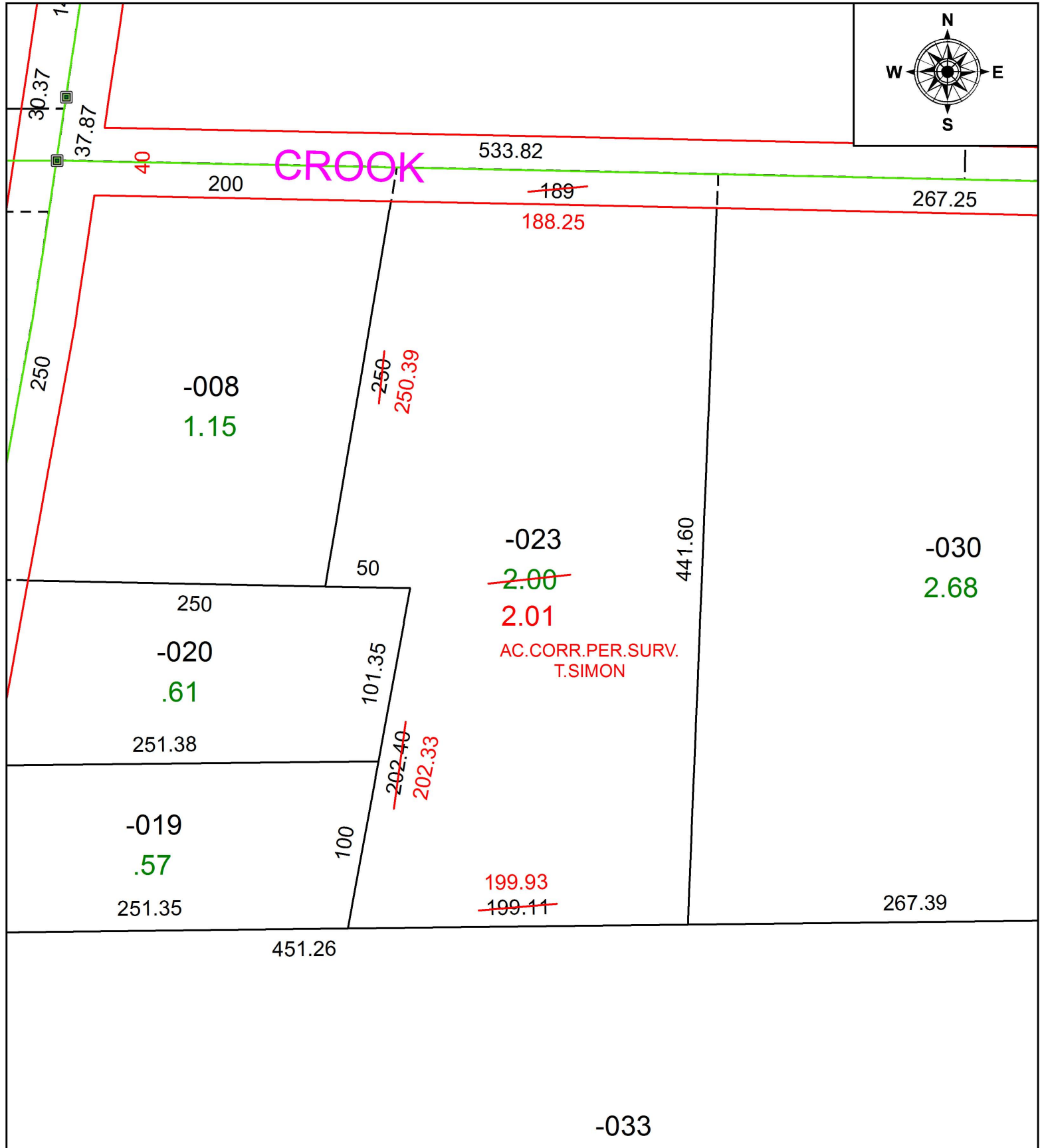
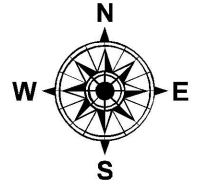


PARENT PARCEL: 15-00-011-000-023

CHILD PARCEL:

STARTING POINT: INTERSECTION OF C/L OF INDIAN HOLLOW RD. AND C/L OF CROOK ST.

19-04129-D



SPLITS/DEEDS PROCESSED
 LORAIN COUNTY TAX MAP DEPARTMENT
 226 MIDDLE AVE. ELYRIA, OH

SURVEYED BY: THOMAS A. SIMON
 CLOSURE: 1:125,838
 MAP PAGE(S): 15-00-011
 APPROVED BY: RRM DATE: 7-1-19
 SCALE: 1" = 75' PRIOR INSTRUMENT: 20190716545