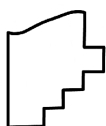
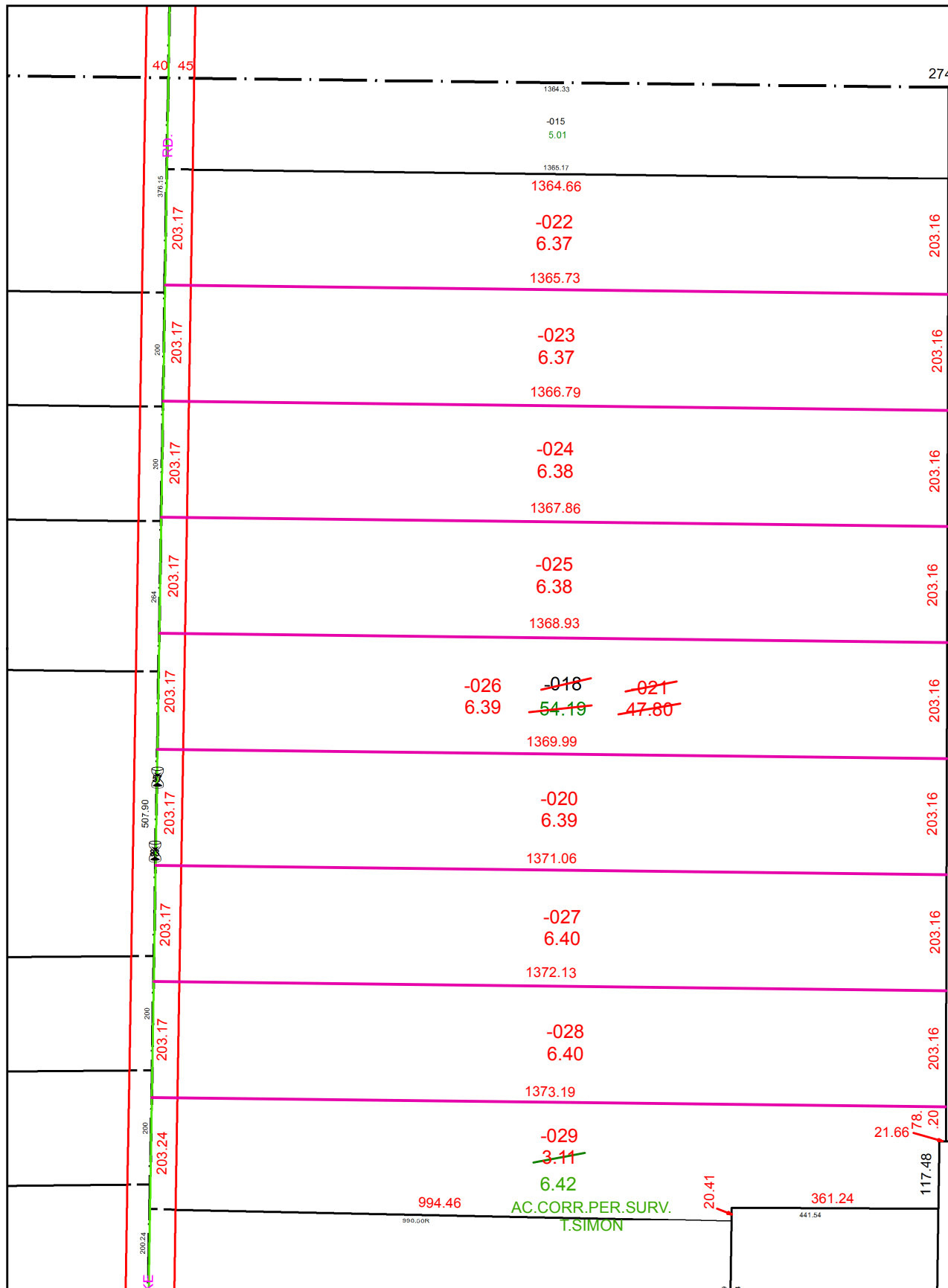
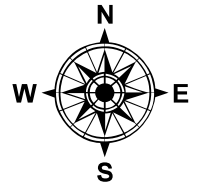


PARENT PARCEL: 16-00-046-000-018

CHILD PARCEL: 16-00-046-000-020 THRU -029

STARTING POINT: INTERSECTION OF C/L OF S.R. 83 AND C/L OF S.R.303

20-04126



**SPLITS/DEEDS PROCESSED**  
 LORAIN COUNTY TAX MAP DEPARTMENT  
 226 MIDDLE AVE. ELYRIA, OH

SURVEYED BY: THOMAS A. SIMON

CLOSURE: 1:543,085

MAP PAGE(S): 16-00-046

APPROVED BY: RRM DATE: 5-22-20

SCALE: 1" = 250 PRIOR INSTRUMENT: 20160586284