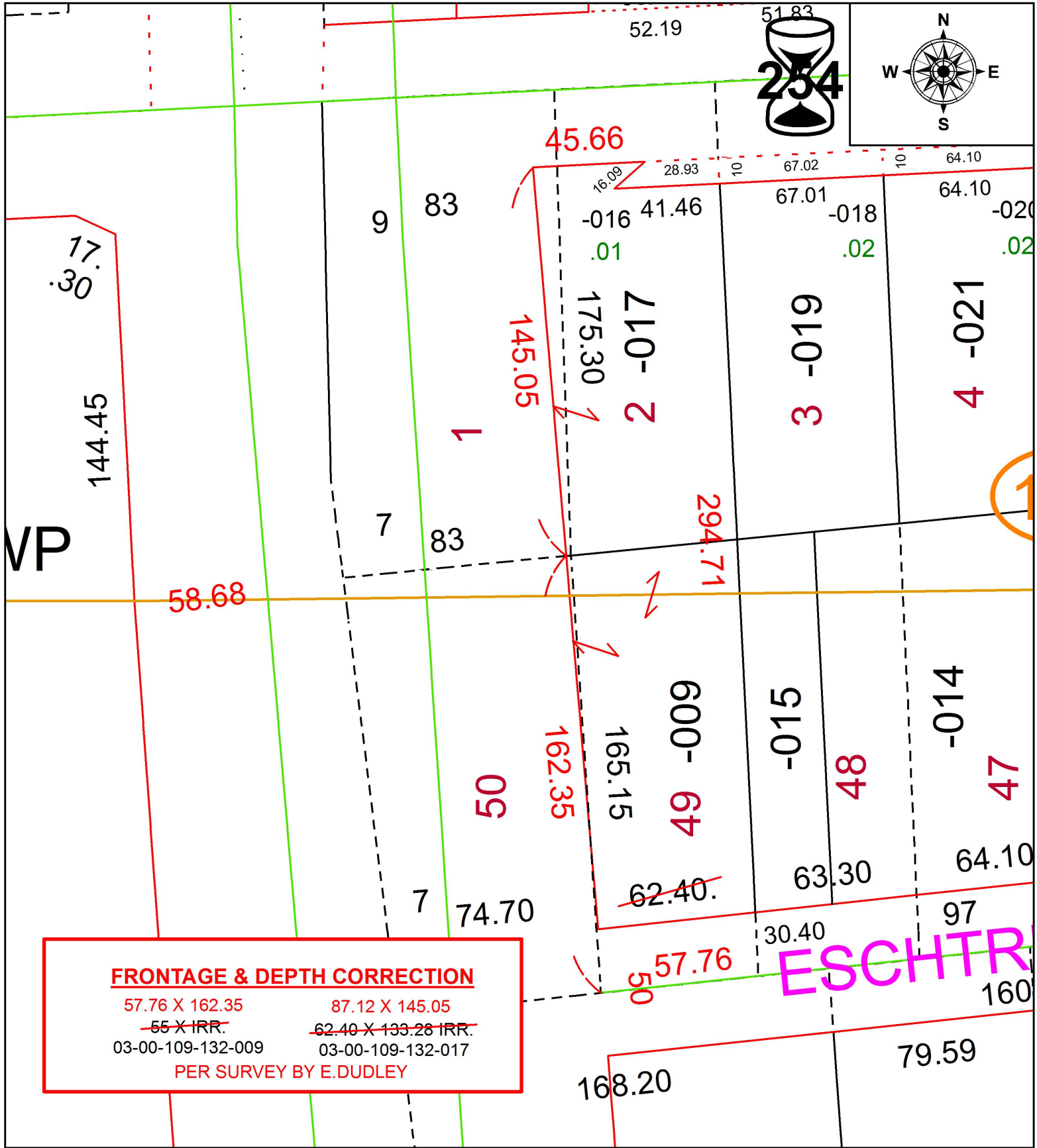


PARENT PARCEL: 03-00-109-132-009, -017

CHILD PARCEL:

STARTING POINT: INTERSECTION OF WEST LINE OF GROVE ST. AND C/L OF S.R. 254

19-04126-D



FRONTAGE & DEPTH CORRECTION

57.76 X 162.35	87.12 X 145.05
55 X IRR.	62.40 X 133.28 IRR.
03-00-109-132-009	03-00-109-132-017
PER SURVEY BY E.DUDLEY	



SPLITS/DEEDS PROCESSED
 LORAIN COUNTY TAX MAP DEPARTMENT
 226 MIDDLE AVE. ELYRIA, OH

SURVEYED BY: EDWARD B. DUDLEY III

CLOSURE: 1:101,514

MAP PAGE(S): 3-00-109

APPROVED BY: RRM DATE: 7-3-19

SCALE: 1" = 50 PRIOR INSTRUMENT: 20170642576